

GROUSE CREEK, UTAH-IDAHO

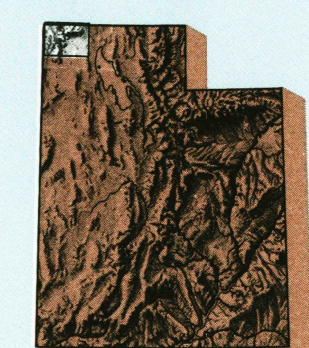
30X60 MINUTE SERIES (TOPOGRAPHIC)



science for a changing world

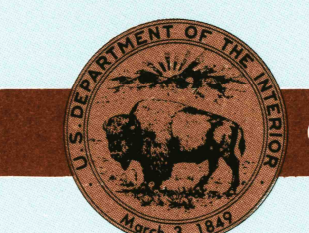
Grouse Creek UTAH-IDAHO

1:100 000-scale metric topographic map



30 X 60 MINUTE QUADRANGLE SHOWING

- Contours and elevations in meters
- Highways, roads and other manmade structures
- Water features
- Woodland areas
- Geographic names



GEOLOGICAL SURVEY

1987

Produced by the United States Geological Survey

Compiled from USGS 1:24 000 and 1:62 500-scale topographic maps dated 1955-1984. Planimetry revised from aerial photographs taken 1984 and other source data. Revised information not field checked. Map edited 1987.

Projection and 10 000-meter grid, zone 12 Universal Transverse Mercator. 25 000-foot grid ticks based on Utah coordinate system, north zone and Idaho coordinate system central zone. 1927 North American Datum. To place on the predicted North American Datum 1983 move the projection lines 12 meters north and 70 meters east. There may be private inholdings within the boundaries of the National or State reservations shown on this map.

CONTOUR INTERVAL 50 METERS
 SUPPLEMENTARY CONTOUR INTERVAL 10 METERS
 NATIONAL GEODETIC VERTICAL DATUM OF 1929
 ELEVATIONS SHOWN TO THE NEAREST METER

THIS MAP COMPLIES WITH NATIONAL MAP ACCURACY STANDARDS

FOR SALE BY U.S. GEOLOGICAL SURVEY,
 P.O. BOX 25286, DENVER, COLORADO, 80225

CONVERSION TABLE		DECLINATION DIAGRAM		ADJOINING MAPS		
Meters	Feet	30 Miles		1	2	3
1	3.2808	150°		1	2	3
2	6.5617	151°		4	5	
3	9.8425	152°		6	7	8
4	13.1234	153°				
5	16.4043	154°				
6	19.6852	155°				
7	22.9660	156°				
8	26.2469	157°				
9	29.5278	158°				
10	32.8084	159°				

To convert meters to feet multiply by 3.2808
 To convert feet to meters multiply by 0.3048

UTM grid convergence (GM) and 1983 magnetic declination (MD) at center of map. Diagram is approximate.



RECEIVED
 MAY 3 0 2002

HISTORICAL MAP ARCHIVES

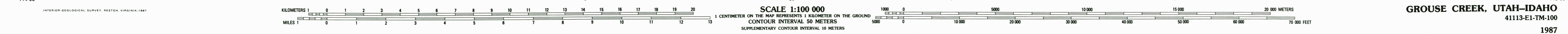
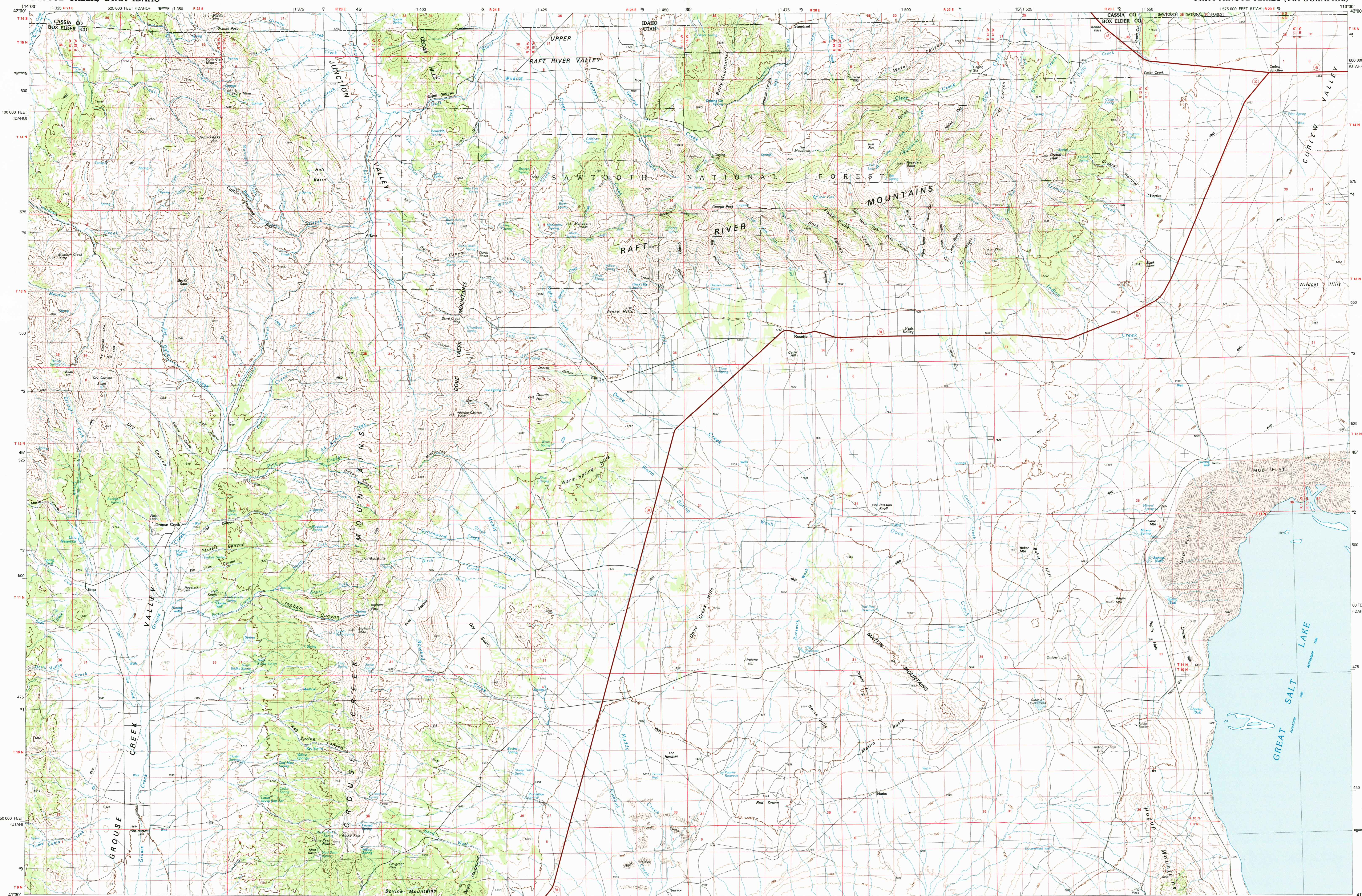
Topographic Map Symbols

- Primary highway, hard surface
- Secondary highway, hard surface
- Light duty road, principal street, hard or improved surface
- Other road or street; trail
- Route marker: Interstate; U. S.; State
- Railroad: standard gauge; narrow gauge
- Bridge: overpass; underpass
- Tunnel: road, railroad
- Built up area, locality, elevation
- Airport: landing field; landing strip
- National boundary
- State boundary
- County boundary
- National or State reservation boundary
- Land grant boundary
- U. S. public lands survey: range, township; section
- Range, township; section line: protracted
- Power transmission line; pipeline
- Dam: dam with lock
- Cemetery: building
- Windmill; water well; spring
- Mine shaft; adit or cave; mine, quarry; gravel pit
- Campground; picnic area; U. S. location monument
- Rail: golf swelling
- Disturbed surface: strip mine, lava; sand
- Contours: index; intermediate; supplementary
- Bathymetric contours: index; intermediate
- Stream, lake; perennial; intermittent
- Roads, large and small; bays, large and small
- Area to be submerged; marsh, swamp
- Land subject to controlled inundation; woodland
- Scrub; mangrove
- Orchard; vineyard

A pamphlet describing topographic maps is available on request



TOTAL RECYCLED FIBER



SCALE 1:100 000. 1 CENTIMETER ON THE MAP REPRESENTS 1 KILOMETER ON THE GROUND. CONTOUR INTERVAL 50 METERS. SUPPLEMENTARY CONTOUR INTERVAL 10 METERS.

GROUSE CREEK, UTAH-IDAHO

4113-E1-TM-100

1987