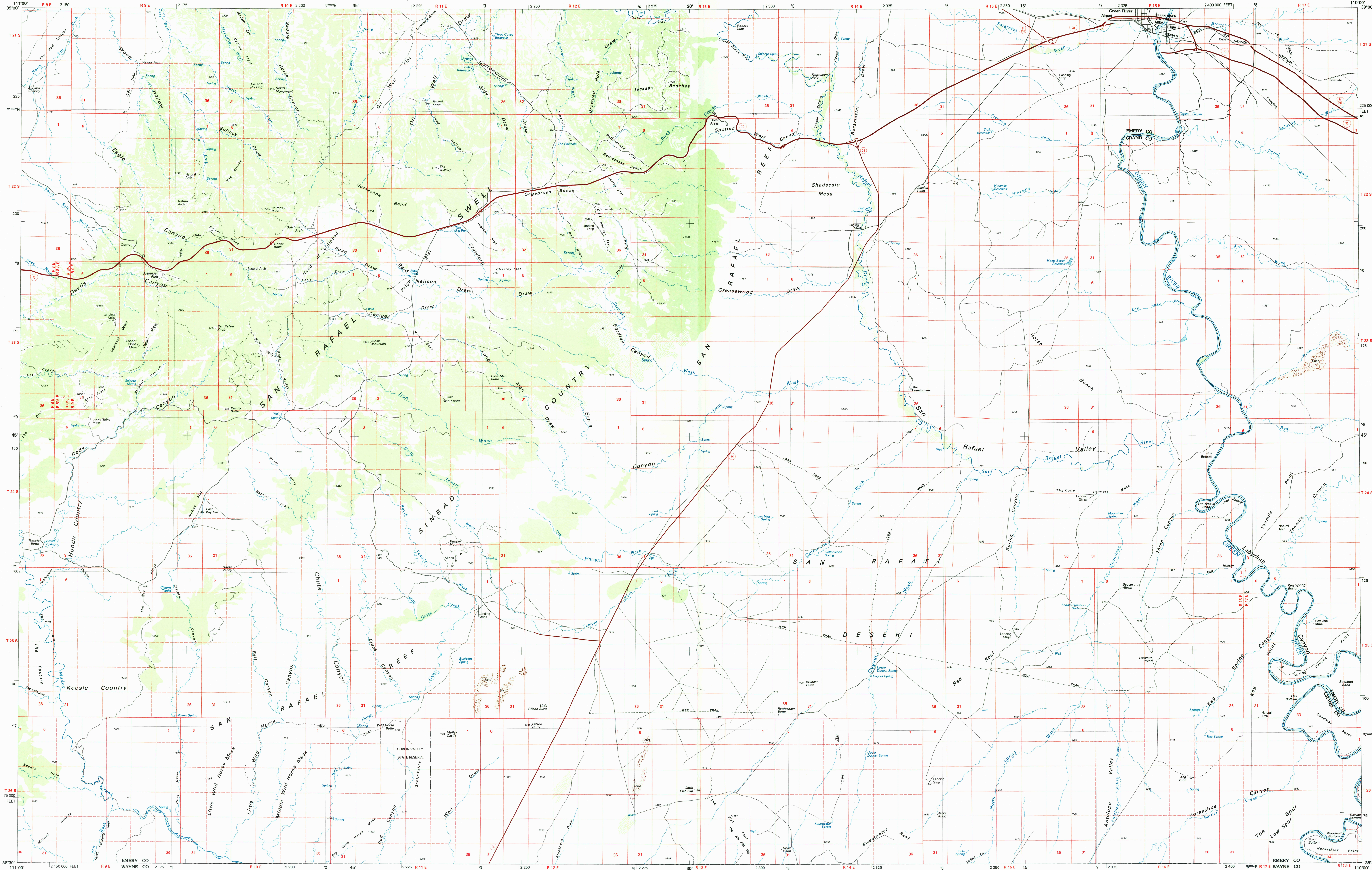


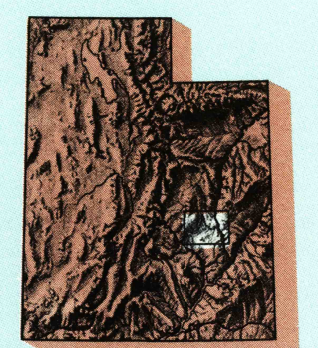
SAN RAFAEL DESERT, UTAH

30 X 60 MINUTE SERIES (PLANIMETRIC)



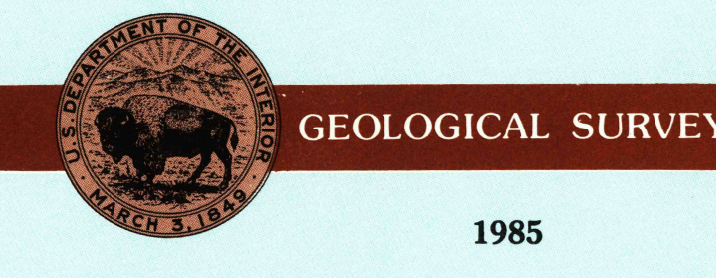
San Rafael Desert UTAH

1:100 000-scale planimetric map



30 X 60 MINUTE QUADRANGLE SHOWING

- Elevations in meters
- Highways, roads and other manmade structures
- Water features
- Woodland areas
- Geographic names



Produced by the United States Geological Survey
 Compiled from USGS 1:250 000 and 1:62 500-scale topographic maps dated 1952-1983. Partially revised from aerial photographs taken 1981 and other source data. Revised information not field checked. Map edited 1985.

Projection and 10 000-meter grid, zone 12
 Universal Transverse Mercator
 25 000-foot grid ticks based on Utah coordinate system, central zone, 1927 North American Datum
 To place on the predicted North American Datum 1983 move the projection lines 6 meters north and 62 meters east
 There may be private inholdings within the boundaries of the National or State reservations shown on this map.

NATIONAL GEODETIC VERTICAL DATUM OF 1929
THIS MAP COMPLIES WITH NATIONAL MAP ACCURACY STANDARDS

CONVERSION TABLE		DECLINATION DIAGRAM		ADJOINING MAPS	
Meters	Feet	1	2	3	4
2	6.5617	1	2	3	4
4	13.1234	5	6	7	8
6	19.6851				
8	26.2468				
10	32.8085				

To convert meters to feet multiply by 3.2808
 To convert feet to meters multiply by 0.3048

UTM grid convergence (GM) and 1983 magnetic declination (DM) at center of map. Diagram is approximate.

FOR SALE BY U.S. GEOLOGICAL SURVEY, DENVER, COLORADO 80225 OR RESTON, VIRGINIA 22092

RETURN TO U.S. GEOLOGICAL SURVEY HISTORICAL MAP ARCHIVES

Topographic Map Symbols

- Primary highway, hard surface
- Secondary highway, hard surface
- Light duty road, principal street, hard or improved surface
- Other road or street; trail
- Route marker: interstate; U. S. State
- Railroad: standard gage; narrow gage
- Bridge: overpass; underpass
- Tunnel: road; railroad
- Built up area; locality; elevation
- Airport: landing field; landing strip
- National boundary
- State boundary
- County boundary
- National or State reservation boundary
- Land grant boundary
- U. S. public lands survey: range, township; section
- Range, township; section line: protracted
- Power transmission line; pipeline
- Dam: dam with foot
- Cemetery: building
- Windmill; water well; spring
- Mine shaft: adit or cave; mine, quarry; gravel pit
- Campground; picnic area; U. S. location monument
- Distoral surface: strip mine; leve; sand
- Contours: index; intermediate; supplementary
- Bathymetric contours: index; intermediate
- Stream, lake: perennial; intermittent
- Rapid; large and small; falls, large and small
- Area to be submerged; marsh; swamp
- Land subject to controlled inundation; wooded
- Scrub; mangrove
- Orchard; vineyard



SAN RAFAEL DESERT, UTAH 38110-EI-PL-100 1985