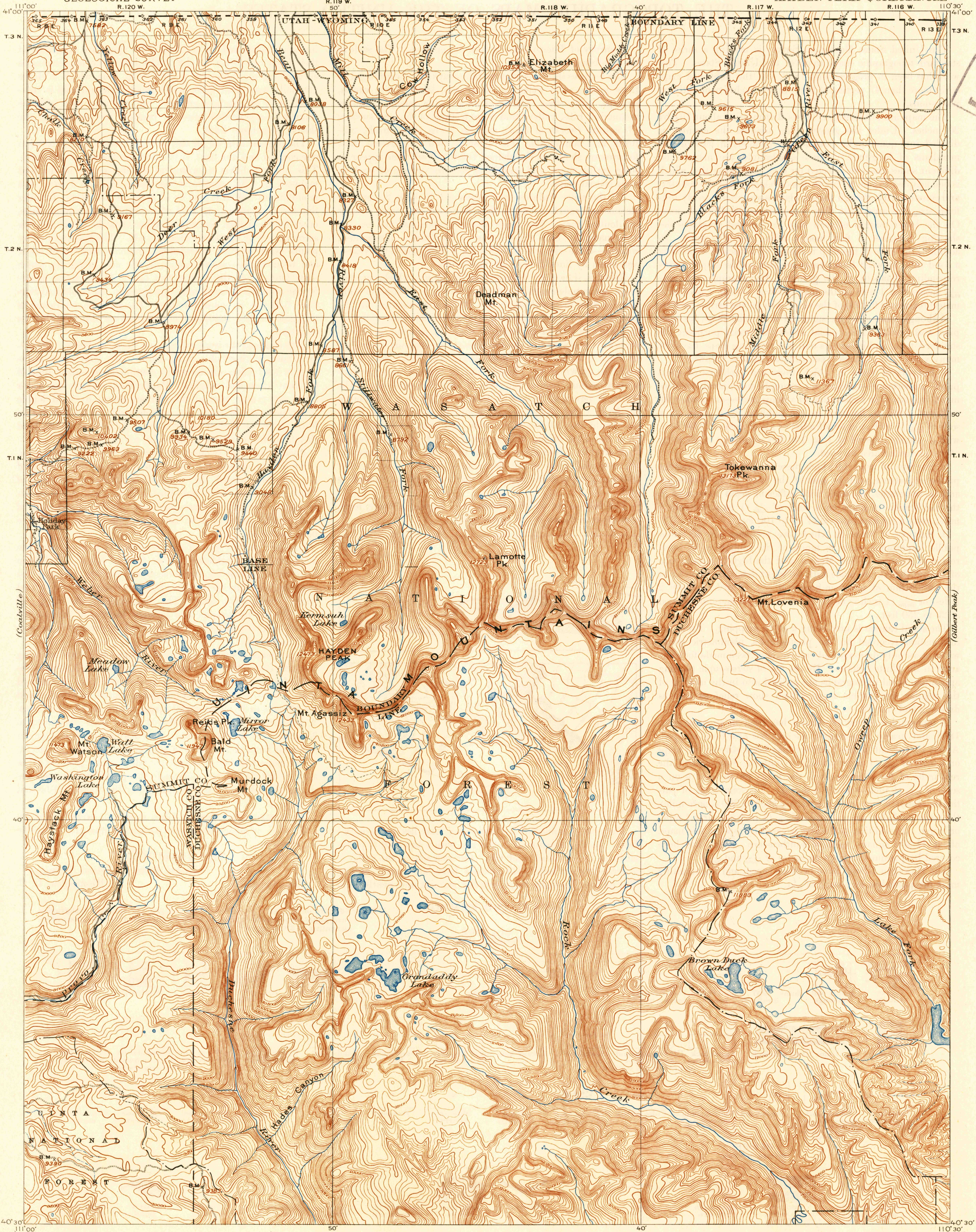
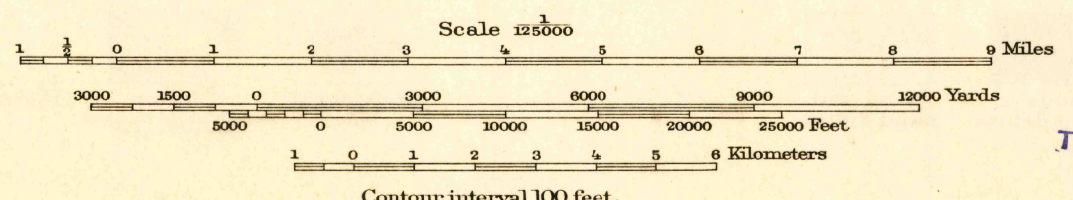


U.S.G.S.
FILE COPY
Inspection and Editing



E. M. Douglas, Geographer in charge.
Triangulation by H. L. Baldwin, Jr.
Topography by W. J. Lloyd and Jeremiah Ahern.
Surveyed in 1900-1901.



Edition of 1903, reprinted 1946
Polyconic projection

USGS
Historical File
Topographic Division

HAYDEN PEAK, UTAH-WYO
N 4030-W 11030/30

U.S.G.S.
FILE COPY
Inspection and Editing