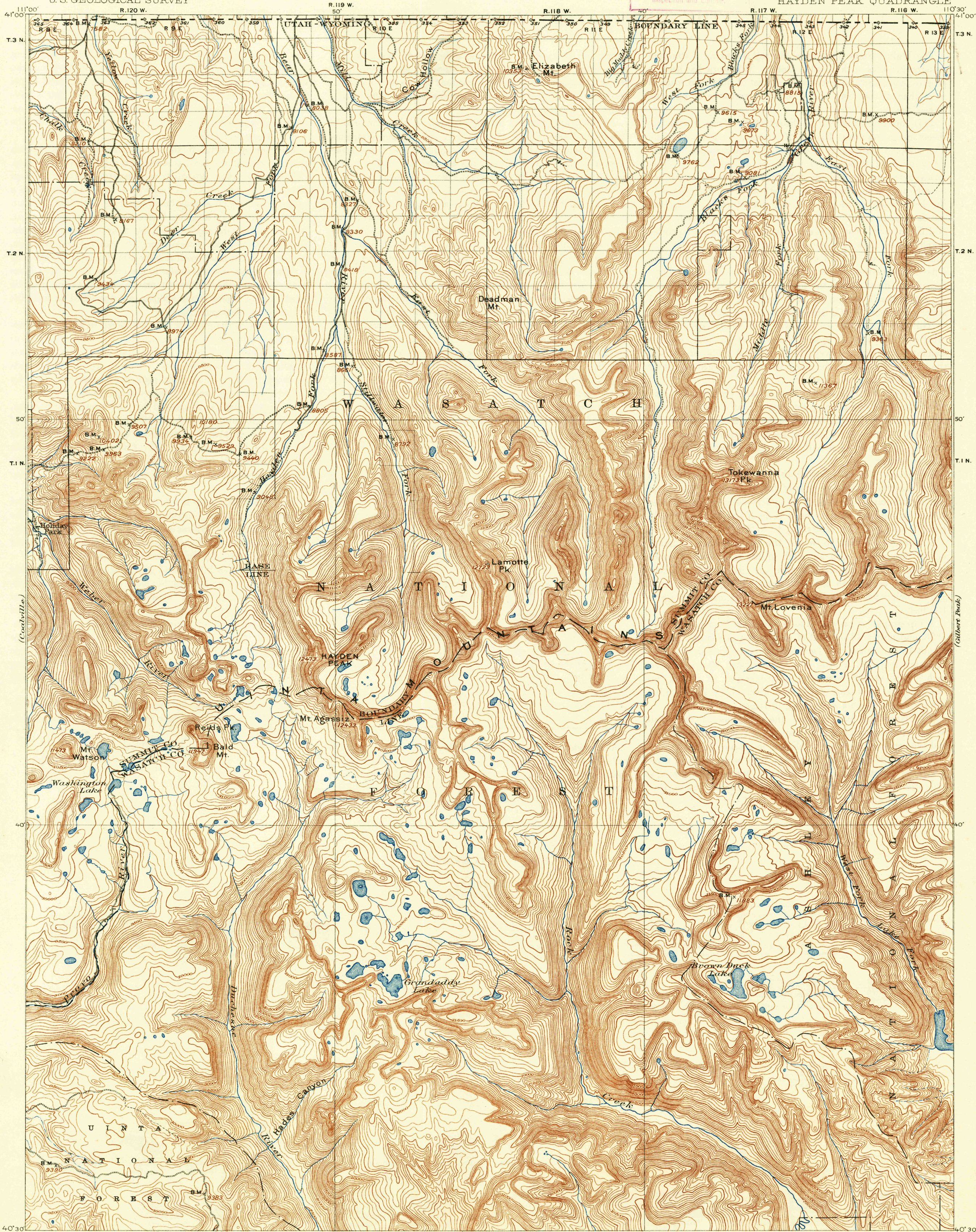
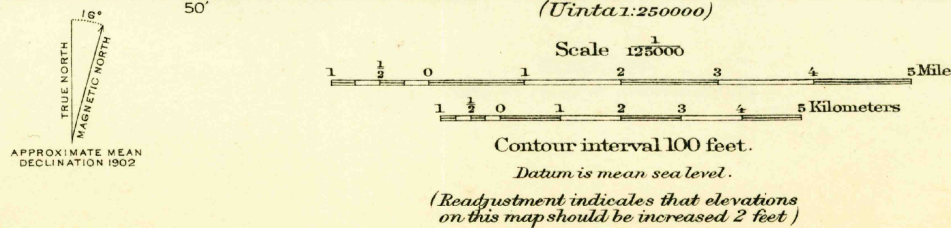


U. S. G. S.
FILE COPY
Inspection and Control



ENGRAVED JUNE 1903 BY U.S.G.S.
E. M. Douglas, Geographer in charge.
Triangulation by H. L. Baldwin, Jr.
Topography by W. J. Lloyd and Jeremiah Ahern.
Surveyed in 1900-1901.



USGS
Historical File
Topographic Division

Edition of 1903, reprinted 1933.
Polyconic projection

HAYDEN PEAK, UTAH-WYO.

DEC 1 - 1933 (1925)

1925