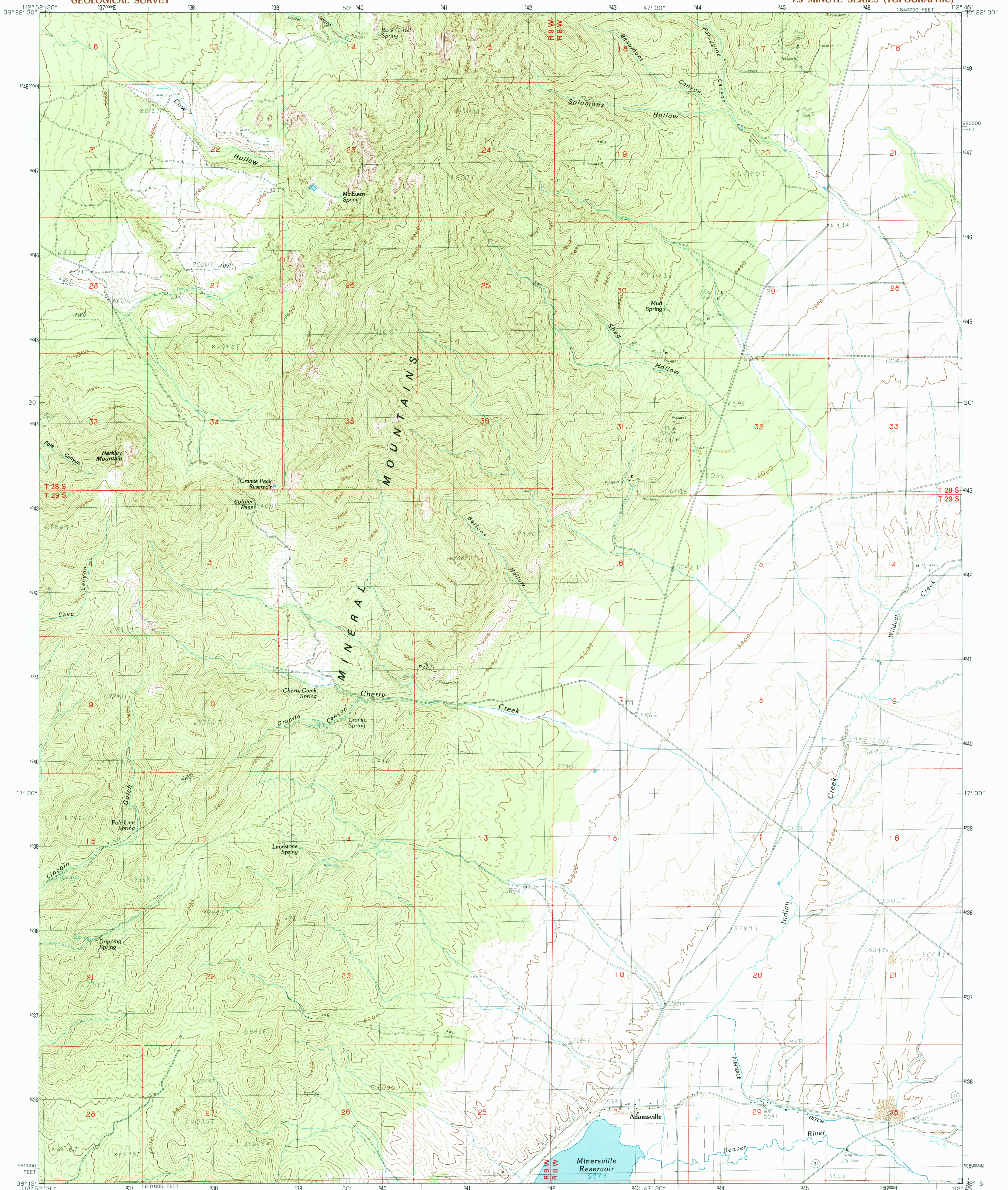


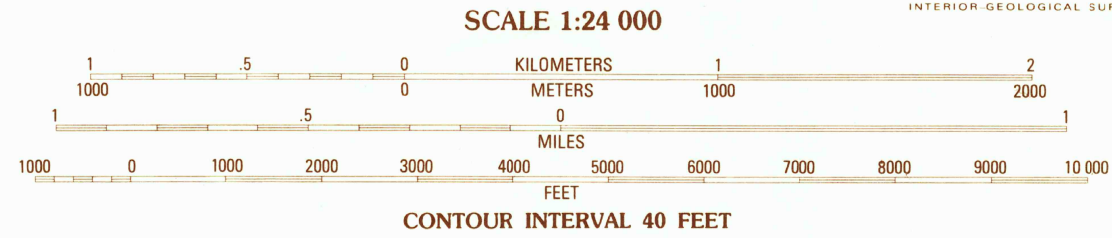
UNITED STATES
DEPARTMENT OF THE INTERIOR
GEOLOGICAL SURVEY

ADAMSVILLE QUADRANGLE
UTAH-BEAVER CO.
7.5 MINUTE SERIES (TOPOGRAPHIC)



PRODUCED BY THE UNITED STATES GEOLOGICAL SURVEY
CONTROL BY USGS, NOS/NOAA
COMPILED FROM AERIAL PHOTOGRAPHS TAKEN 1951 AND 1955
PLANETABLE SURVEYS 1953 AND 1958
LIMITED REVISION FROM AERIAL PHOTOGRAPHS TAKEN 1963
FIELD CHECKED 1984. MAP EDITED 1986
PROJECTION LAMBERT CONFORMAL CONIC
GRID: 1000-METER UNIVERSAL TRANSVERSE MERCATOR - ZONE 12
10,000-FOOT STATE GRID TICS UTAH, SOUTH ZONE
UTM GRID DECLINATION 1° 07' WEST
1986 MAGNETIC NORTH DECLINATION 14° EAST
VERTICAL DATUM NATIONAL GEODETIC VERTICAL DATUM OF 1929
HORIZONTAL DATUM 1927 NORTH AMERICAN DATUM
To place on the predicted North American Datum of 1983,
move the projection lines as shown by dashed corner ticks
(7 meters north and 68 meters east)
There may be private inholdings within the boundaries of any
Federal and State Reservations shown on this map
Public land survey system is shown as published in 1958 and
verified or supplemented in 1984

PROVISIONAL MAP
Produced from original
manuscript drawings. Infor-
mation shown as of date of
field check.



To convert meters to feet multiply by 3.2808
To convert feet to meters multiply by .3048

THIS MAP COMPLIES WITH NATIONAL MAP ACCURACY STANDARDS
FOR SALE BY U.S. GEOLOGICAL SURVEY, DENVER, COLORADO 80225
OR RESTON, VIRGINIA 22092



QUADRANGLE LOCATION

1	2	3	1	Ranch Canyon
2	3	4	2	Bearskin Mountain
3	4	5	3	Gillies Hill
4	5	6	4	Cave Canyon
5	6	7	5	Beaver
6	7	8	6	Minersville
			7	Minersville Reservoir
			8	Greenville Bench

ADJOINING 7.5' QUADRANGLE NAMES

ROAD LEGEND

Improved Road
Unimproved Road
Trail
Interstate Route
U.S. Route
State Route

ADAMSVILLE, UTAH

PROVISIONAL EDITION 1986

38112-C7-TF-024

