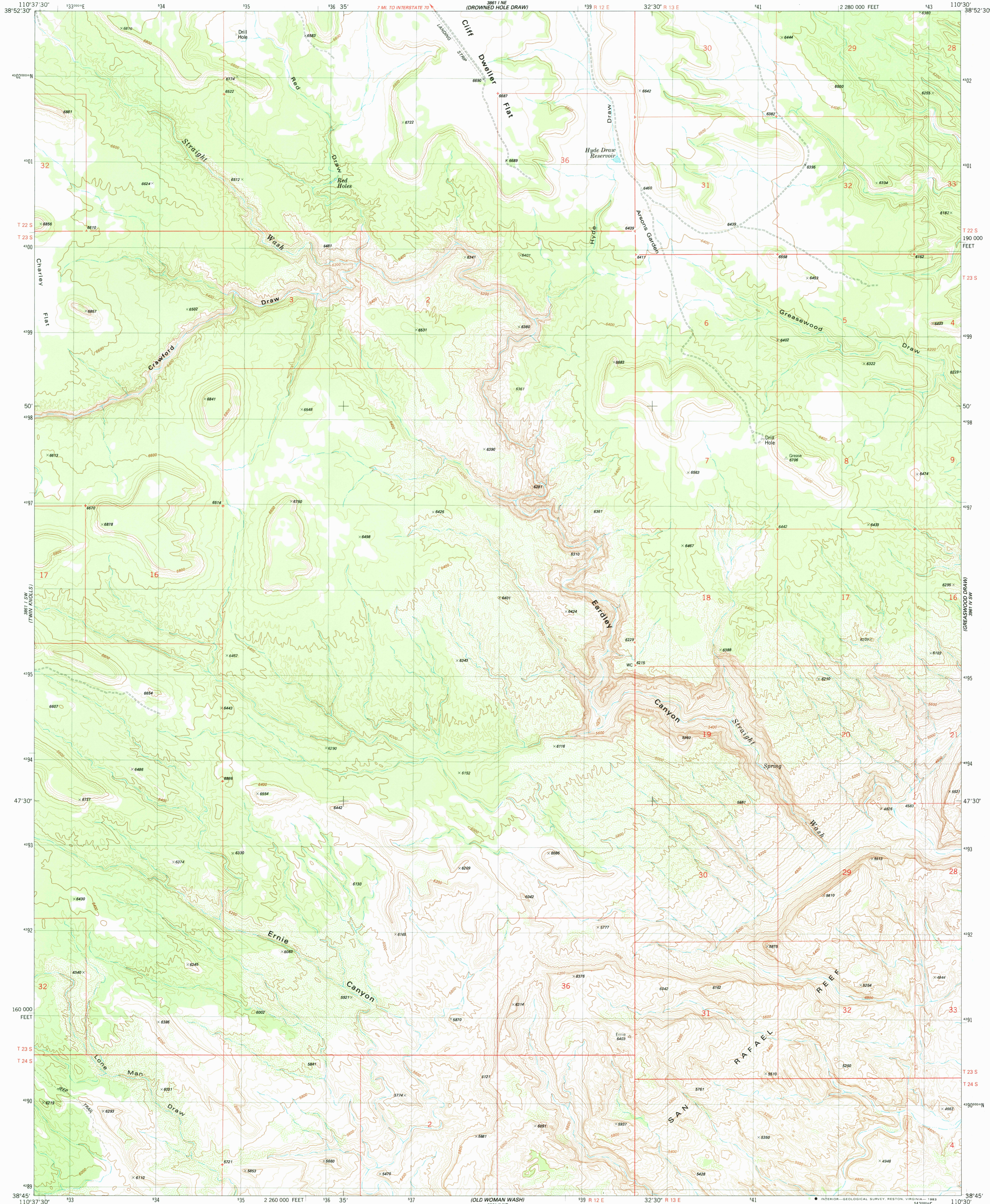
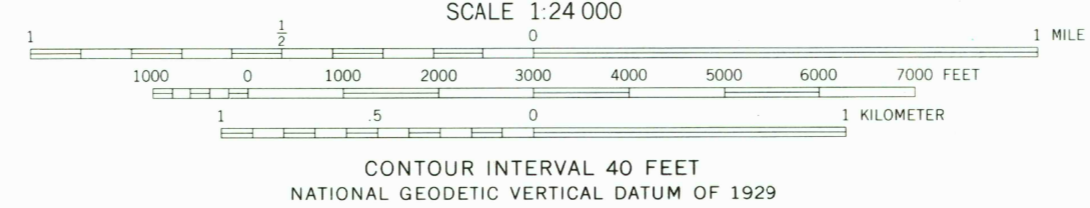
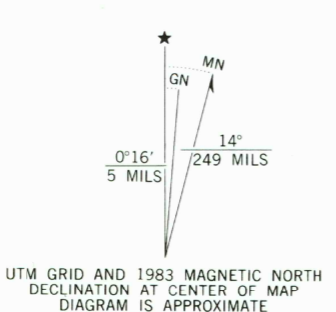


UNITED STATES  
DEPARTMENT OF THE INTERIOR  
GEOLOGICAL SURVEY

ARSONS GARDEN QUADRANGLE  
UTAH-EMERY CO.  
7.5 MINUTE SERIES (TOPOGRAPHIC)  
SE4 THE WICKIUP 15' QUADRANGLE



Mapped, edited, and published by the Geological Survey  
Control by USGS and NOS/NOAA  
Topography by photogrammetric methods from aerial photographs  
taken 1974. Field checked 1976. Map edited 1983  
Projection and 10,000-foot grid ticks: Utah  
coordinate system, central zone (Lambert conformal conic)  
1000-meter Universal Transverse Mercator grid, zone 12  
1927 North American datum  
To place on the predicted North American Datum 1983  
move the projection lines 6 meters north and  
62 meters east as shown by dashed corner ticks  
Fine red dashed lines indicate selected fence lines  
Where omitted, land lines have not been established



ROAD CLASSIFICATION

Primary highway, hard surface	Light-duty road, hard or improved surface
Secondary highway, hard surface	Unimproved road
Interstate Route	U. S. Route
	State Route

THIS MAP COMPLIES WITH NATIONAL MAP ACCURACY STANDARDS  
FOR SALE BY U. S. GEOLOGICAL SURVEY, DENVER, COLORADO 80225, OR RESTON, VIRGINIA 22092  
A FOLDER DESCRIBING TOPOGRAPHIC MAPS AND SYMBOLS IS AVAILABLE ON REQUEST

ARSONS GARDEN, UTAH  
SE4 THE WICKIUP 15' QUADRANGLE  
N3845-W11030/7.5  
1983  
DMA 3861 1 SE-SERIES V 897

RETURN TO:  
USGS RMD HISTORICAL MAP ARCHIVES

4/23/84