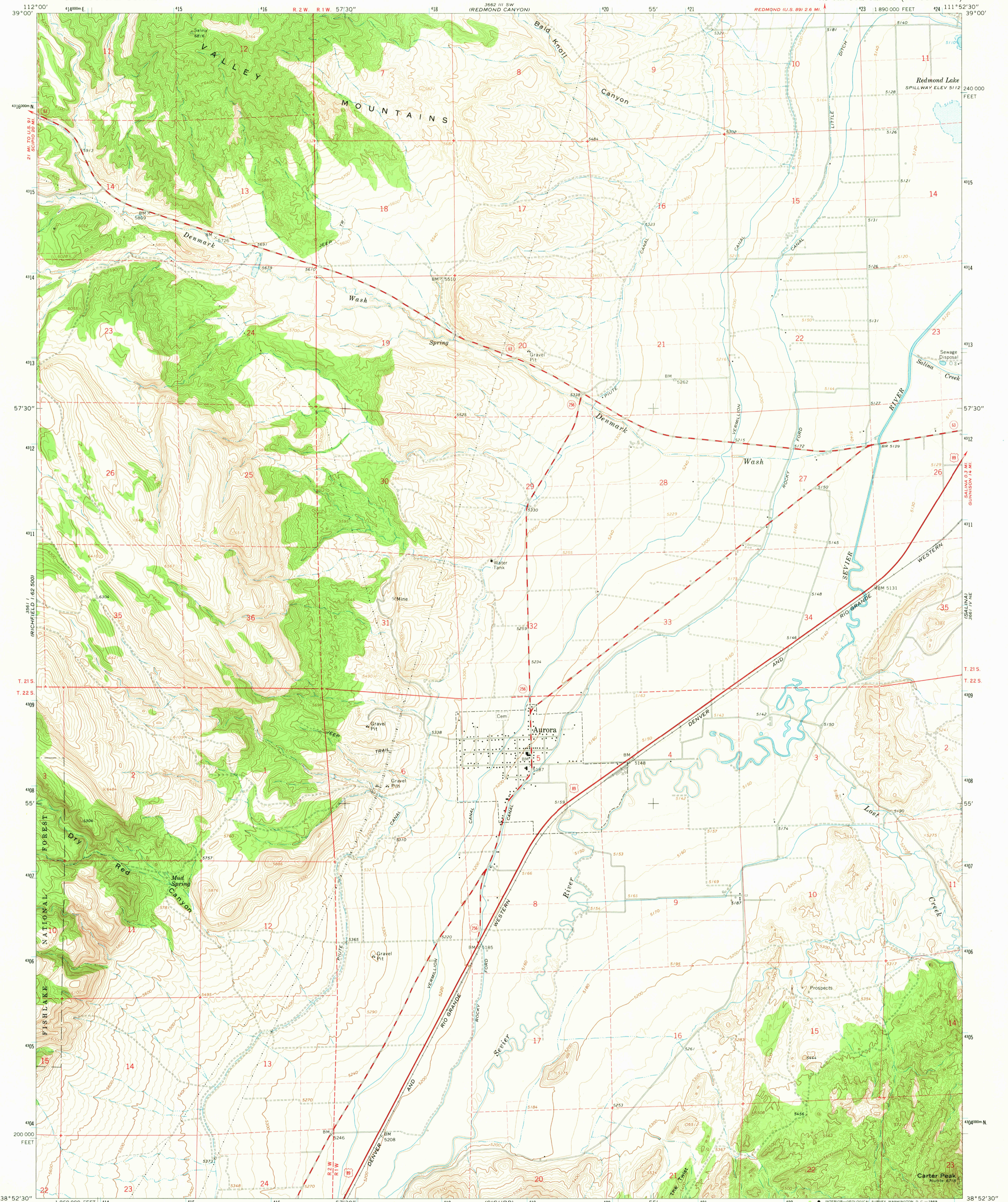
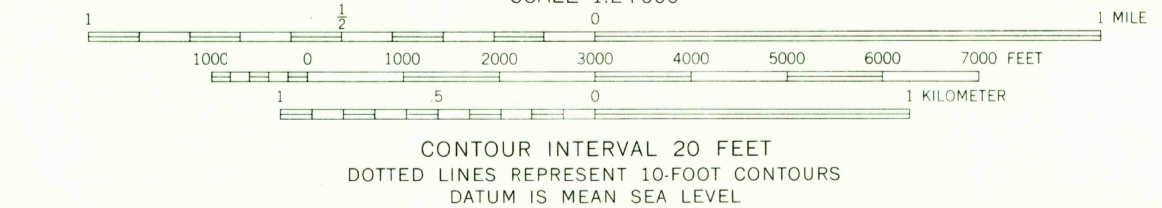
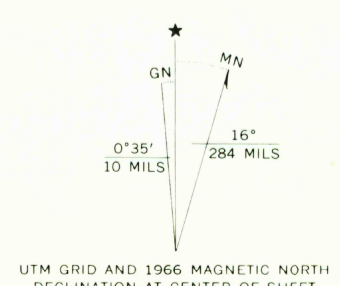


38° 52' 30" N
111° 52' 30" W
REDMOND



Mapped, edited, and published by the Geological Survey
Control by USGS and USC&GS
Topography by photogrammetric methods from aerial
photographs taken 1963. Field checked 1966
Polyconic projection. 1927 North American datum
10,000-foot grid based on Utah coordinate system, central zone
1000-meter Universal Transverse Mercator grid ticks,
zone 12, shown in blue
Fine red dashed lines indicate selected fence lines
Certain land lines are omitted because of insufficient data
Areas covered by dashed light-blue pattern are subject
to controlled inundation



USGS
HISTORICAL FILE
TOPOGRAPHIC DIVISION



ROAD CLASSIFICATION

Heavy-duty	Light-duty
Medium-duty	Unimproved dirt
U.S. Route	State Route

U.S.G.S.
FILE COPY
TOPOGRAPHIC DIVISION

AURORA, UTAH
N3852.5—W11152.5/7.5
1966

2700
OCT 6 1966

AMS 3661 IV NW—SERIES V897