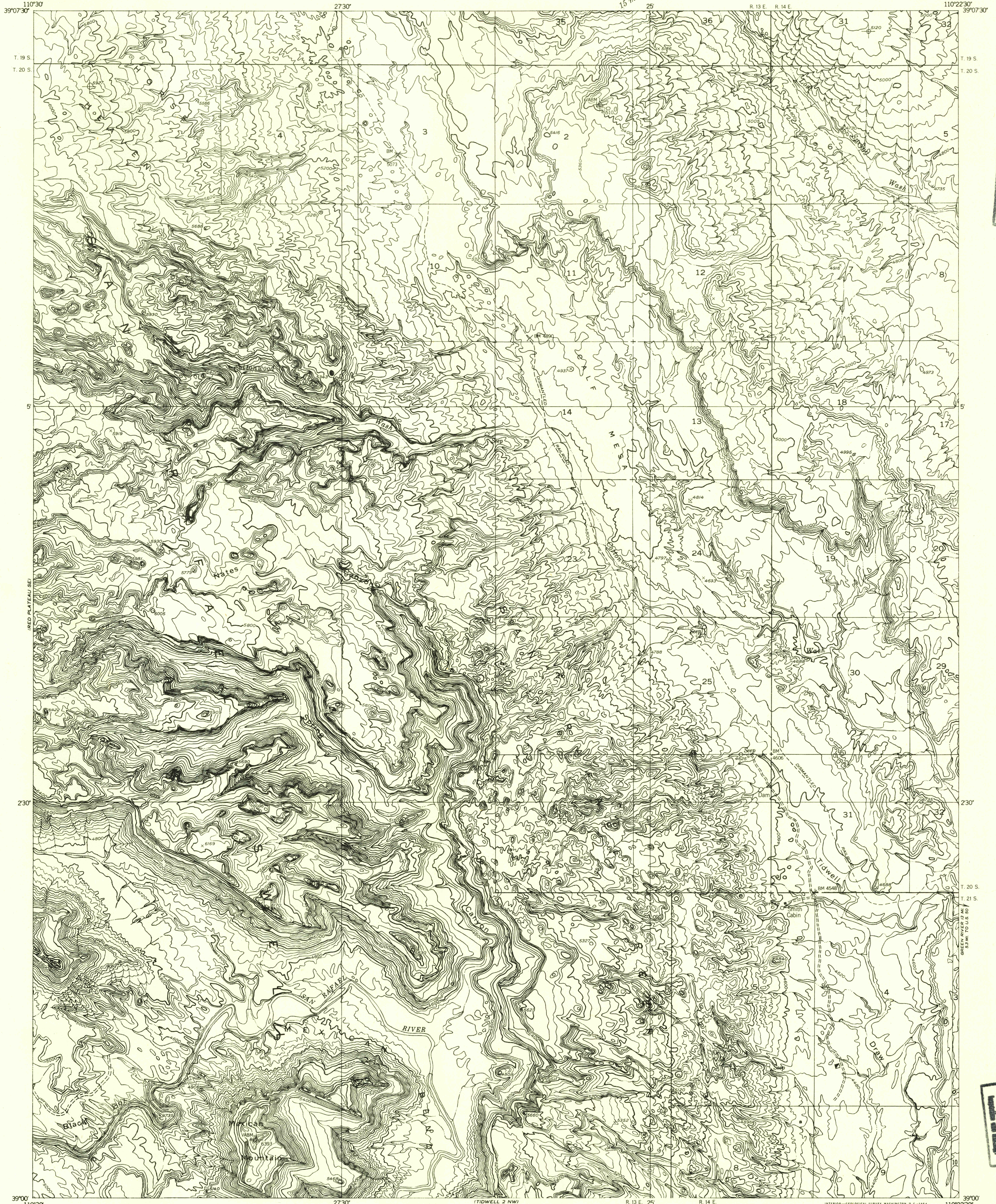


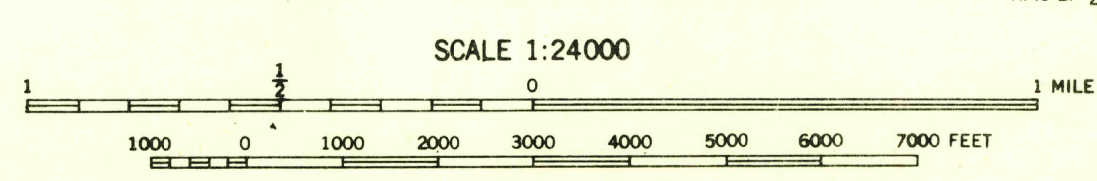
Preliminary edition
Pending completion of 1:62,500 scale
15 minute maps covering this area.



FILE COPY

FILE COPY

Mapped by the Geological Survey 1953
Topography by multiplex methods from
aerial photographs taken 1952



CONTOUR INTERVAL 40 FEET
DATUM IS MEAN SEA LEVEL

USGS
HISTORICAL FILE
TOPOGRAPHIC DIVISION

ROAD CLASSIFICATION
Improved ——— Unimproved - - - - -

BECKWITH PEAK SW, UTAH
N3900—W1022.5/7.5

16°
TRUE NORTH
MAGNETIC NORTH
APPROXIMATE MEAN
DECLINATION, 1953

MAY 5 1954