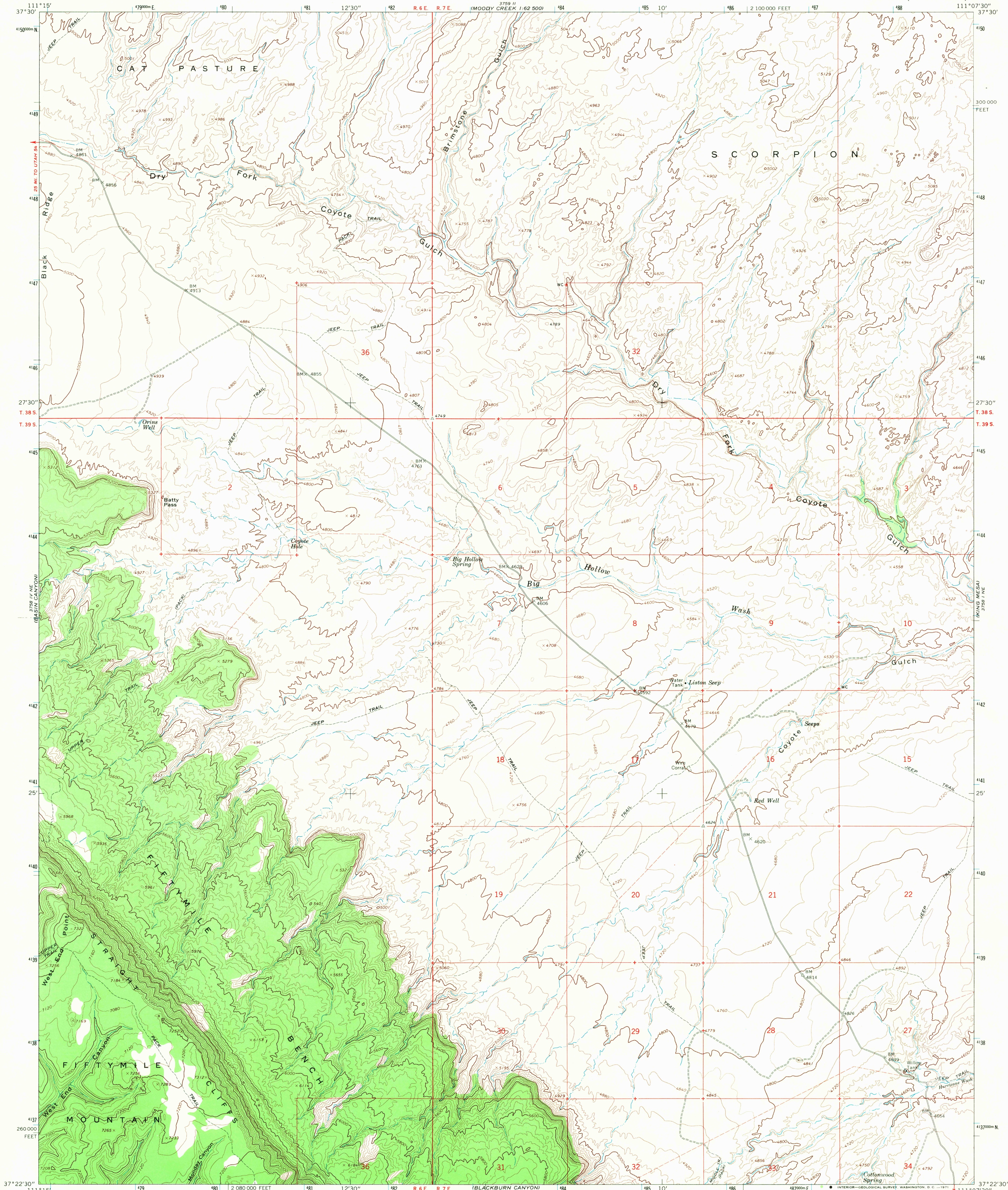


37°22'30" N
111°15' W
SUNSET FLAT

UNITED STATES
DEPARTMENT OF THE INTERIOR
GEOLOGICAL SURVEY

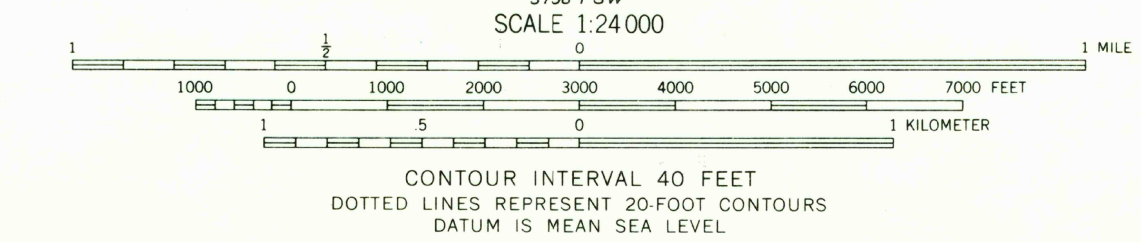
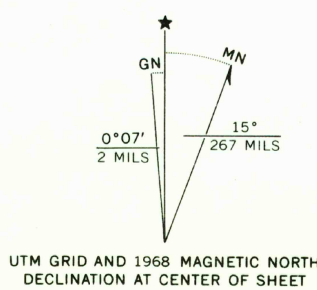
BIG HOLLOW WASH QUADRANGLE
UTAH—KANE CO.
7.5 MINUTE SERIES (TOPOGRAPHIC)

37°22'30" N
111°15' W
MOODY CREEK 1:62 500

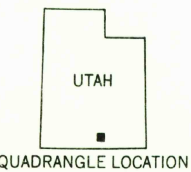


EAST OF THE NAVAL
37°22'30" N
111°15' W

Mapped, edited, and published by the Geological Survey
Control by USGS and USC&GS
Topography by photogrammetric methods from aerial
photographs taken 1966. Field checked 1968
Polyconic projection. 1927 North American datum
10,000-foot grid based on Utah coordinate system, south zone
1000-meter Universal Transverse Mercator grid ticks,
zone 12, shown in blue
Fine red dashed lines indicate selected fence lines
Where omitted, land lines have not been established



USGS
HISTORICAL FILE
TOPOGRAPHIC DIVISION



ROAD CLASSIFICATION
Light-duty road, all weather, Unimproved road, fair or dry weather, improved surface

U.S.G.S. BIG HOLLOW WASH, UTAH
N3722.5—W11107.5/7.5

FILE COPY
TOPOGRAPHIC DIVISION

1968

MAR 19 1971

THIS MAP COMPLIES WITH NATIONAL MAP ACCURACY STANDARDS
FOR SALE BY U.S. GEOLOGICAL SURVEY, DENVER, COLORADO 80225, OR WASHINGTON, D.C. 20242
A FOLDER DESCRIBING TOPOGRAPHIC MAPS AND SYMBOLS IS AVAILABLE ON REQUEST