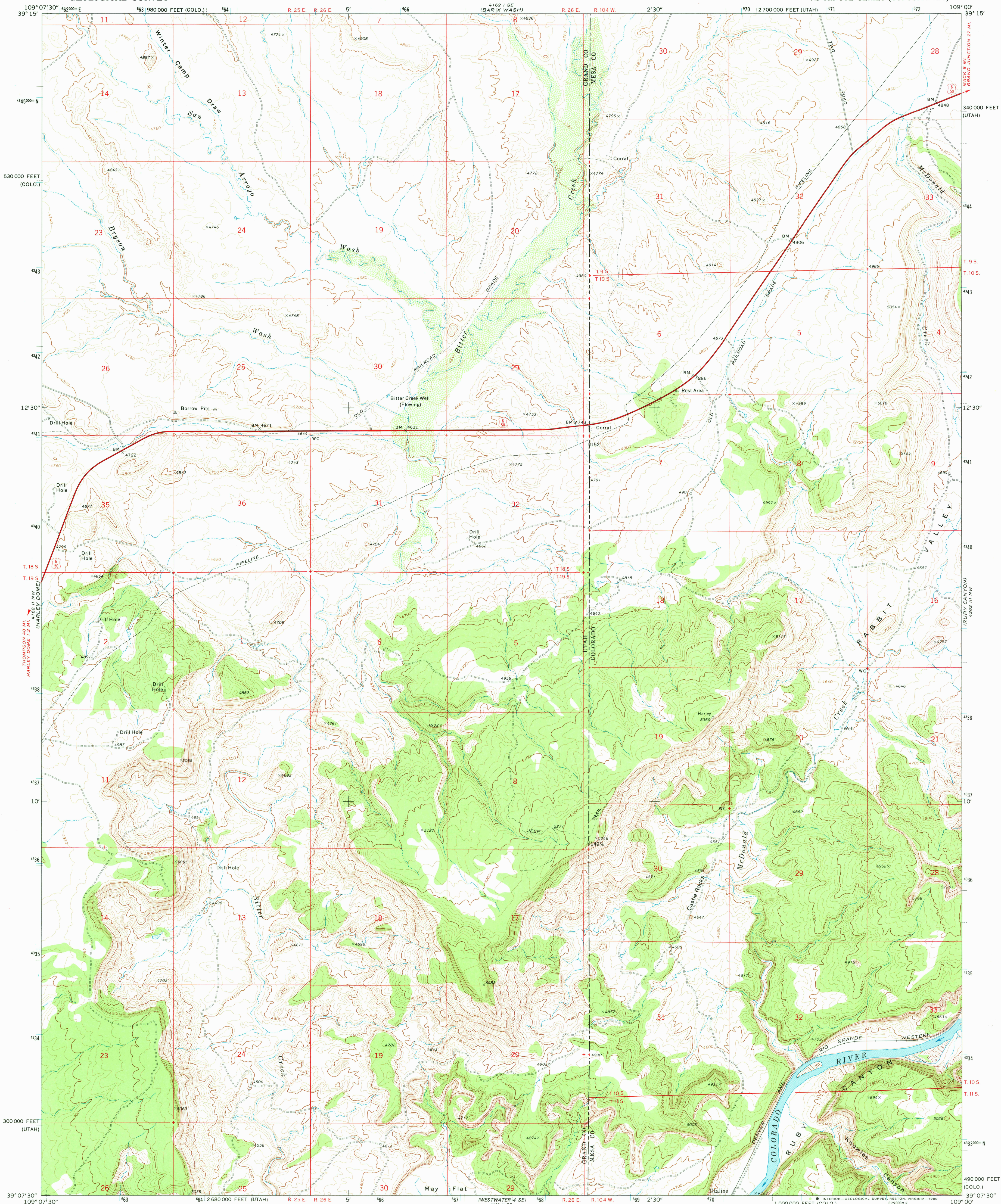
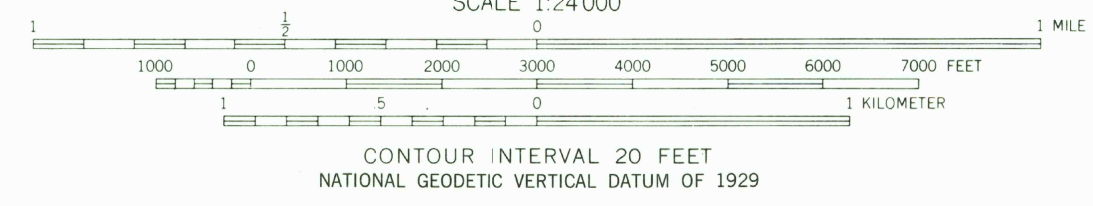
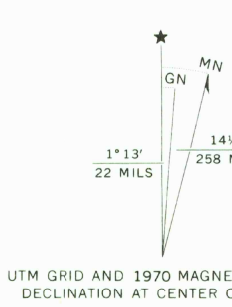


UNITED STATES
DEPARTMENT OF THE INTERIOR
GEOLOGICAL SURVEY

BITTER CREEK WELL QUADRANGLE
UTAH-COLORADO
7.5 MINUTE SERIES (TOPOGRAPHIC)



Mapped, edited, and published by the Geological Survey
Control by USGS and USC&GS
Topography by photogrammetric methods from aerial photographs taken 1969. Field checked 1970
Projection: Utah coordinate system, central zone (Lambert conformal conic)
10,000-foot grid ticks based on Utah coordinate system, central zone, and Colorado coordinate system, central zone 1000-meter Universal Transverse Mercator grid ticks, zone 12, shown in blue
Certain land lines are omitted because of insufficient data
To place on the predicted North American Datum 1983 move the projection lines 6 meters north and 58 meters east as shown by dashed corner ticks



ROAD CLASSIFICATION
Primary highway, hard surface ——— Light duty road, hard or improved surface ———
Secondary highway, hard surface ——— Unimproved road ———
○ Interstate Route ○ U.S. Route ○ State Route

BITTER CREEK WELL, UTAH-COLO.
N3907.5-W10900/7.5
1970
DMA 4162 II NE-SERIES V897

THIS MAP COMPLIES WITH NATIONAL MAP ACCURACY STANDARDS
FOR SALE BY U. S. GEOLOGICAL SURVEY, DENVER, COLORADO 80225, OR RESTON, VIRGINIA 22092
A FOLDER DESCRIBING TOPOGRAPHIC MAPS AND SYMBOLS IS AVAILABLE ON REQUEST

USGS
Historical File
Topographic Division

2200
FEB 17 1981