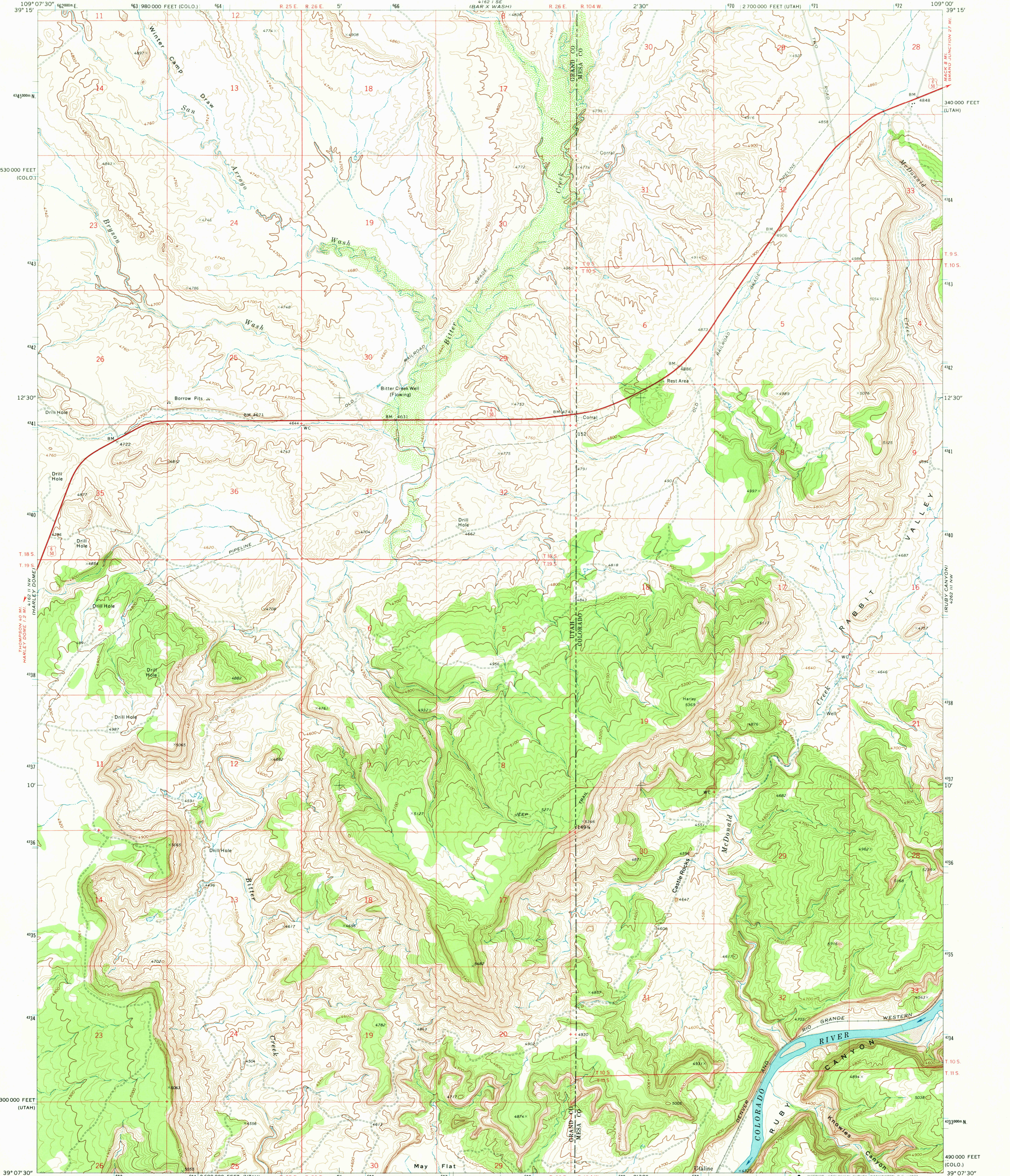


UNITED STATES
DEPARTMENT OF THE INTERIOR
GEOLOGICAL SURVEY

BITTER CREEK WELL QUADRANGLE
UTAH-COLORADO
7.5 MINUTE SERIES (TOPOGRAPHIC)



Mapped, edited, and published by the Geological Survey
Control by USGS and USC&GS
Topography by photogrammetric methods from aerial photographs taken 1969. Field checked 1970
Projection: Utah coordinate system, central zone (Lambert conformal conic)
10,000-foot grid ticks based on Utah coordinate system, central zone, and Colorado coordinate system, central zone
1000-meter Universal Transverse Mercator grid ticks, zone 12, shown in blue
Certain land lines are omitted because of insufficient data

SCALE 1:24,000
1 0000 2000 4000 6000 8000 10000 FEET
1 5 10 20 30 40 50 60 70 80 90 100 METERS
CONTOUR INTERVAL 20 FEET
DATUM IS MEAN SEA LEVEL

ROAD CLASSIFICATION
Primary highway, hard surface
Secondary highway, hard surface
Light-duty road, hard or improved surface
Unimproved road
Interstate Route
U. S. Route
State Route

UTM GRID AND 1970 MAGNETIC NORTH DECLINATION AT CENTER OF SHEET
1° 13' 22" M
14° 288' M

QUADRANGLE LOCATION
UTAH

BITTER CREEK WELL, UTAH-COLO.
N3907.5-W10900.7.5
1970
AMS 4162 II NE-SERIES V897

THIS MAP COMPLIES WITH NATIONAL MAP ACCURACY STANDARDS
FOR SALE BY U. S. GEOLOGICAL SURVEY, DENVER, COLORADO 80225, OR WASHINGTON, D. C. 20242
A FOLDER DESCRIBING TOPOGRAPHIC MAPS AND SYMBOLS IS AVAILABLE ON REQUEST

MAY 16 1973
3070