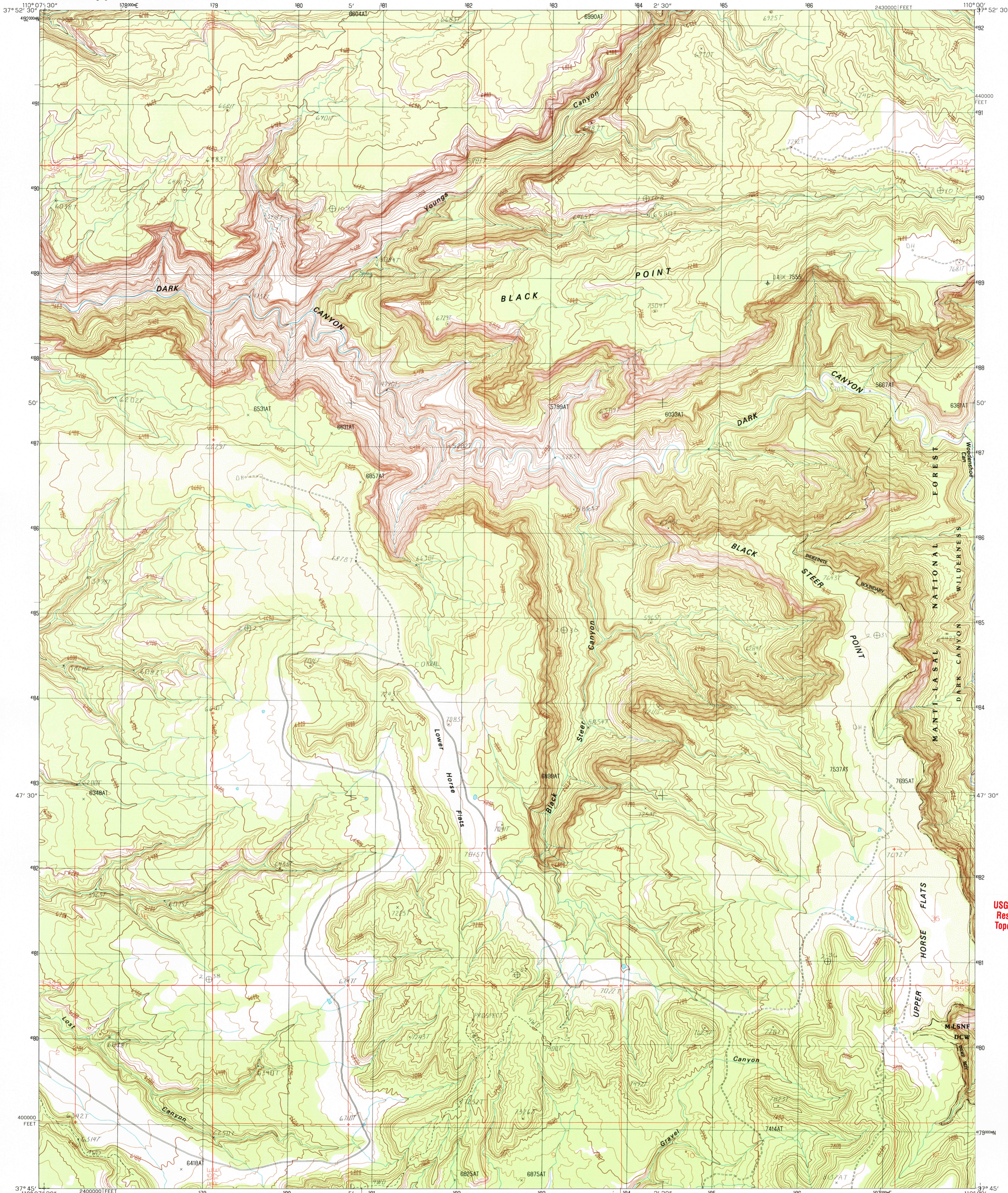




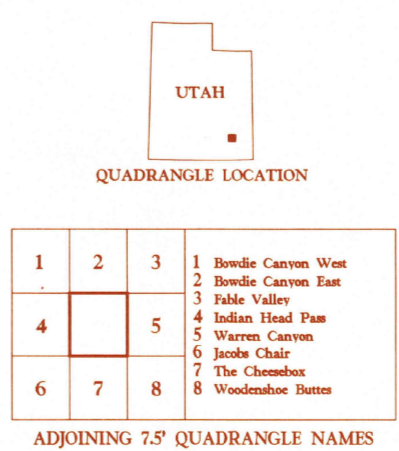
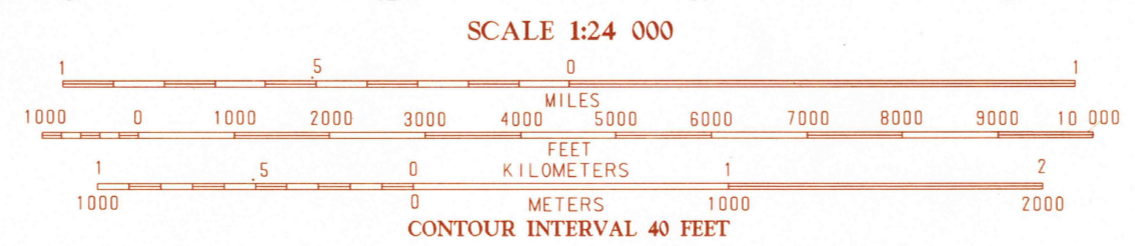
U.S. DEPARTMENT OF THE INTERIOR  
U.S. GEOLOGICAL SURVEY

BLACK STEER CANYON QUADRANGLE  
UTAH-SAN JUAN CO.  
7.5 MINUTE SERIES (TOPOGRAPHIC)



PRODUCED BY THE UNITED STATES GEOLOGICAL SURVEY  
CONTROL BY USGS, NOS/NOAA  
COMPILED FROM AERIAL PHOTOGRAPHS TAKEN 1981  
FIELD CHECKED 1982 MAP EDITED 1987  
PROJECTION LAMBERT CONFORMAL CONIC  
GRID 100-METER UNIVERSAL TRANSVERSE MERCATOR  
ZONE 12 8400000 STATE GRID TICKS UTAH, SOUTH ZONE  
UTM GRID DECLINATION 0°34' EAST  
1987 MAGNETIC NORTH DECLINATION 13' EAST  
VERTICAL DATUM NATIONAL GEODETIC VERTICAL DATUM OF 1929  
HORIZONTAL DATUM 1983 NORTH AMERICAN DATUM  
To place on the predicted North American Datum of 1983,  
move the projection lines as shown by dashed corner ticks  
(5 meters north and 61 meters east)  
There may be private inholdings within the boundaries of any  
Federal and State Reservations shown on this map  
Where omitted, land lines have not been established  
All marginal data and lettering generated and positioned by  
automated type placement procedures

**PROVISIONAL MAP**  
Produced from original  
manuscript drawings. Informa-  
tion shown as of date of  
photography.



ROAD LEGEND

Improved Road  
Unimproved Road  
Trail

Interstate Route U.S. Route State Route

BLACK STEER CANYON, UTAH  
PROVISIONAL EDITION 1987

THIS MAP COMPLIES WITH NATIONAL MAP ACCURACY STANDARDS  
FOR SALE BY U.S. GEOLOGICAL SURVEY, P.O. BOX 25286, DENVER, COLORADO 80225  
A FOLDER DESCRIBING TOPOGRAPHIC MAPS AND SYMBOLS IS AVAILABLE ON REQUEST

USGS Library  
Reston, VA.  
Topo Archive

3 1818 00422908 2

ISBN 0607-55545-5  
9780607555455

NOV 18 2004