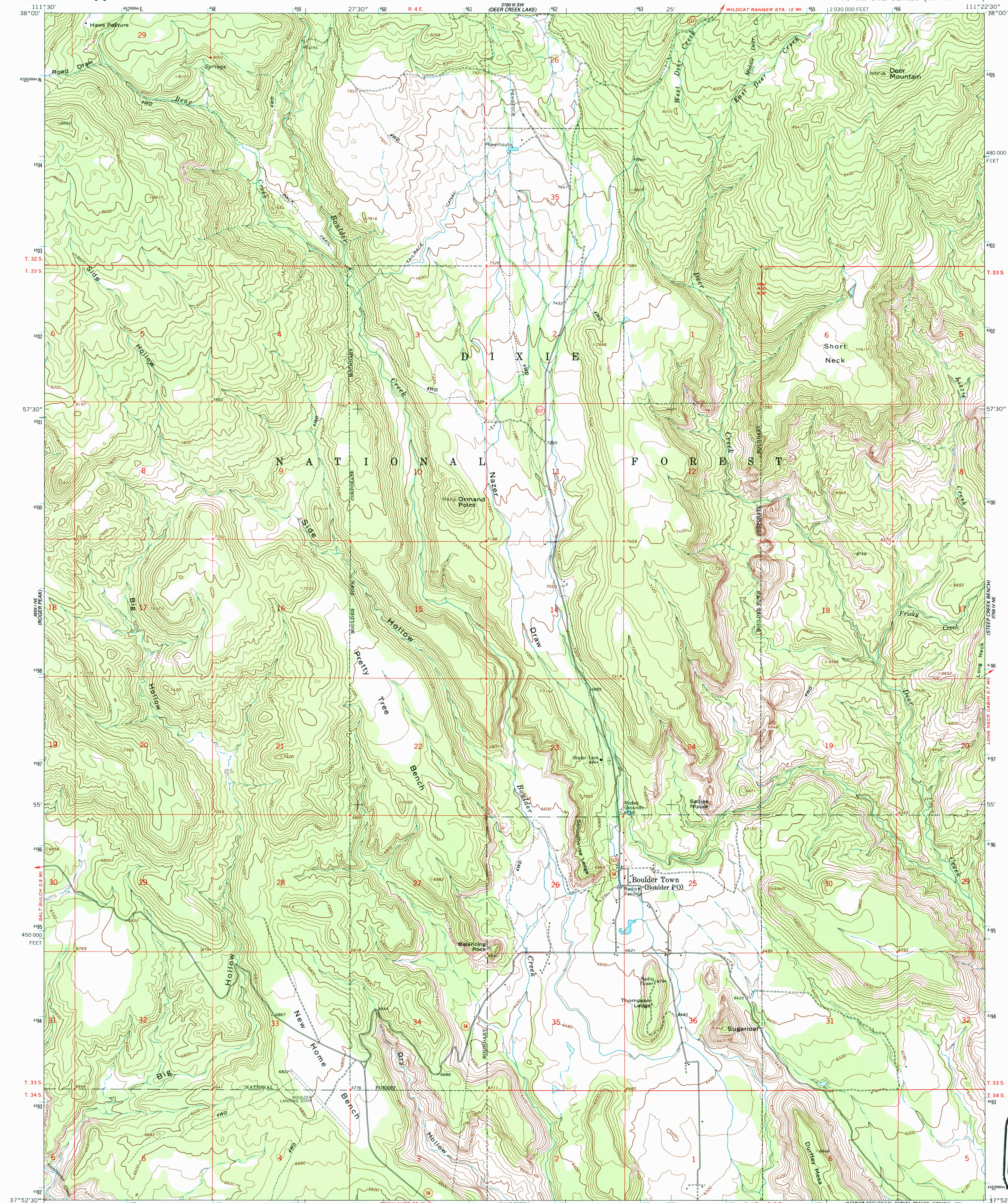
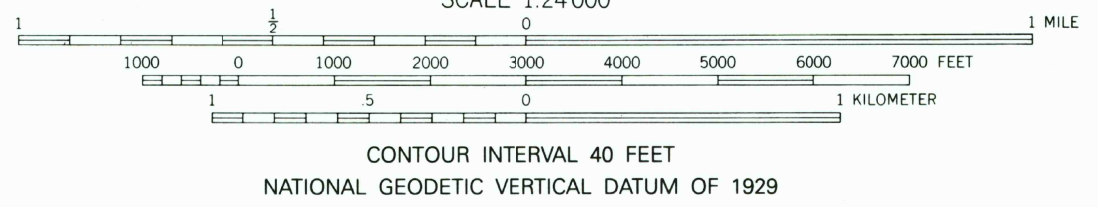
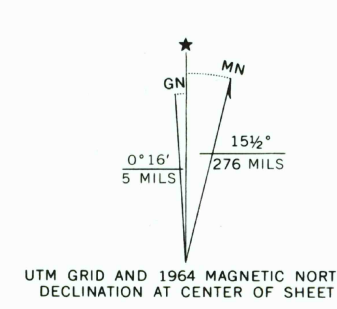


JACOBS RESERVOIR

STEEP CREEK BENCH (LOWER BENCH RESERVOIR)



Mapped, edited, and published by the Geological Survey
Control by USGS and NOS/NOAA
Topography by photogrammetric methods from aerial photographs taken 1958. Field checked 1964
Polyconic projection. 1927 North American Datum
10,000-foot grid based on Utah coordinate system, south zone
1000-meter Universal Transverse Mercator grid ticks, zone 12, shown in blue
The difference between 1927 North American Datum and North American Datum of 1983 (NAD 83) for 7.5 minute intersections is given in USGS Bulletin 1875. The NAD 83 is shown by dashed corner ticks
Where omitted, land lines have not been established
There may be private inholdings within the boundaries of the National or State reservations shown on this map



ROAD CLASSIFICATION
Light-duty ————— Unimproved dirt - - - - -
State Route ○

BOULDER TOWN, UTAH
37111-H4-TF-024

1964
PHOTOINSPECTED 1976
DMA 3759 IV NW-SERIES V897

Map photoinspected 1976
No major culture or drainage changes observed

USGS HISTORICAL
MAP ARCHIVES
JUL 31 1990
REC'D FILE COPY

ISBN 0-607-54430-9
9 780607 544305