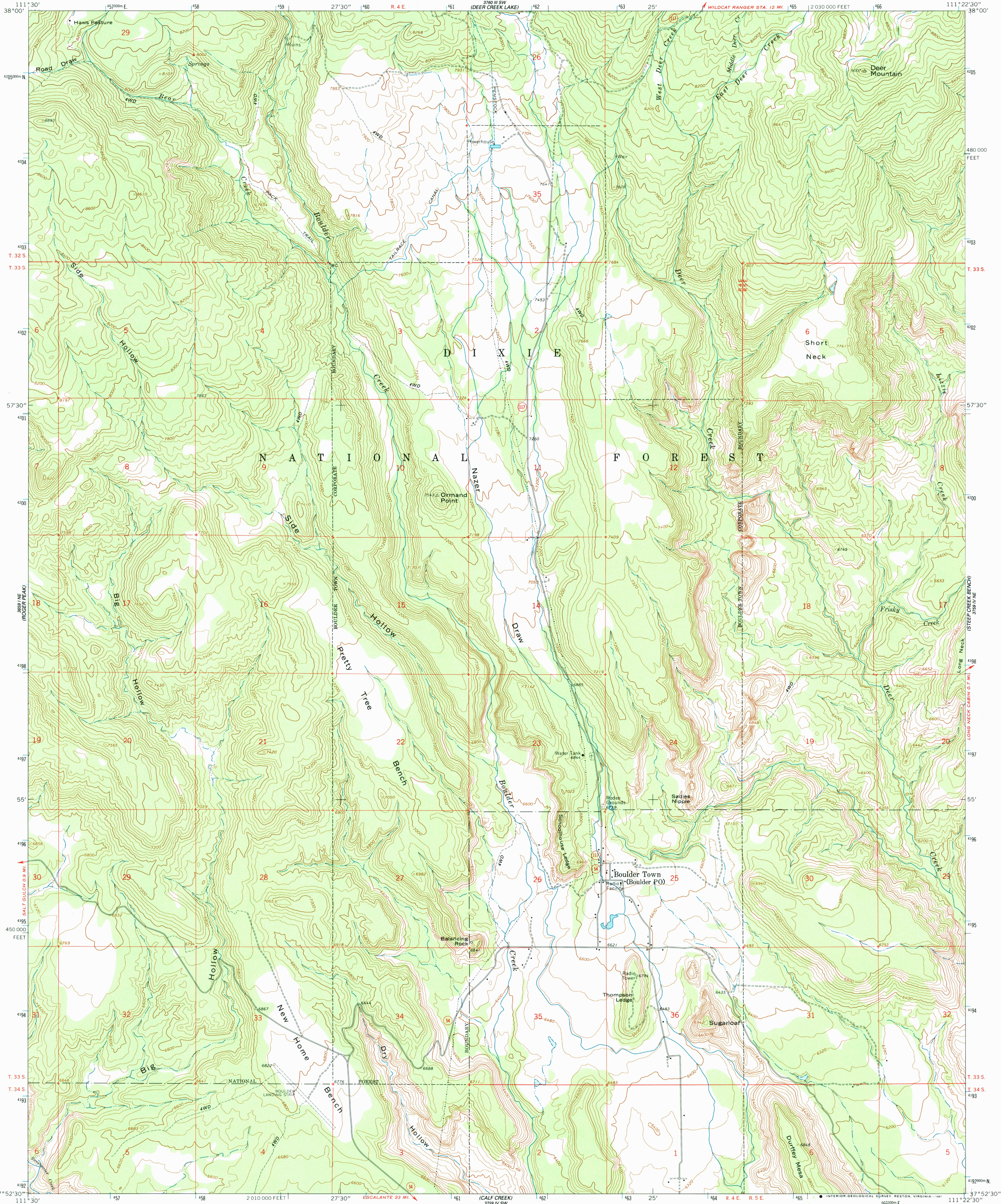


UNITED STATES
DEPARTMENT OF THE INTERIOR
GEOLOGICAL SURVEY

BOULDER TOWN QUADRANGLE
UTAH—GARFIELD CO.
7.5 MINUTE SERIES (TOPOGRAPHIC)



Mapped, edited, and published by the Geological Survey

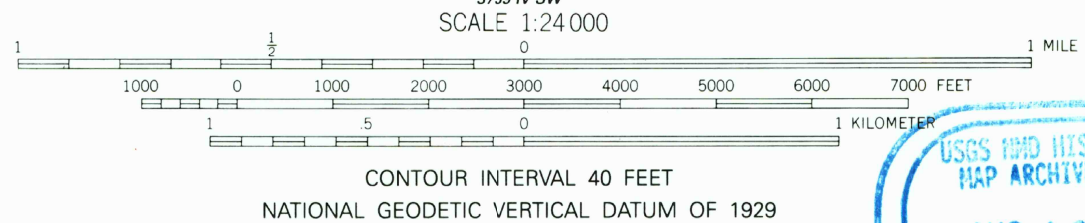
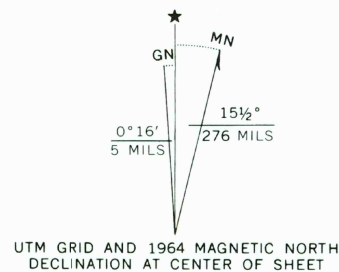
Control by USGS and NOS/NOAA

Topography by photogrammetric methods from aerial photographs taken 1958. Field checked 1964

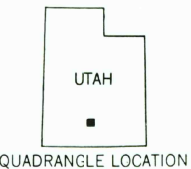
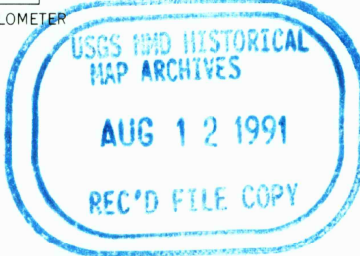
Polyconic projection. 1927 North American Datum
10,000-foot grid based on Utah coordinate system,
south zone
1000-meter Universal Transverse Mercator grid ticks, zone 12,
shown in blue
The difference between 1927 North American Datum and North
American Datum of 1983 (NAD 83) for 7.5 minute intersections is
given in USGS Bulletin 1875. The NAD 83 is shown by dashed
corner ticks

Where omitted, land lines have not been established

There may be private inholdings within the boundaries of
the National or State reservations shown on this map



THIS MAP COMPLIES WITH NATIONAL MAP ACCURACY STANDARDS
FOR SALE BY U.S. GEOLOGICAL SURVEY, DENVER, COLORADO 80225, OR RESTON, VIRGINIA 22092
A FOLDER DESCRIBING TOPOGRAPHIC MAPS AND SYMBOLS IS AVAILABLE ON REQUEST



Map photoinspected 1976
No major cultura or drainage changes observed

ROAD CLASSIFICATION
Light-duty ————— Unimproved dirt - - - - -
State Route ○

BOULDER TOWN, UTAH
37111-H4-TF-024

1964
PHOTOINSPECTED 1976
DMA 3759 IV NW-SERIES V897