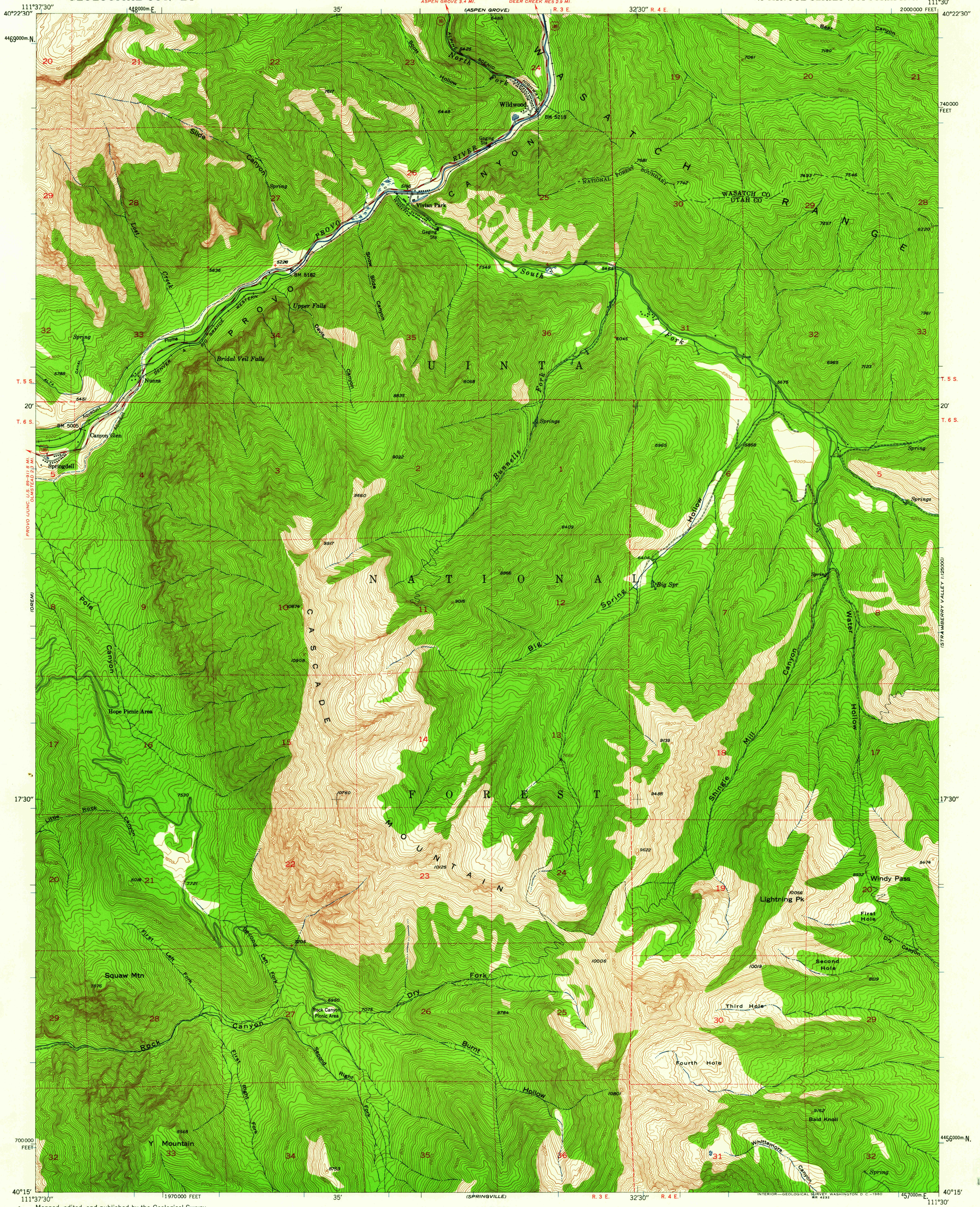
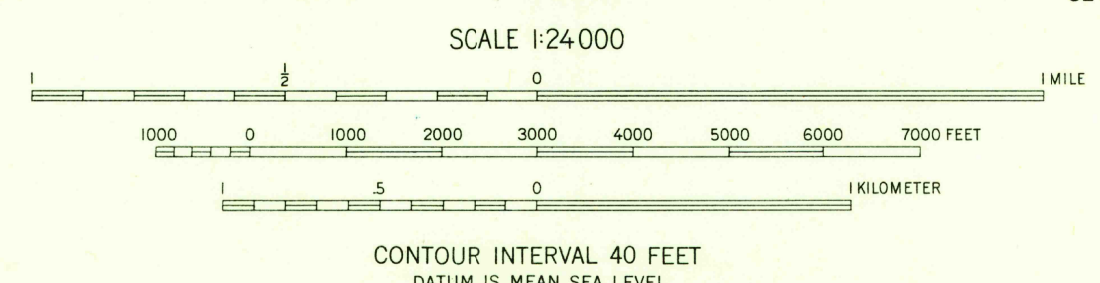
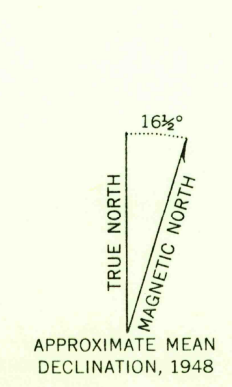


UNITED STATES  
DEPARTMENT OF THE INTERIOR  
GEOLOGICAL SURVEY

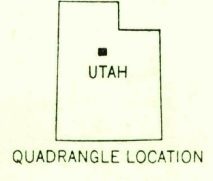
BRIDAL VEIL FALLS QUADRANGLE  
UTAH  
7.5 MINUTE SERIES (TOPOGRAPHIC)



Mapped, edited, and published by the Geological Survey  
Control by USGS and USC&GS  
Topography from aerial photographs by multiplex methods  
Aerial photographs taken 1946. Field check 1948  
Polyconic projection, 1927 North American datum  
10,000-foot grid based on Utah coordinate system,  
central zone  
1000-meter Universal Transverse Mercator grid ticks,  
zone 12, shown in blue  
Unchecked elevations are shown in brown  
Dashed land lines indicate approximate location



USGS  
HISTORICAL FILE  
TOPOGRAPHIC DIVISION



ROAD CLASSIFICATION  
Medium-duty ——— Light-duty ———  
Unimproved dirt - - - - -  
U. S. Route ○ State Route ○

BRIDAL VEIL FALLS, UTAH  
N4015-W1130/7.5

THIS MAP COMPLIES WITH NATIONAL MAP ACCURACY STANDARDS  
FOR SALE BY U. S. GEOLOGICAL SURVEY, DENVER 25, COLORADO OR WASHINGTON 25, D. C.  
A FOLDER DESCRIBING TOPOGRAPHIC MAPS AND SYMBOLS IS AVAILABLE ON REQUEST

U.S.G.S.  
FIELD COPY  
TOPOGRAPHIC DIVISION

JAN 4 1961  
1575