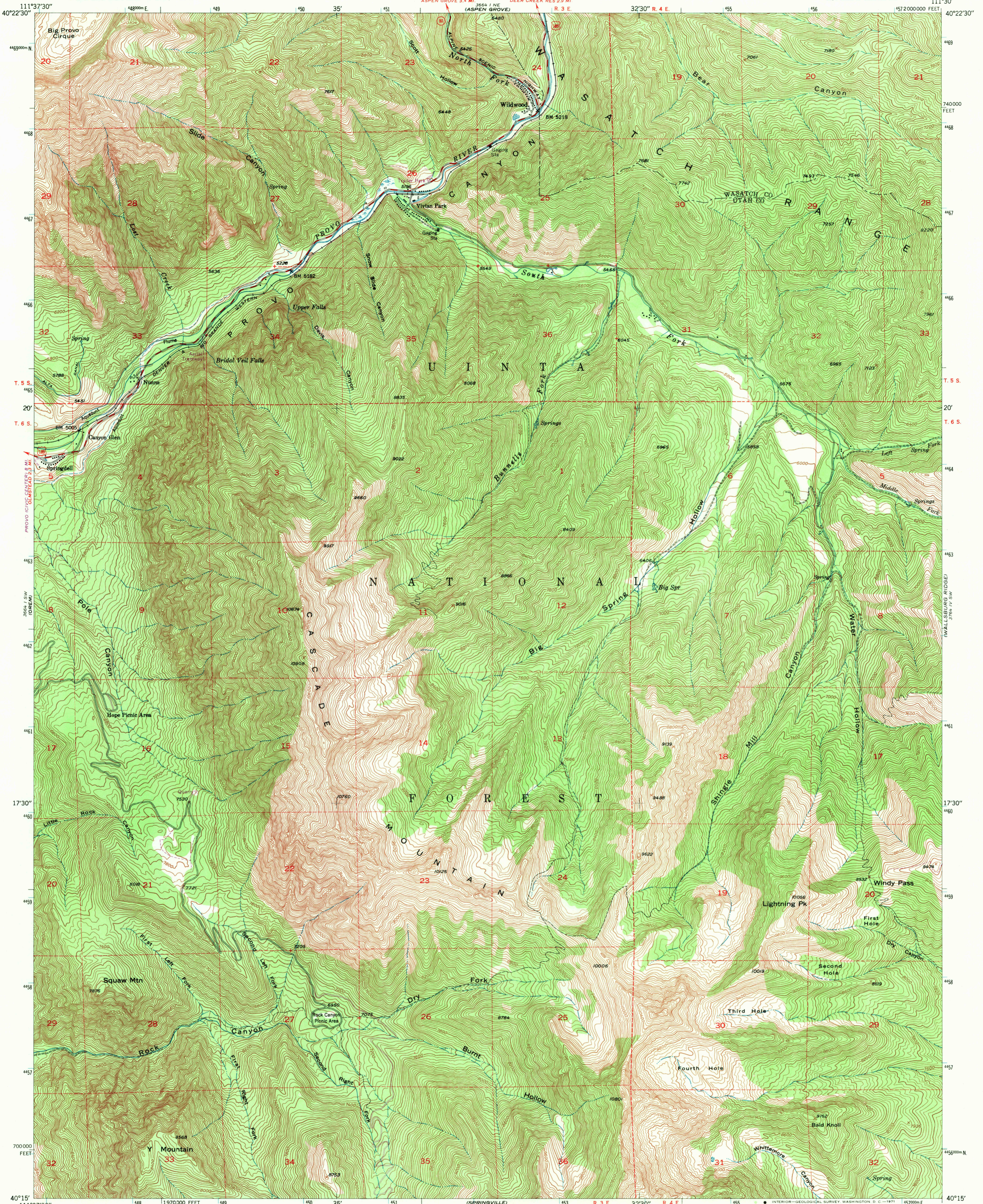
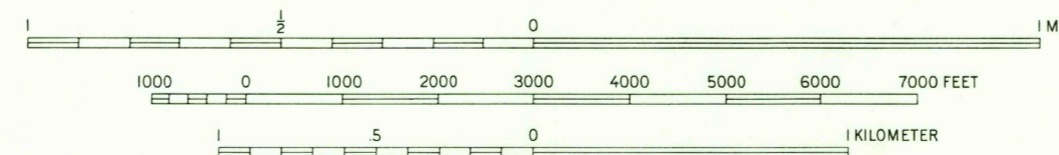
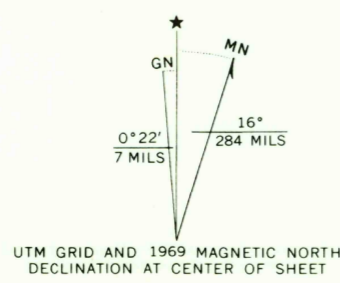


UNITED STATES
DEPARTMENT OF THE INTERIOR
GEOLOGICAL SURVEY

BRIDAL VEIL FALLS QUADRANGLE
UTAH
7.5 MINUTE SERIES (TOPOGRAPHIC)
SE/4 OREM 15' QUADRANGLE



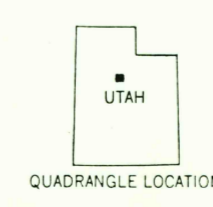
Mapped, edited, and published by the Geological Survey
Control by USGS and USC&GS
Topography from aerial photographs by multiplex methods
Aerial photographs taken 1946. Field check 1948
Polyconic projection. 1927 North American datum
10,000-foot grid based on Utah coordinate system,
central zone
1000-meter Universal Transverse Mercator grid ticks,
zone 12, shown in blue
Revisions shown in purple compiled from aerial photographs
taken 1969. This information not field checked



CONTOUR INTERVAL 40 FEET
DATUM IS MEAN SEA LEVEL

USGS
HISTORICAL FILE
TOPOGRAPHIC DIVISION

ROAD CLASSIFICATION
Medium-duty — Light duty
Unimproved dirt —
U.S. Route — State Route



BRIDAL VEIL FALLS, UTAH
SE/4 OREM 15' QUADRANGLE
N4015—W11130/7.5

U.S.G.S.
FILE COPY
TOPOGRAPHIC DIVISION

1948
PHOTOREVISED 1969
AMS 3664 1 SE—SERIES V897

THIS MAP COMPLIES WITH NATIONAL MAP ACCURACY STANDARDS.
FOR SALE BY U.S. GEOLOGICAL SURVEY, DENVER, COLORADO 80225 OR WASHINGTON, D.C. 20242
A FOLDER DESCRIBING TOPOGRAPHIC MAPS AND SYMBOLS IS AVAILABLE ON REQUEST

2545
FEB 11 1971