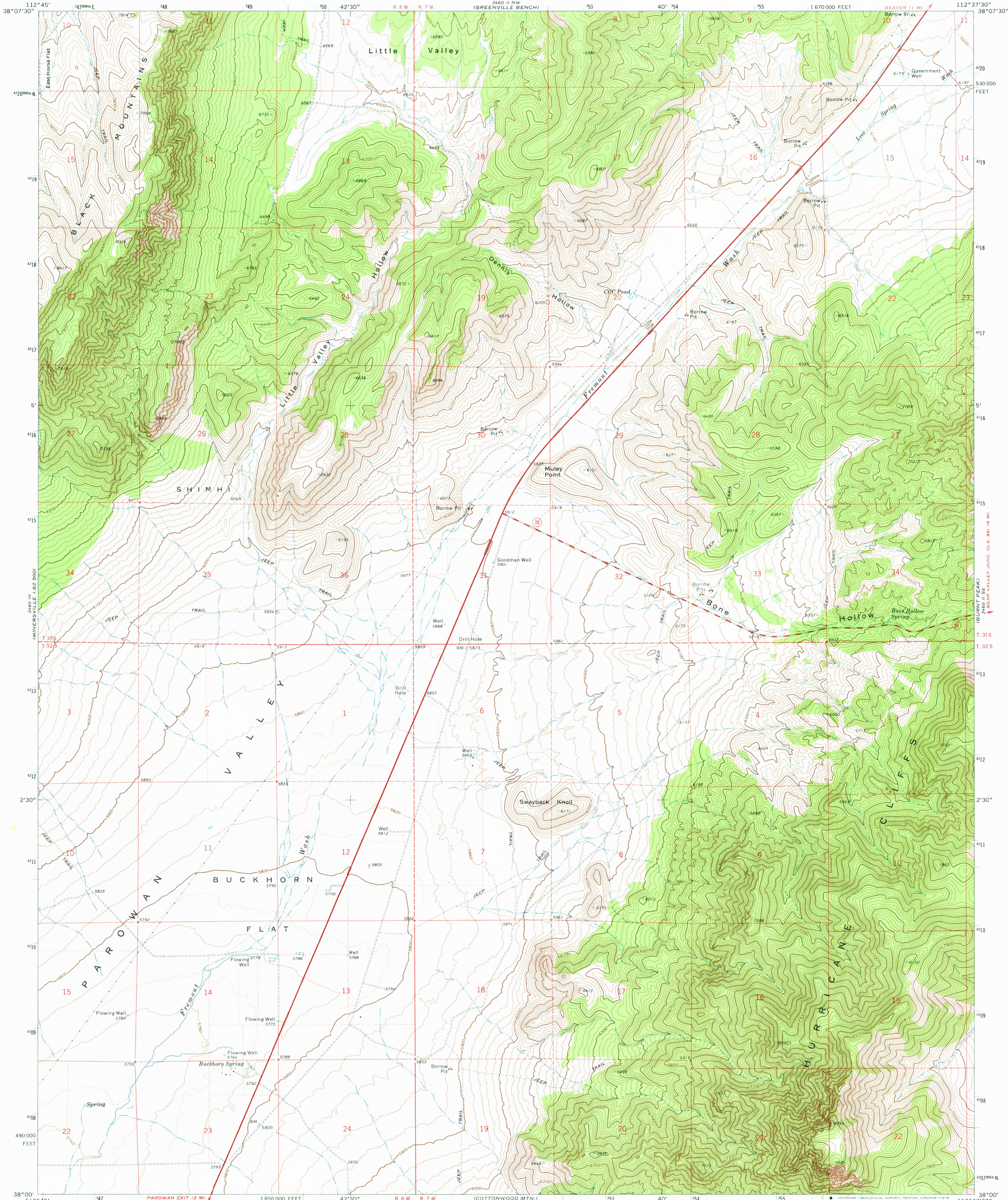


3460 III
MINERSVILLE
1:62,500

UNITED STATES
DEPARTMENT OF THE INTERIOR
GEOLOGICAL SURVEY

BUCKHORN FLAT QUADRANGLE
UTAH—IRON CO.
7.5 MINUTE SERIES (TOPOGRAPHIC)

3460 IINE
(KANE CANYON)



Mapped, edited, and published by the Geological Survey

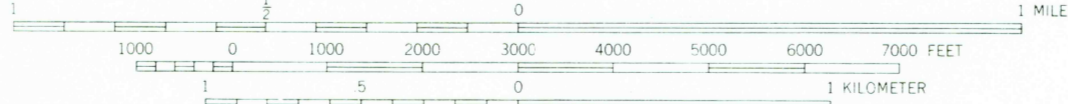
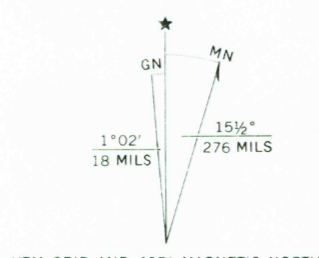
Control by USGS and USC&GS

Topography by photogrammetric methods from aerial
photographs taken 1970. Field checked 1971

Projection and 10,000-foot grid ticks: Utah coordinate
system, south zone (Lambert conformal conic)

1000-meter Universal Transverse Mercator grid ticks,
zone 12, shown in blue. 1927 North American datum

Fine red dashed lines indicate selected fence lines



CONTOUR INTERVAL 20 FEET
DOTTED LINES REPRESENT 10-FOOT CONTOURS
NATIONAL GEODETIC VERTICAL DATUM OF 1929



ROAD CLASSIFICATION	
Primary highway, hard surface	Light-duty road, hard or improved surface
Secondary highway, hard surface	Unimproved road
Interstate Route	U. S. Route
	State Route

USGS
Historical File
Topographic Division

BUCKHORN FLAT, UTAH
N3800—W11237.5/7.5

1971

AMS 3460 II SW—SERIES V897

THIS MAP COMPLIES WITH NATIONAL MAP ACCURACY STANDARDS
FOR SALE BY U. S. GEOLOGICAL SURVEY, DENVER, COLORADO 80225, OR RESTON, VIRGINIA 22092
A FOLDER DESCRIBING TOPOGRAPHIC MAPS AND SYMBOLS IS AVAILABLE ON REQUEST

DEC 11 1974

3300