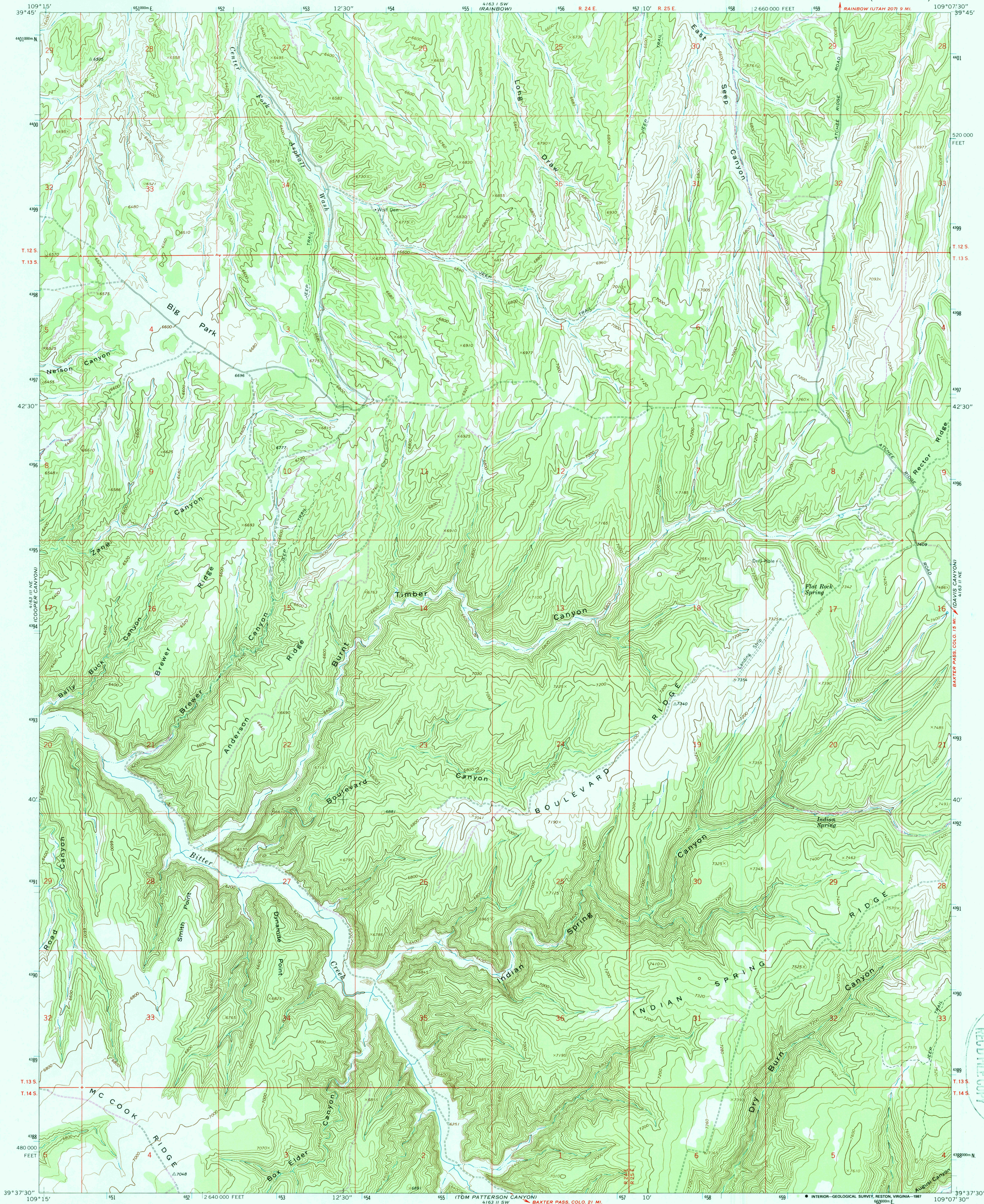


UNITED STATES  
DEPARTMENT OF THE INTERIOR  
GEOLOGICAL SURVEY

BURNT TIMBER CANYON QUADRANGLE  
UTAH-UINTAH CO.  
7.5 MINUTE SERIES (TOPOGRAPHIC)



Mapped, edited, and published by the Geological Survey

Control by USGS and USC&GS

Topography by photogrammetric methods from aerial photographs taken 1965. Field checked 1966

Polyconic projection. 1927 North American datum

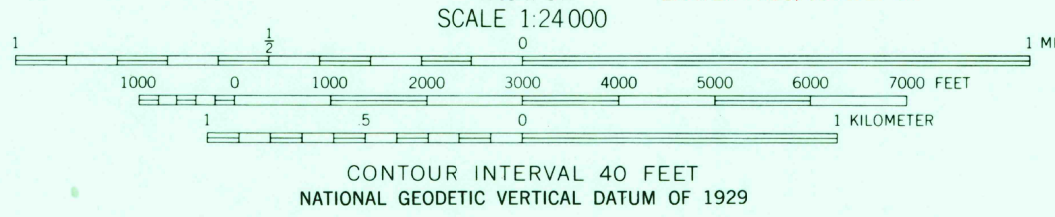
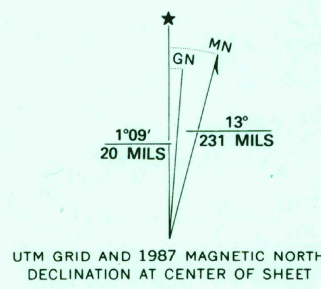
10,000-foot grid based on Utah coordinate system, central zone

1000-meter Universal Transverse Mercator grid ticks, zone 12, shown in blue

Fine red dashed lines indicate selected fence lines

To place on the predicted North American Datum 1983, move the projection lines 7 meters north and 58 meters east as shown by dashed corner ticks

Revisions shown in purple compiled from aerial photographs taken 1983 and other sources. This information not field checked. Map added 1987



CONTOUR INTERVAL 40 FEET  
NATIONAL GEODETIC VERTICAL DATUM OF 1929

THIS MAP COMPLIES WITH NATIONAL MAP ACCURACY STANDARDS  
FOR SALE BY U.S. GEOLOGICAL SURVEY, DENVER, COLORADO 80225, OR RESTON, VIRGINIA 22092  
A FOLDER DESCRIBING TOPOGRAPHIC MAPS AND SYMBOLS IS AVAILABLE ON REQUEST



ROAD CLASSIFICATION  
Light-duty ————— Unimproved dirt - - - - -

BURNT TIMBER CANYON, UTAH  
39109-F2-TF-024

1966  
PHOTOREVISED 1987  
DMA 4163 II NW-SERIES V897

RECD FILE COPY

JUN 29 1988