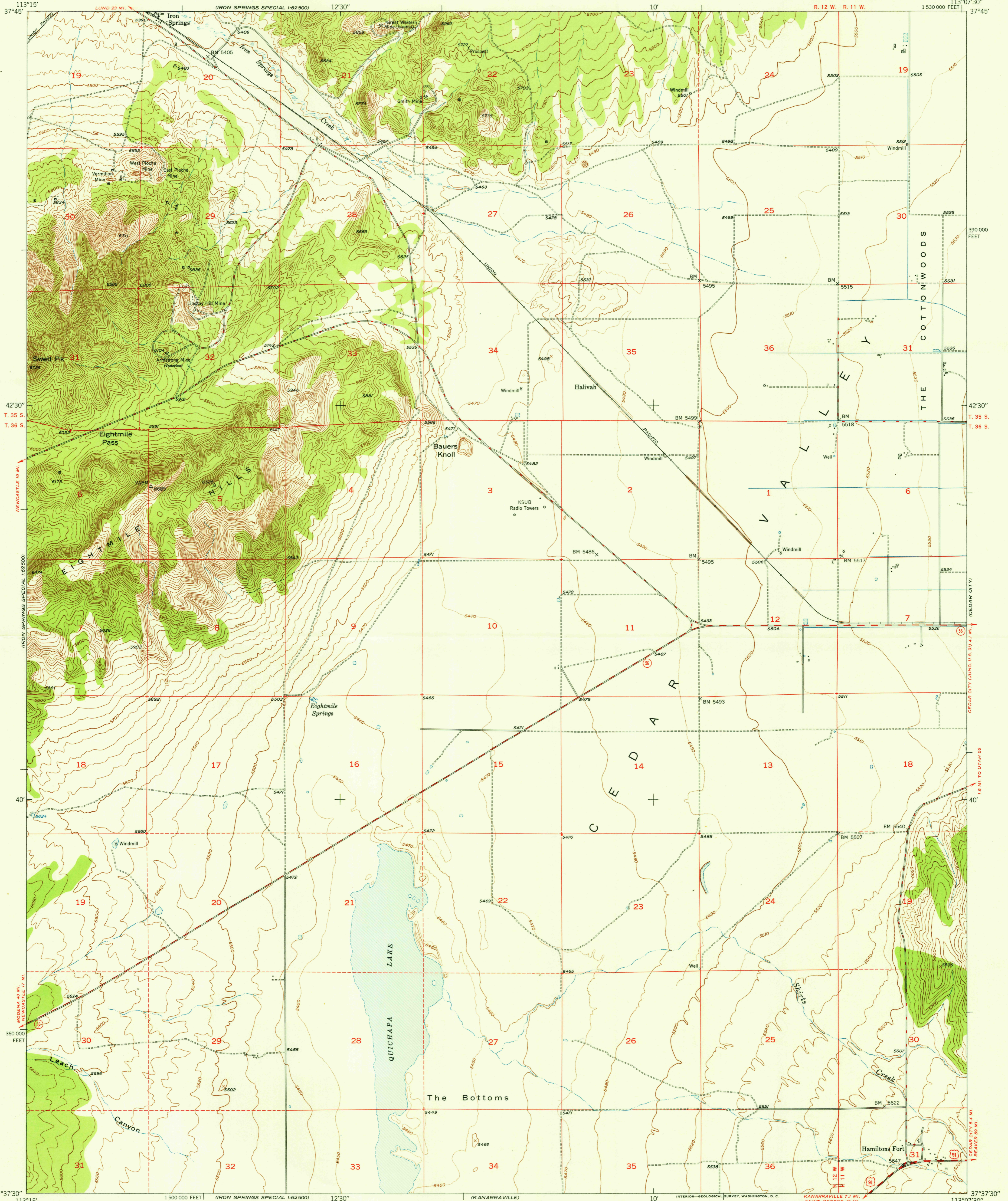
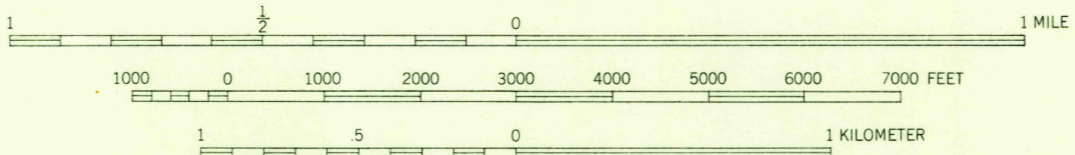
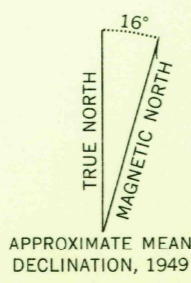


U.S.G.S.  
FILE COPY  
Inspection and Editing



Mapped, edited, and published by the Geological Survey  
Control by USGS, USC&GS, and State of Utah  
Topography from aerial photographs by multiplex methods,  
and by plane-table surveys 1949  
Polyconic projection. 1927 North American datum  
10,000-foot grid based on Utah coordinate system,  
south zone  
Dashed land lines indicate approximate location



CONTOUR INTERVAL 20 FEET  
DOTTED LINES REPRESENT HALF INTERVAL CONTOURS  
DATUM IS MEAN SEA LEVEL

THIS MAP COMPLIES WITH NATIONAL MAP ACCURACY STANDARDS

FOR SALE BY U. S. GEOLOGICAL SURVEY, FEDERAL CENTER, DENVER, COLORADO OR WASHINGTON 25, D. C.  
A FOLDER DESCRIBING TOPOGRAPHIC MAPS AND SYMBOLS IS AVAILABLE ON REQUEST

USGS  
HISTORICAL FILE  
TOPOGRAPHIC DIVISION  
U.S.G.S.  
FILE COPY  
Inspection and Editing

ROAD CLASSIFICATION  
HARD-SURFACE ALL WEATHER ROADS DRY WEATHER ROADS  
Heavy-duty ——— 2 LANE IS LANE Improved dirt ———  
Medium-duty ——— 2 LANE IS LANE Unimproved dirt ———  
Loose-surface, graded, or narrow hard-surface - - - - -  
U. S. Route State Route

CEDAR CITY NW, UTAH  
N3737.5—W11307.5/7.5  
EDITION OF 1950