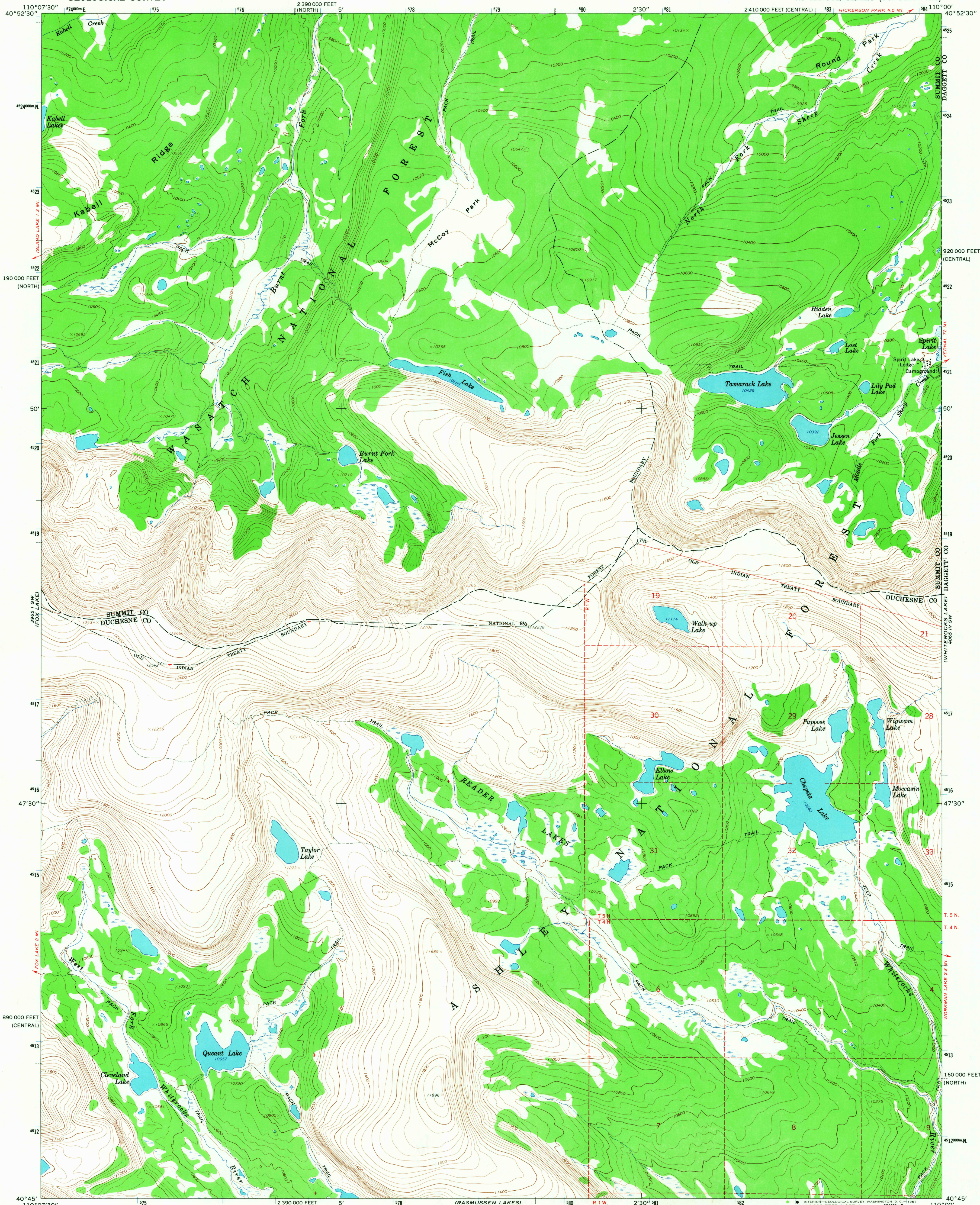
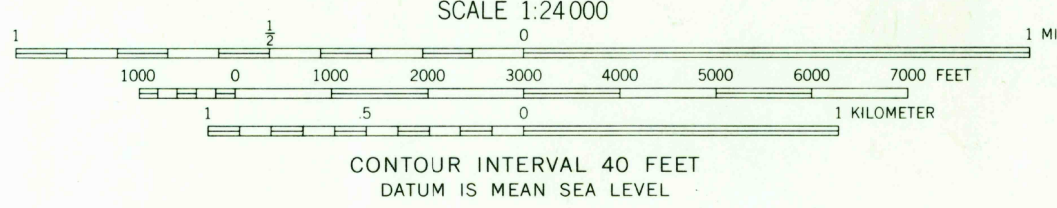
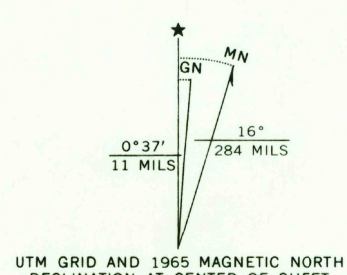


3965 IV NW  
(PARL. FILE 010 47N)



Mapped by the U. S. Forest Service  
Edited and published by the Geological Survey  
Control by USGS, USC&GS, and USFS  
Topography by photogrammetric methods from aerial  
photographs taken 1962. Field checked by USGS 1965  
Polyconic projection. 1927 North American datum  
10,000-foot grids based on Utah coordinate system,  
central and north zones  
1000-meter Universal Transverse Mercator grid ticks,  
zone 12, shown in blue  
Where omitted, land lines have not been established  
or are not shown because of insufficient data  
Areas covered by dashed light-blue pattern are subject  
to controlled inundation



USGS  
HISTORICAL FILE  
TOPOGRAPHIC DIVISION



ROAD CLASSIFICATION  
Light duty

CHEPETA LAKE, UTAH  
N4045-W11000/7.5  
1965  
AMS 3965 I SE-SERIES V897

FOR SALE BY U. S. GEOLOGICAL SURVEY, DENVER, COLORADO 80225, OR WASHINGTON, D. C. 20242  
A FOLDER DESCRIBING TOPOGRAPHIC MAPS AND SYMBOLS IS AVAILABLE ON REQUEST

3735  
APR 9 1968