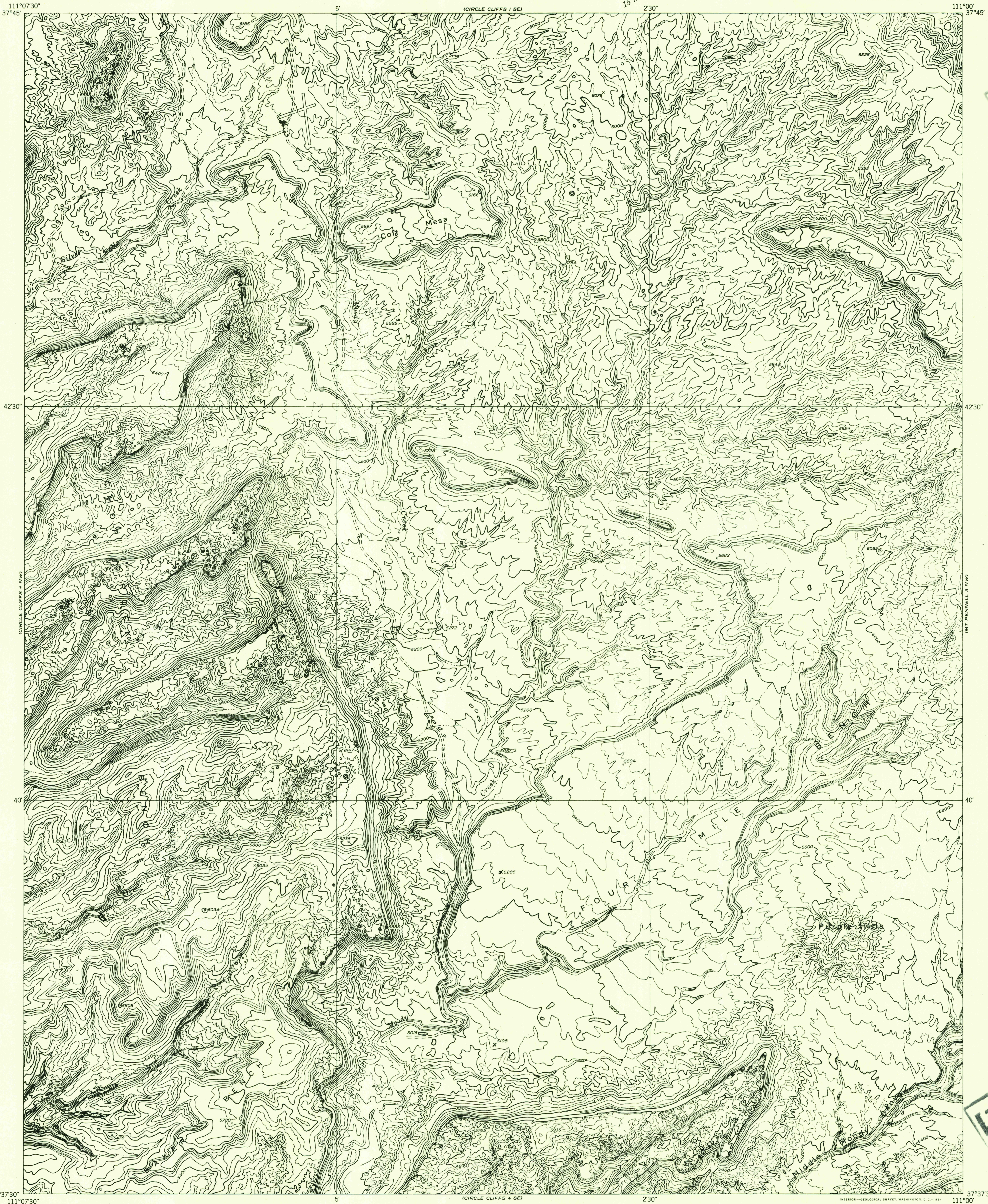


DEPARTMENT OF THE INTERIOR
GEOLOGICAL SURVEY

Preliminary edition
Pending completion of 1:62,500 scale
15 minute maps covering this area

CIRCLE CLIFFS 4 NE QUADRANGLE
UTAH—GARFIELD CO.



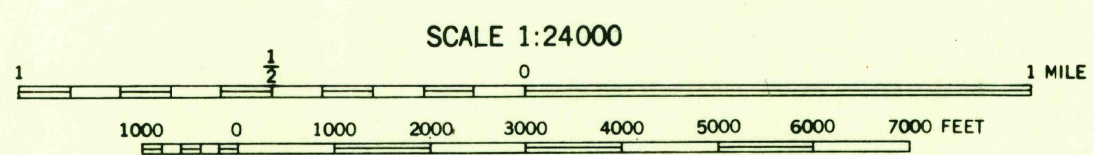
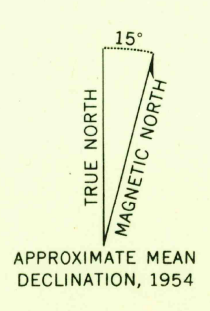
CIRCLE CLIFFS 1 SW
CIRCLE CLIFFS 4 NW
CIRCLE CLIFFS 4 SW

MT PENNELL 2 SW
MT PENNELL 3 NW
MT PENNELL 3 SW

FILE COPY

FILE COPY

Mapped by the Geological Survey 1953
Topography by multiplex methods from
aerial photographs taken 1952



USGS
HISTORICAL FILE
TOPOGRAPHIC DIVISION

ROAD CLASSIFICATION
Improved Unimproved

CONTOUR INTERVAL 40 FEET
DATUM IS MEAN SEA LEVEL

CIRCLE CLIFFS 4 NE, UTAH
N3737.5—W11100/7.5

JUN 24 1954

2052