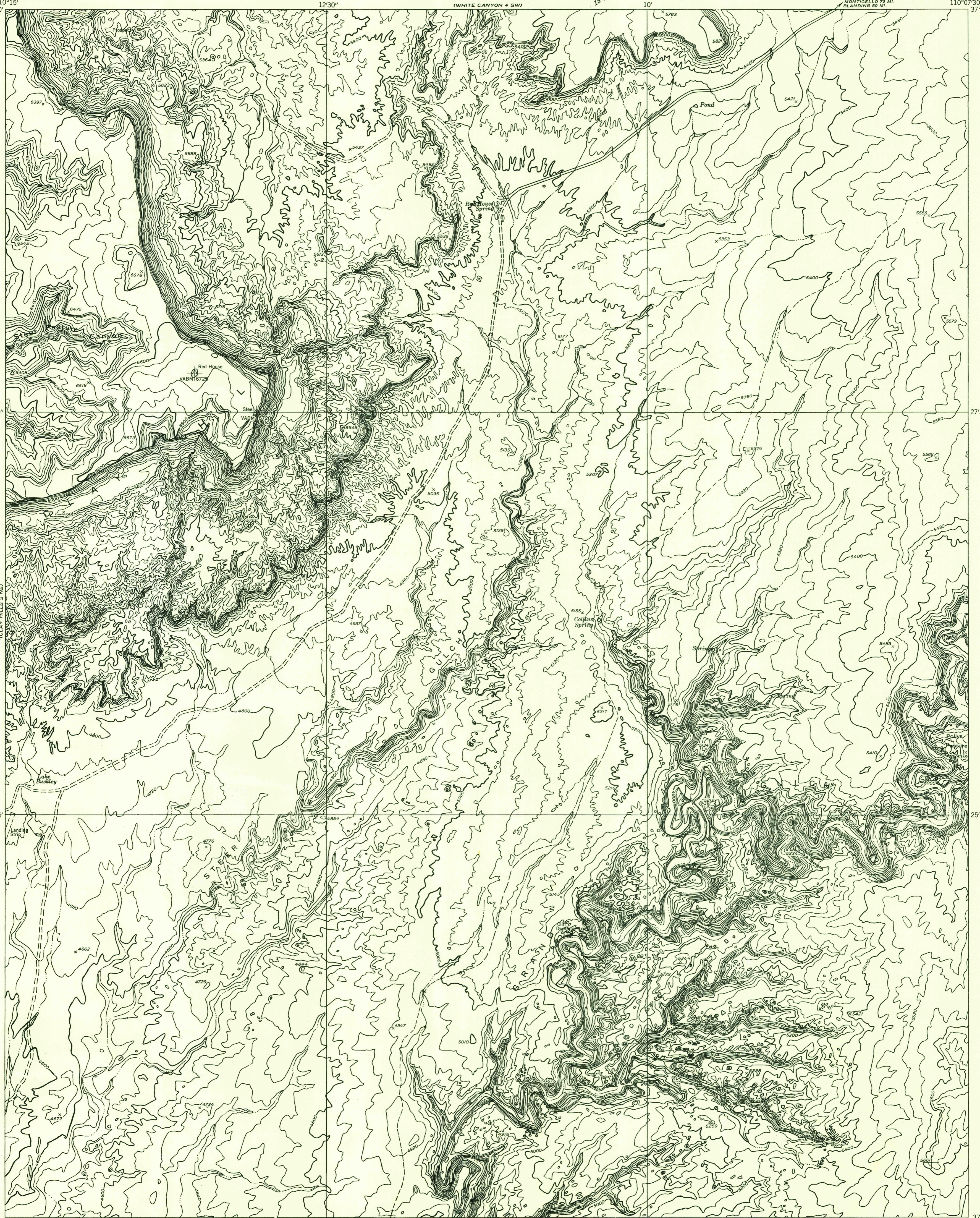
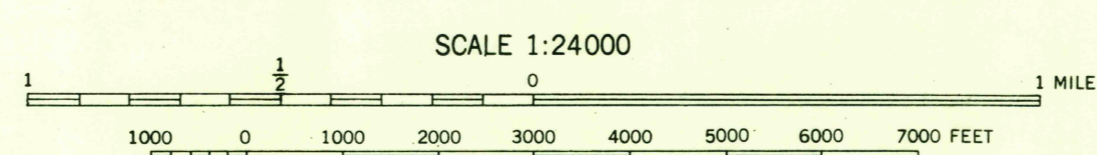
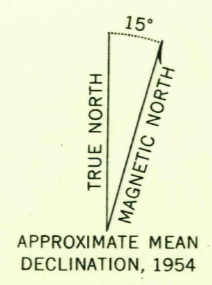


Preliminary edition
Pending completion of 1:62,500 scale
15 minute maps covering this area

U.S.G.S.
FILE COPY
TOPOGRAPHIC DIVISION



Mapped by the Geological Survey 1954
Topography by multiplex methods from
aerial photographs taken 1952



USGS
HISTORICAL FILE
TOPOGRAPHIC DIVISION

ROAD CLASSIFICATION
Improved ——— Unimproved - - - - -

CONTOUR INTERVAL 40 FEET
DATUM IS MEAN SEA LEVEL

CLAY HILLS 1 NW, UTAH
N3722.5—W11007.5/7.5

AUG 14 1955
2050