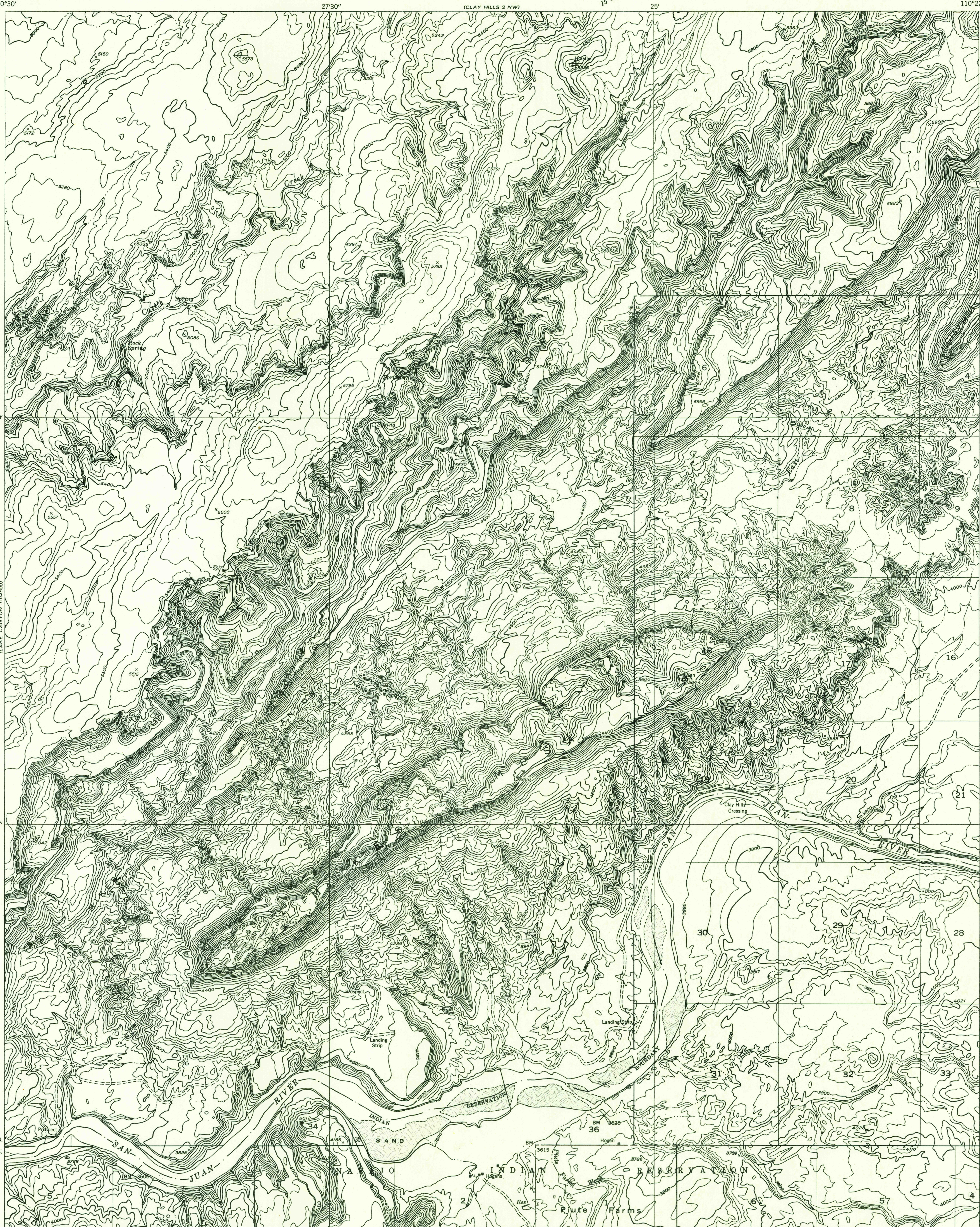


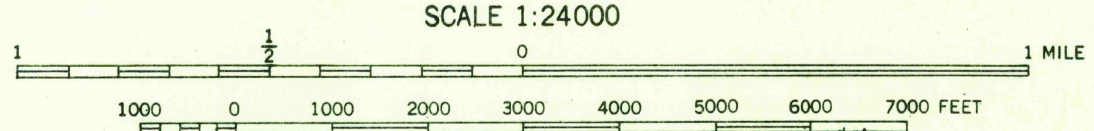
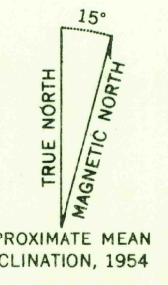
Preliminary edition  
Pending completion of 1:62,500 scale  
15 minute maps covering this area

U.S.G.S.  
FILE COPY  
TOPOGRAPHIC DIVISION



110°30' 27°30' (CLAY HILLS 2 NW) 25' 110°22'30" 37°22'30"

Mapped by the Geological Survey 1954  
Topography by multiplex methods from  
aerial photographs taken 1952



SCALE 1:24000  
CONTOUR INTERVAL 40 FEET  
DATUM IS MEAN SEA LEVEL

USGS  
HISTORICAL FILE  
TOPOGRAPHIC DIVISION

ROAD CLASSIFICATION  
Improved ——— Unimproved - - - - -

U.S.G.S.  
FILE COPY  
TOPOGRAPHIC DIVISION

CLAY HILLS 2 SW, UTAH  
N3715—W11022.5/7.5

OCT 5 1955

2050