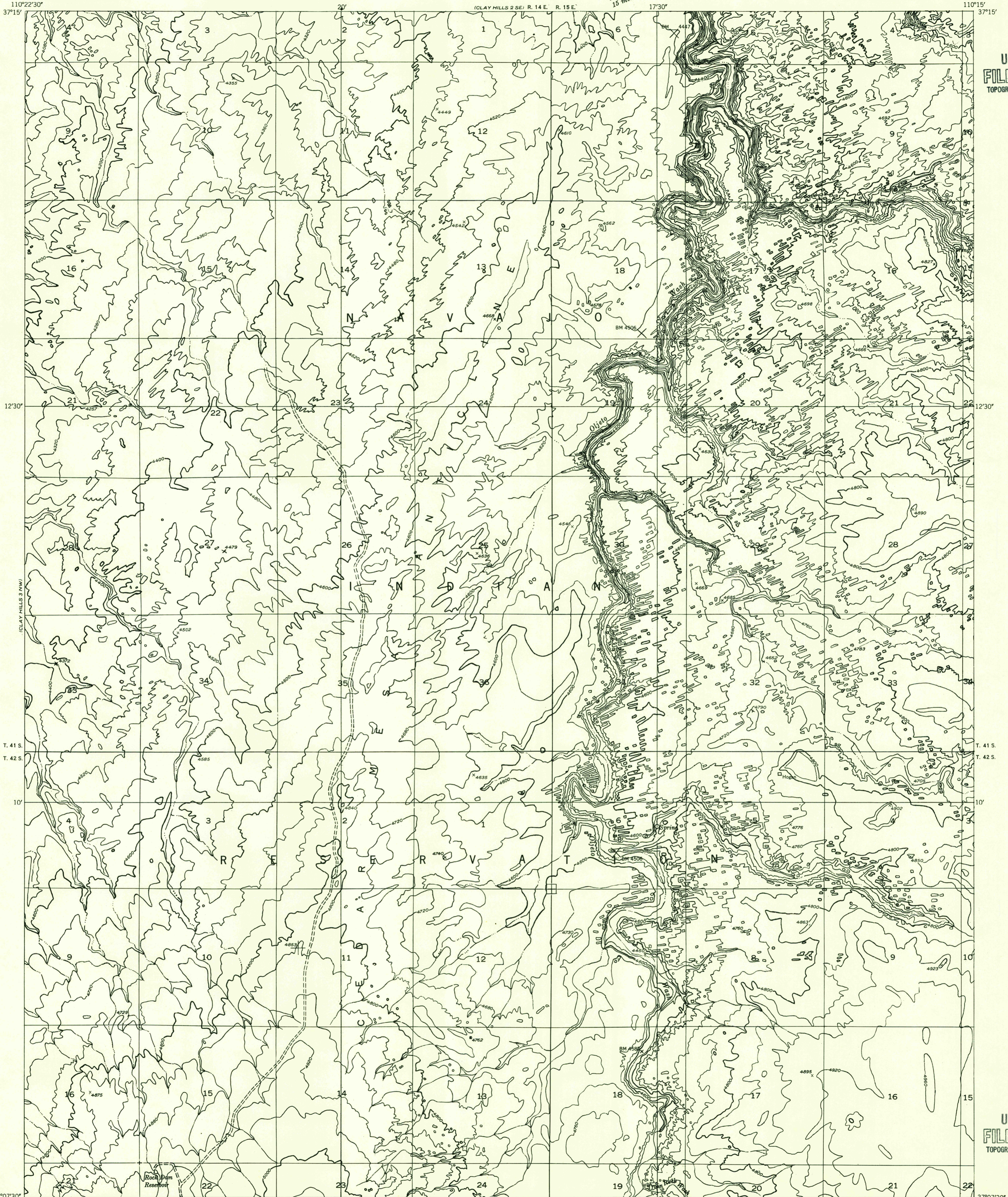


Preliminary edition
Pending completion of 1:62,500 scale
15 minute maps covering this area

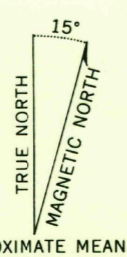


U.S.G.S.
FILE COPY
TOPOGRAPHIC DIVISION

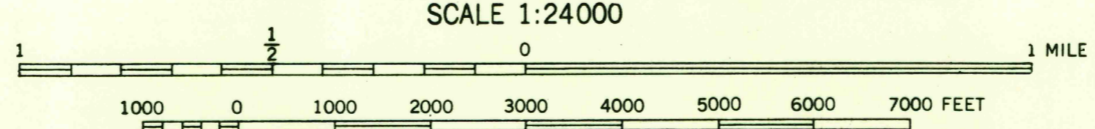
U.S.G.S.
FILE COPY
TOPOGRAPHIC DIVISION

37°07'30" 110°22'30" Mapped by the Geological Survey 1955

Topography by multiplex methods from
aerial photographs taken 1953



APPROXIMATE MEAN
DECLINATION, 1955



SCALE 1:24000

CONTOUR INTERVAL 40 FEET
DATUM IS MEAN SEA LEVEL

USGS
HISTORICAL FILE
TOPOGRAPHIC DIVISION

ROAD CLASSIFICATION

Improved ——— Unimproved - - - - -

CLAY HILLS 3 NE, UTAH
N3707.5W-11015/7.5

AUG 12 1955

2025