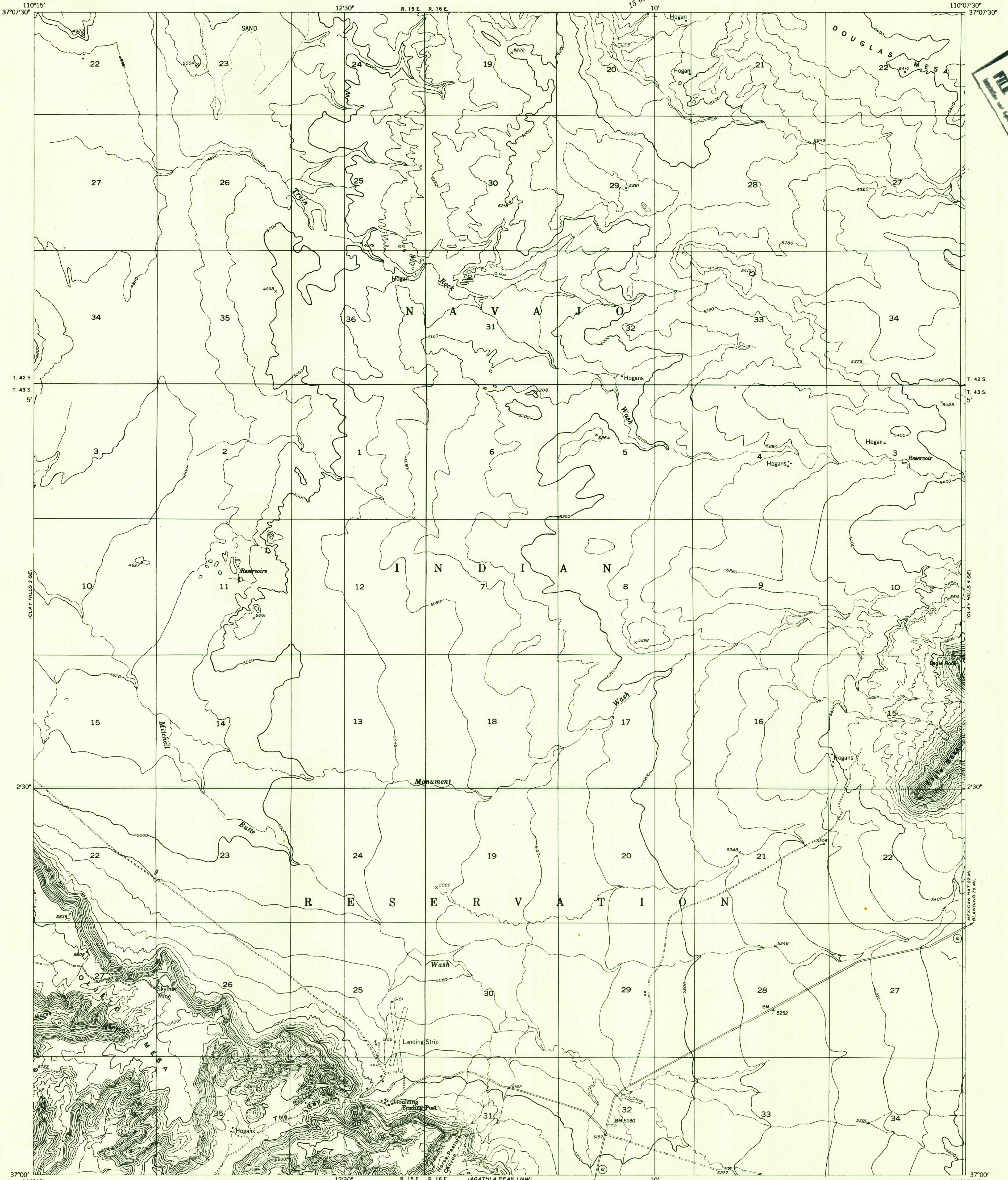


Preliminary edition
Pending completion of 1:62,500 scale
15 minute maps covering this area

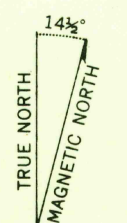


U.S.G.S.
FILE COPY

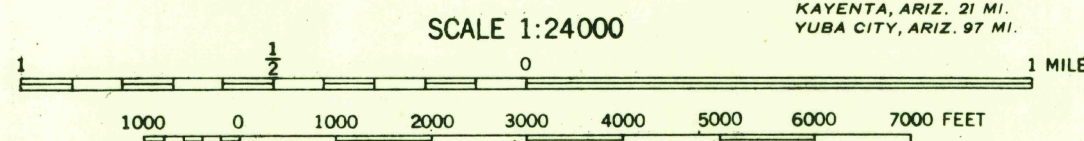
Mapped by the Geological Survey 1952

Topography by multiplex methods from
aerial photographs taken 1951

Data subject to minor corrections when
incorporated in a standard series map



APPROXIMATE MEAN
DECLINATION, 1952



CONTOUR INTERVAL 40 FEET
DATUM IS MEAN SEA LEVEL

U.S.G.S.
HISTORICAL FILE
TOPOGRAPHIC DIVISION

ROAD CLASSIFICATION
Improved ——— Unimproved - - - - -

U.S.G.S.
FILE COPY

CLAY HILLS 4 SW, UTAH
N3700-W11007.5/7.5