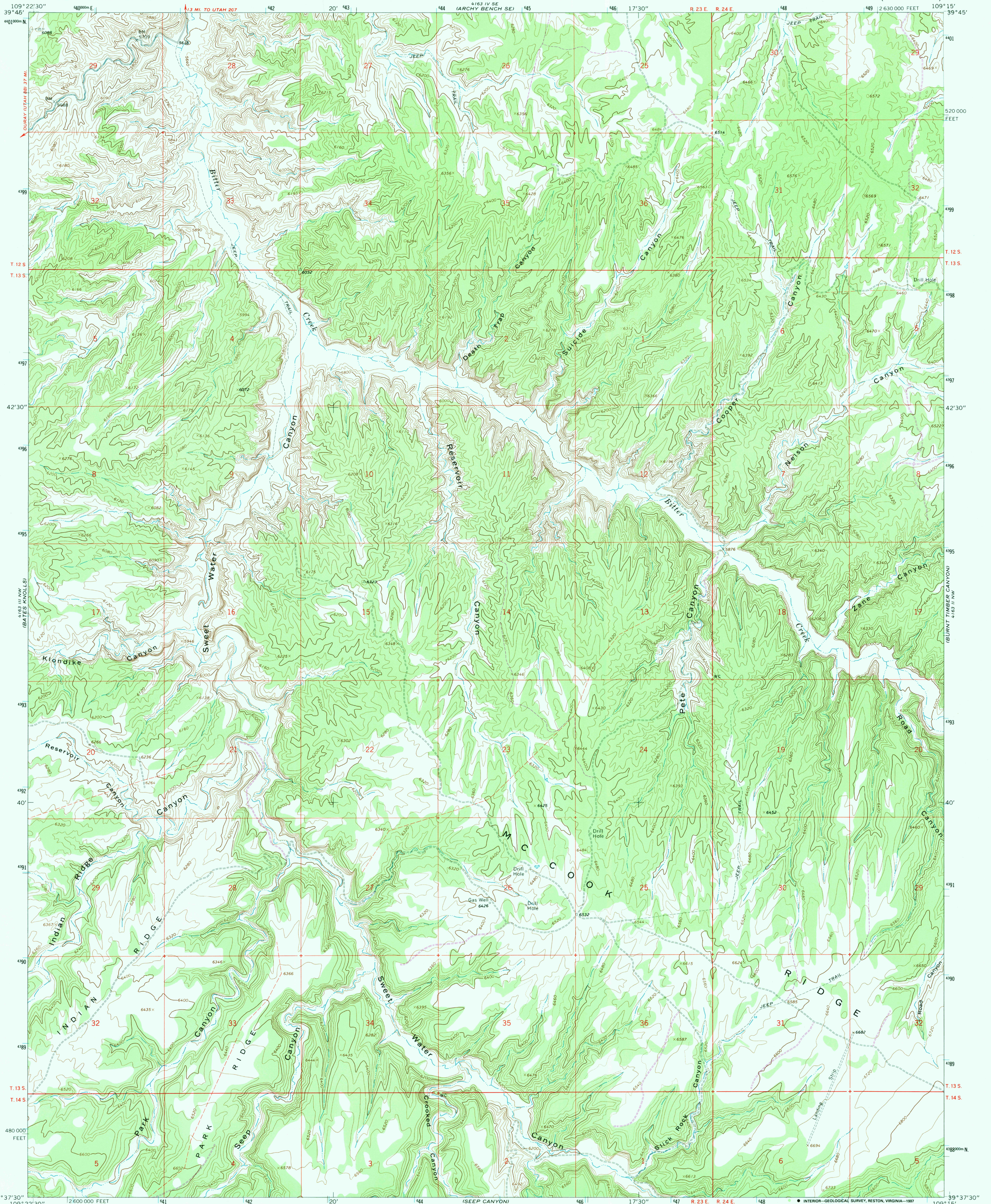


UNITED STATES
DEPARTMENT OF THE INTERIOR
GEOLOGICAL SURVEY

COOPER CANYON QUADRANGLE
UTAH—UINTAH CO.
7.5 MINUTE SERIES (TOPOGRAPHIC)



Mapped, edited, and published by the Geological Survey

Control by USGS and USC&GS

Topography by photogrammetric methods from aerial photographs taken 1965. Field checked 1966

Polyconic projection. 1927 North American datum

10,000-foot grid based on Utah coordinate system, central zone

1000-meter Universal Transverse Mercator grid ticks, zone 12, shown in blue

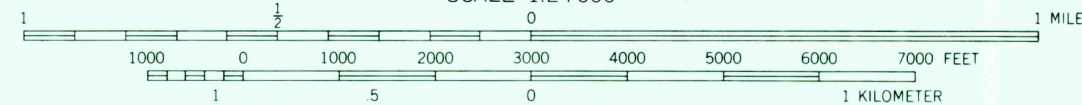
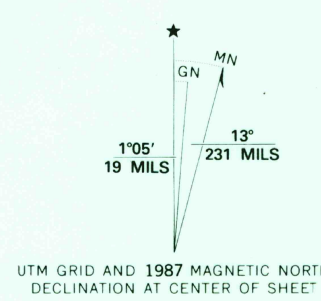
Fine red dashed lines indicate selected fence lines

To place on the predicted North American Datum 1983,

move the projection lines 7 meters north and

59 meters east as shown by dashed corner ticks

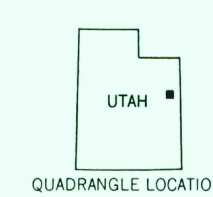
Revisions shown in purple compiled from aerial photographs taken 1983 and other sources. This information not field checked. Map edited 1987



CONTOUR INTERVAL 40 FEET

DOTTED LINES REPRESENT 20-FOOT CONTOURS

NATIONAL GEODETIC VERTICAL DATUM OF 1929



QUADRANGLE LOCATION

ROAD CLASSIFICATION

Light-duty ————— Unimproved dirt ————

THIS MAP COMPLIES WITH NATIONAL MAP ACCURACY STANDARDS
FOR SALE BY U. S. GEOLOGICAL SURVEY, DENVER, COLORADO 80225, OR RESTON, VIRGINIA 22092
A FOLDER DESCRIBING TOPOGRAPHIC MAPS AND SYMBOLS IS AVAILABLE ON REQUEST

COOPER CANYON, UTAH

39109-F3-TF-024

1966
PHOTOREVISED 1987
DMA 4163 III NE-SERIES V897

USGS GMD HISTORICAL MAP

JUN 09 1988

REC'D FILE COPY