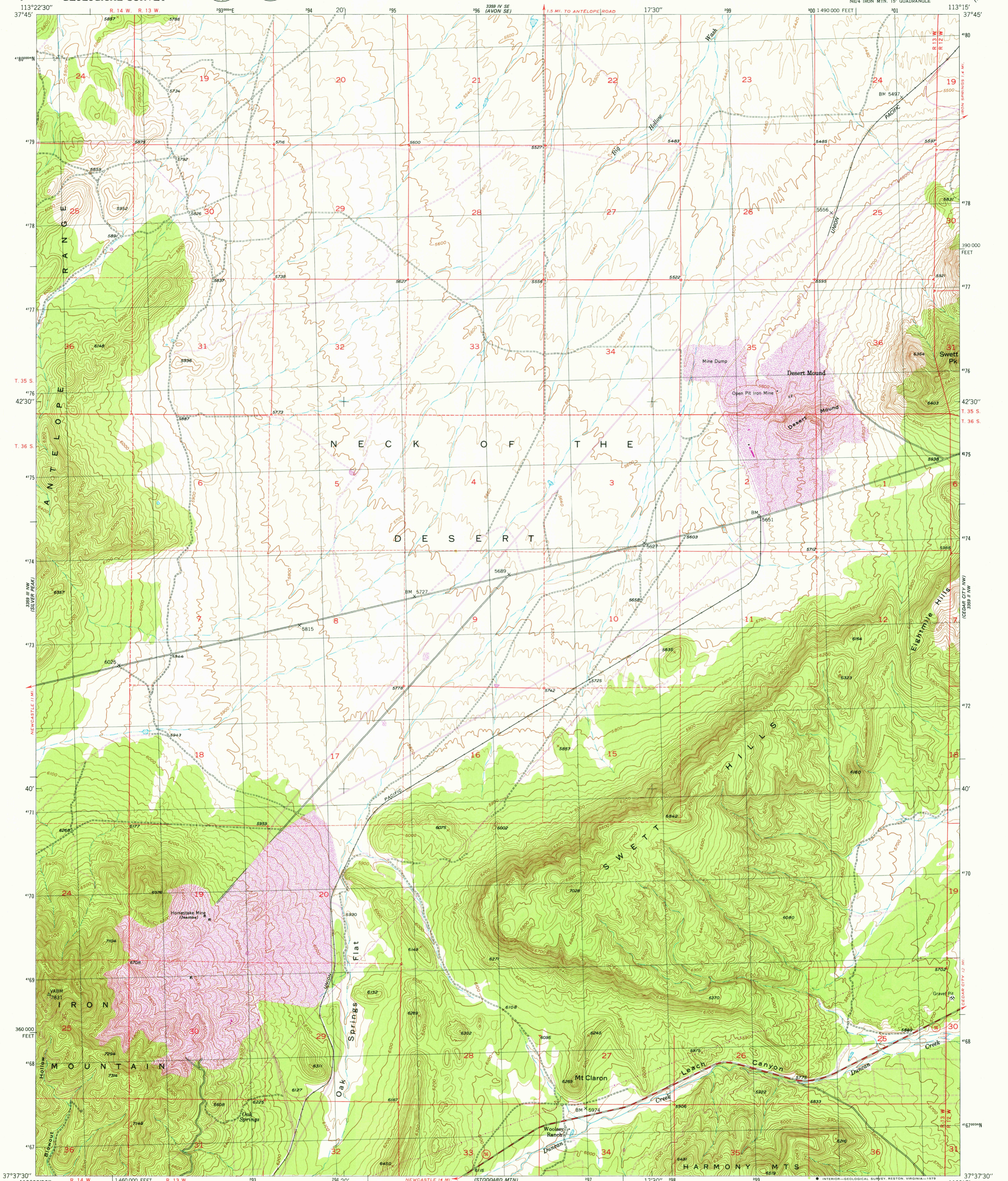
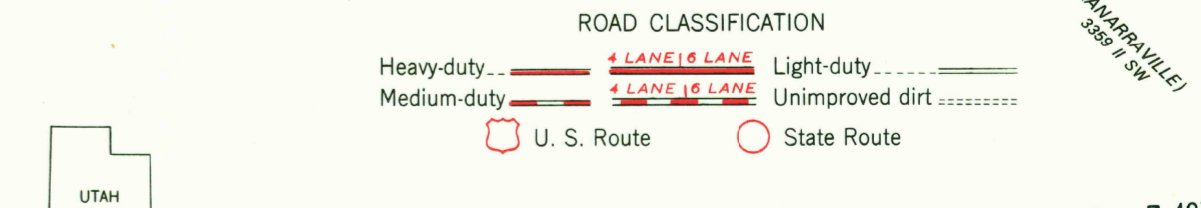
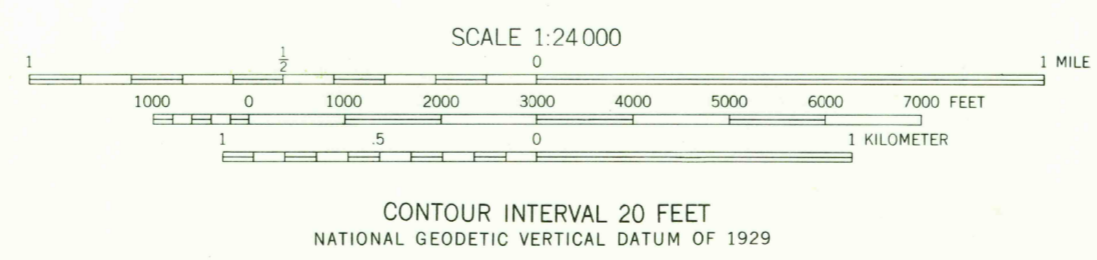
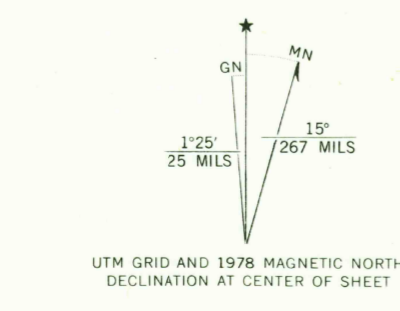




3359 IV NW
(THE THREE PEAKS)



Mapped, edited, and published by the Geological Survey
Control by USGS and NOS/NOAA
Topography from aerial photographs by multiplex methods
Aerial photographs taken 1948. Field check 1950
Polyconic projection. 1927 North American datum
10,000-foot grid based on Utah coordinate system,
south zone
Dashed land lines indicate approximate location
1000-meter Universal Transverse Mercator grid, zone 12
Revisions shown in purple and recompilation of wood land areas
compiled from aerial photographs taken 1976 and other source
data. This information not field checked. Map edited 1978



THIS MAP COMPLIES WITH NATIONAL MAP ACCURACY STANDARDS
FOR SALE BY U. S. GEOLOGICAL SURVEY, DENVER, COLORADO 80225, OR RESTON, VIRGINIA 22092
A FOLDER DESCRIBING TOPOGRAPHIC MAPS AND SYMBOLS IS AVAILABLE ON REQUEST

USGS
Historical File
Topographic Division
DESERT MOUND, UTAH
NE 4 IRON MTN. 15' QUADRANGLE
N3737.5-W11315/7.5
1950
PHOTO REVISIED 1978
DMA 3359 III NE-SERIES 9897

AUG 3 1979

2350