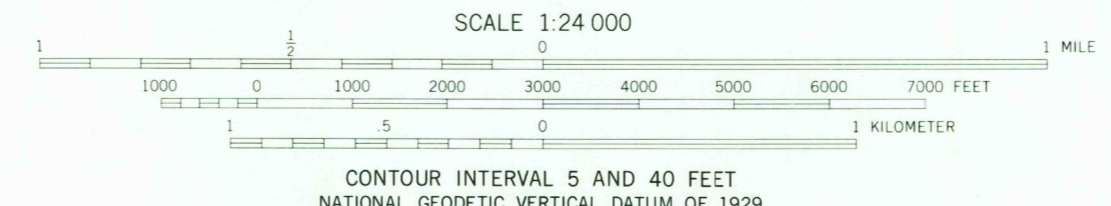
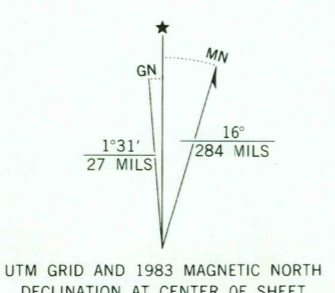
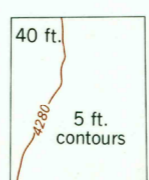




Mapped, edited, and published by the Geological Survey
Control by USGS and NOS/NOAA
Topography by photogrammetric methods from aerial photographs taken 1973. Field checked 1974. Map edited 1983
Projection and 10,000-foot grid ticks: Utah coordinate system, north zone (Lambert conformal conic) 1000-meter Universal Transverse Mercator grid, zone 12 1927 North American datum
To place on the predicted North American Datum 1983 move the projection lines 11 meters north and 69 meters east as shown by dashed corner ticks
Where omitted, land lines have not been established
There may be private inholdings within the boundaries of the National or State reservations shown on this map



CONTOUR INTERVAL 5 AND 40 FEET
NATIONAL GEODETIC VERTICAL DATUM OF 1929



QUADRANGLE LOCATION

ROAD CLASSIFICATION

Primary highway, hard surface	Light-duty road, hard or improved surface
Secondary highway, hard surface	Unimproved road
Interstate Route	U. S. Route
	State Route

DESERT PEAK, UTAH
N4107.5-W11315/7.5

1983
DMA 3366 III NE—SERIES V897

THIS MAP COMPLIES WITH NATIONAL MAP ACCURACY STANDARDS
FOR SALE BY U. S. GEOLOGICAL SURVEY, DENVER, COLORADO 80225, OR RESTON, VIRGINIA 22092
A FOLDER DESCRIBING TOPOGRAPHIC MAPS AND SYMBOLS IS AVAILABLE ON REQUEST

RETURN TO:
USGS AND HISTORICAL MAP ARCHIVES

NOV 23 1983

ROUND MOUNTAIN SW
3366 III SW
3366 III SW