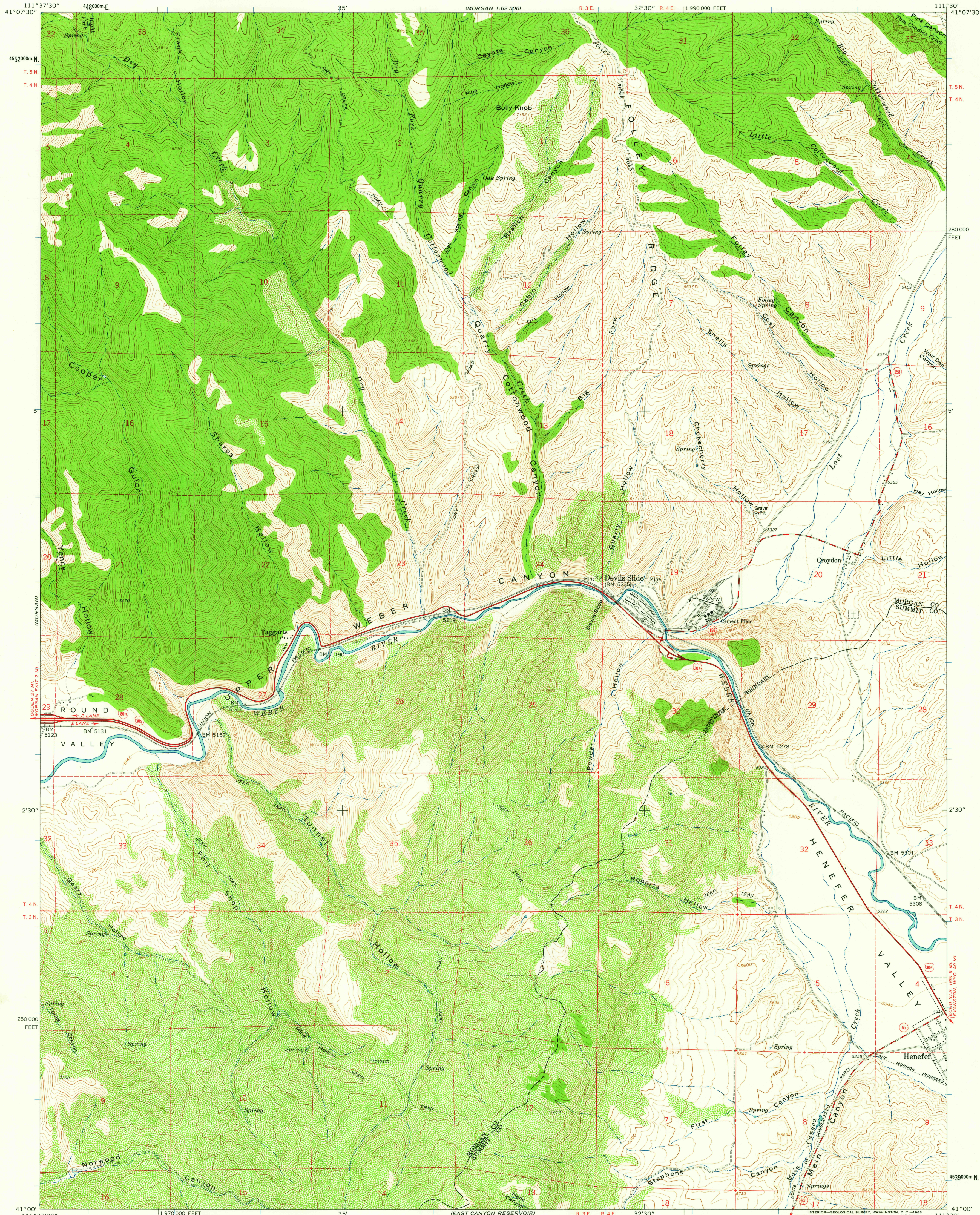


UNITED STATES
DEPARTMENT OF THE INTERIOR
GEOLOGICAL SURVEY

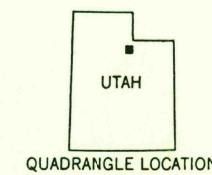
DEVILS SLIDE QUADRANGLE
UTAH
7.5 MINUTE SERIES (TOPOGRAPHIC)
SE/4 MORGAN 15' QUADRANGLE



Mapped, edited, and published by the Geological Survey
Control by USGS and USC&GS
Topography by photogrammetric methods from aerial
photographs taken 1956. Field checked 1961
Polyconic projection. 1927 North American datum
10,000-foot grid based on Utah coordinate system, north zone
1000-meter Universal Transverse Mercator grid ticks,
zone 12, shown in blue

TRUE NORTH
MAGNETIC NORTH
APPROXIMATE MEAN
DECLINATION, 1961

SCALE 1:24,000
1 1000 0 1000 2000 3000 4000 5000 6000 7000 FEET
1 KILOMETER
CONTOUR INTERVAL 40 FEET
DOTTED LINES REPRESENT 20-FOOT CONTOURS
DATUM IS MEAN SEA LEVEL



ROAD CLASSIFICATION
Heavy-duty ——— Light-duty ———
Medium-duty ——— Unimproved dirt ———
Interstate Route U.S. Route State Route

USGS
HISTORICAL FILE
TOPOGRAPHIC DIVISION

DEVILS SLIDE, UTAH
SE/4 MORGAN 15' QUADRANGLE
N4100—W11130/7.5
1961

THIS MAP COMPLIES WITH NATIONAL MAP ACCURACY STANDARDS
FOR SALE BY U.S. GEOLOGICAL SURVEY, DENVER 25, COLORADO OR WASHINGTON 25, D.C.
A FOLDER DESCRIBING TOPOGRAPHIC MAPS AND SYMBOLS IS AVAILABLE ON REQUEST

FEB 15 1963

2190