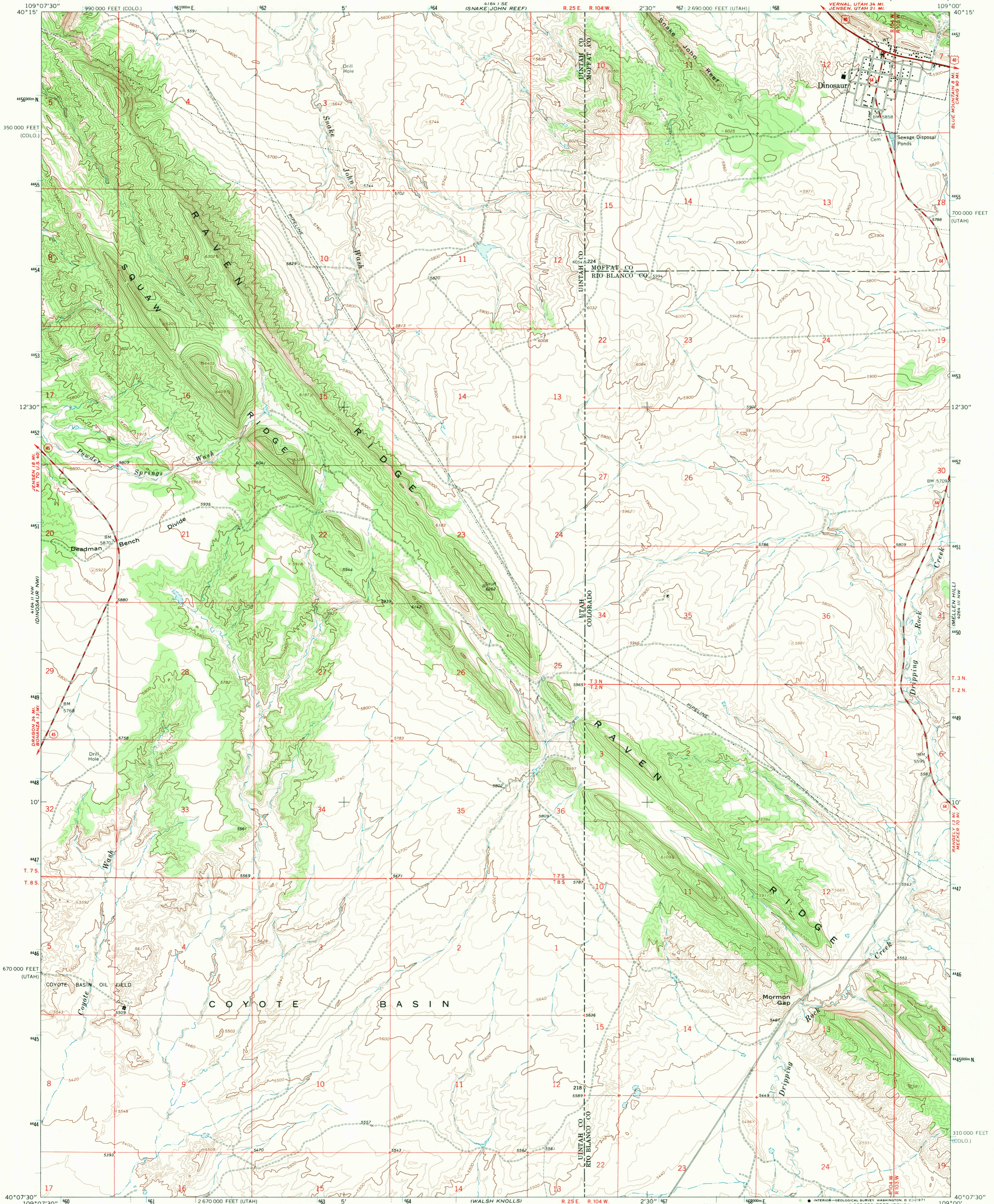
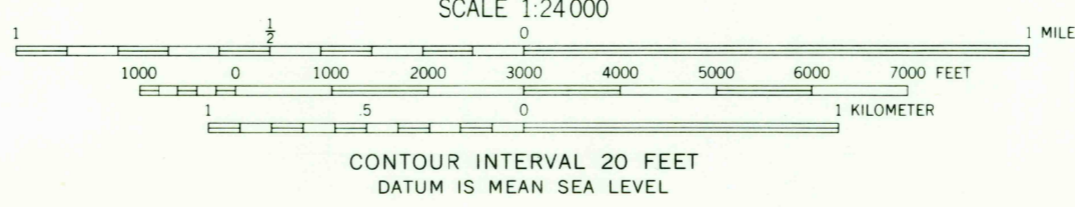
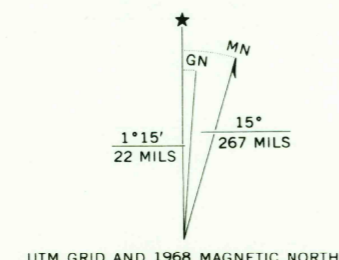


UNITED STATES  
DEPARTMENT OF THE INTERIOR  
GEOLOGICAL SURVEY

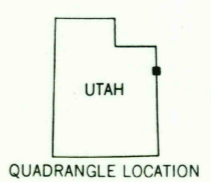
DINOSAUR QUADRANGLE  
UTAH-COLORADO  
7.5 MINUTE SERIES (TOPOGRAPHIC)



Mapped, edited, and published by the Geological Survey  
Control by USGS and USC&GS  
Topography by photogrammetric methods from aerial photographs taken 1965. Field checked 1968  
Polyconic projection. 1927 North American datum  
10,000-foot grids based on Utah coordinate system, central zone, and Colorado coordinate system, north zone  
1000-meter Universal Transverse Mercator grid ticks, zone 12, shown in blue



USGS  
HISTORICAL FILE  
TOPOGRAPHIC DIVISION



ROAD CLASSIFICATION

Primary highway, all weather, hard surface	Light-duty road, all weather, improved surface
Secondary highway, all weather, hard surface	Unimproved road, fair or dry weather
U. S. Route	State Route

THIS MAP COMPLIES WITH NATIONAL MAP ACCURACY STANDARDS  
FOR SALE BY U. S. GEOLOGICAL SURVEY, DENVER, COLORADO 80225, OR WASHINGTON, D. C. 20242  
A FOLDER DESCRIBING TOPOGRAPHIC MAPS AND SYMBOLS IS AVAILABLE ON REQUEST

DINOSAUR, UTAH-COLO.  
N4007.5-W10900/7.5  
1968  
AMS 4164 II NE-SERIES B987

MAR 3 1971  
U.S.G.S.  
FILE COPY  
TOPOGRAPHIC DIVISION

2800