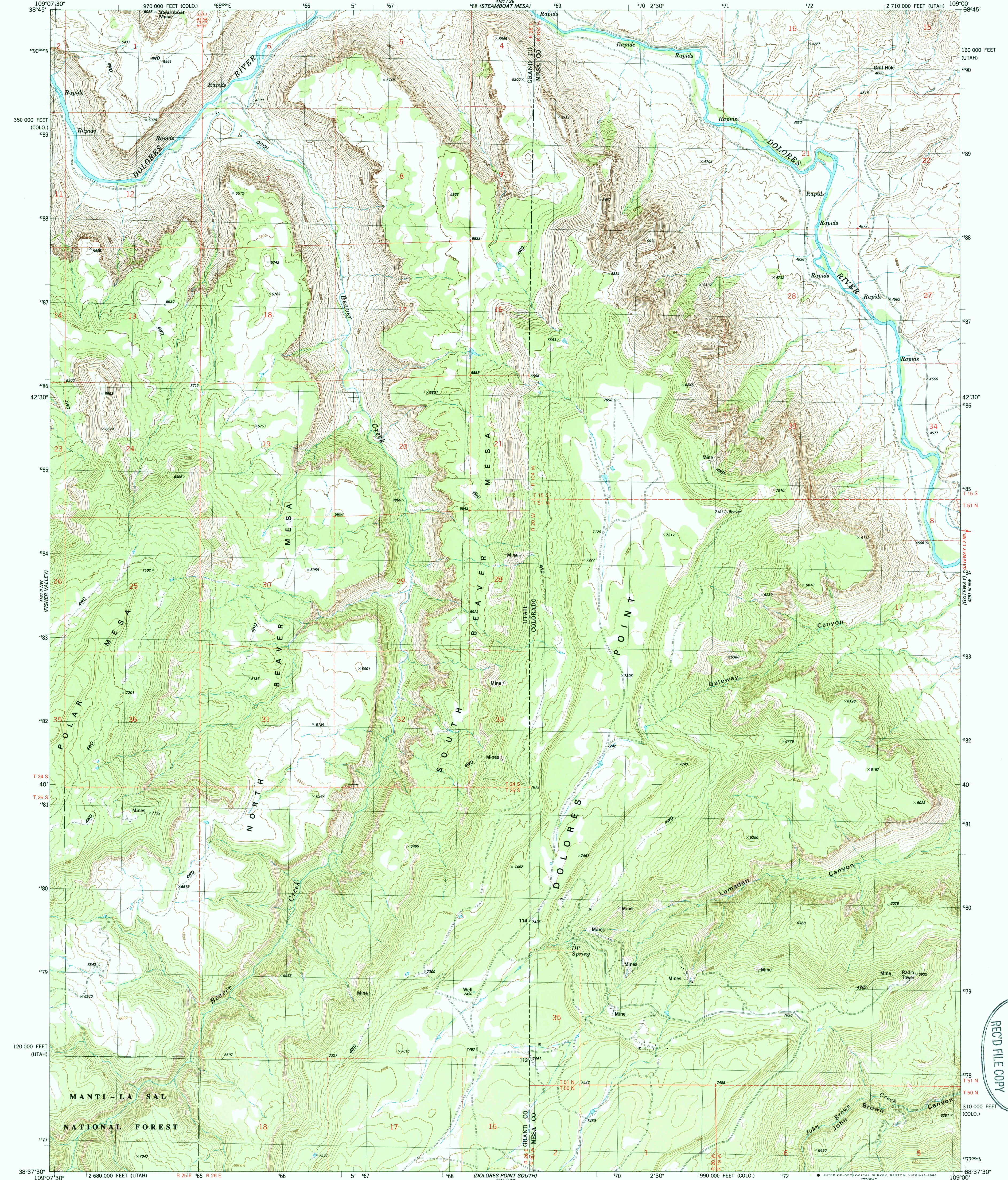


UNITED STATES  
DEPARTMENT OF THE INTERIOR  
GEOLOGICAL SURVEY

DOLORES POINT NORTH QUADRANGLE  
UTAH-COLORADO  
7.5 MINUTE SERIES (TOPOGRAPHIC)  
NE/4 POLAR MESA 15' QUADRANGLE



Mapped, edited, and published by the Geological Survey

Control by USGS and NOS/NOAA  
Topography by photogrammetric methods from aerial photographs  
taken 1980. Field checked 1981. Map edited 1985

Projection: Utah coordinate system, central zone  
(Lambert conformal conic)

10,000-foot grid ticks based on Utah coordinate system,  
central zone and Colorado coordinate system, central zone

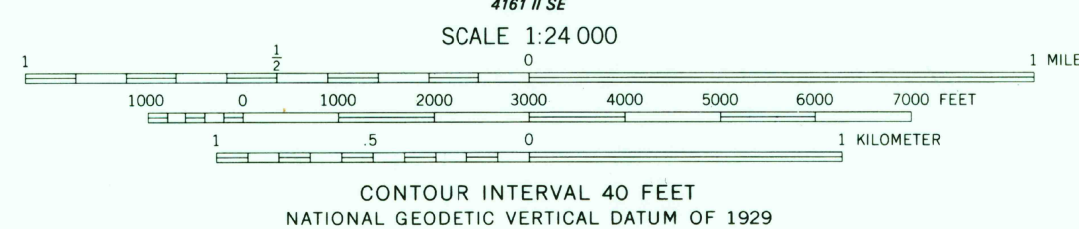
1000-meter Universal Transverse Mercator grid, zone 12  
1927 North American Datum

To place on the predicted North American Datum 1983  
move the projection lines 5 meters north and  
58 meters east as shown by dashed corner ticks

Where omitted, land lines have not been established or  
are not shown because of insufficient data

Fine red dashed lines indicate selected fence lines

There may be private inholdings within the boundaries of  
the National or State reservations shown on this map



THIS MAP COMPLIES WITH NATIONAL MAP ACCURACY STANDARDS  
FOR SALE BY U. S. GEOLOGICAL SURVEY, DENVER, COLORADO 80225 OR RESTON, VIRGINIA 22092  
A FOLDER DESCRIBING TOPOGRAPHIC MAPS AND SYMBOLS IS AVAILABLE ON REQUEST



ROAD CLASSIFICATION	
Primary highway, hard surface	Light-duty road, hard or improved surface
Secondary highway, hard surface	Unimproved road
Interstate Route	U. S. Route
	State Route

DOLORES POINT NORTH, UTAH-COLO.  
NE/4 POLAR MESA 15' QUADRANGLE  
38109-F1-TF-024

1985

DMA 4161 II NE-SERIES V897

USGS AND HISTORICAL MAP  
FEB 20 1986  
REC'D FILE COPY