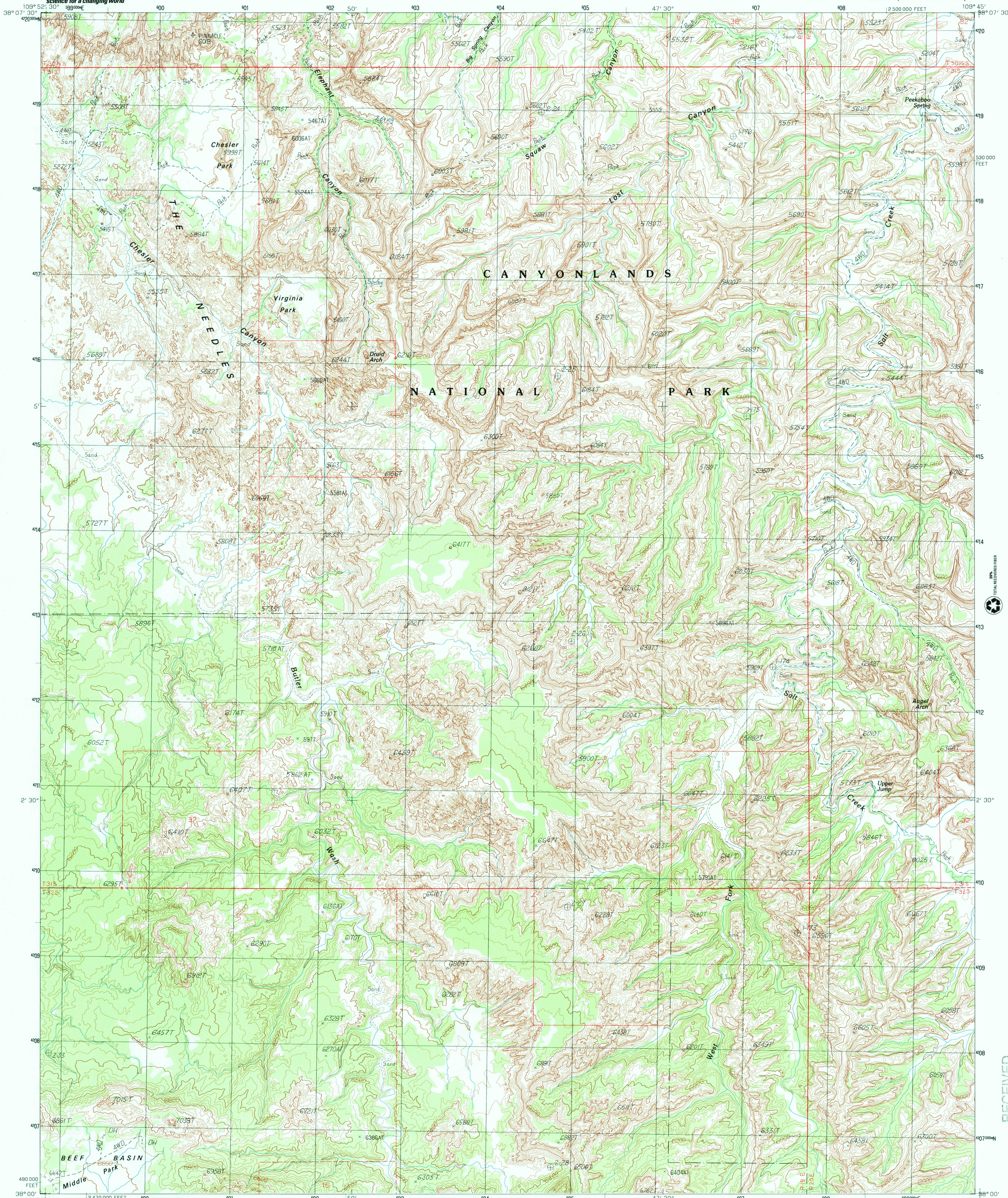




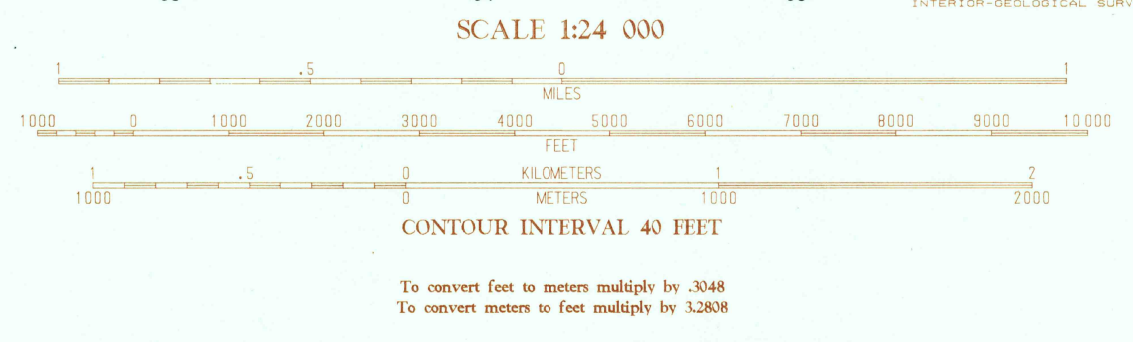
U.S. DEPARTMENT OF THE INTERIOR
U.S. GEOLOGICAL SURVEY

DRUID ARCH QUADRANGLE
UTAH-SAN JUAN CO.
7.5 MINUTE SERIES (TOPOGRAPHIC)



PRODUCED BY THE UNITED STATES GEOLOGICAL SURVEY
CONTROL BY USGS 50690A
COMPILED FROM AERIAL PHOTOGRAPHS TAKEN 1981
FIELD CHECKED 1983 MAP EDITED 1988
PROJECTION LAMBERT CONFORMAL CONIC
GRID: 100-METER UNIVERSAL TRANSVERSE MERCATOR ZONE 12
UTM GRID STATE GRID TICKS UTILITY SOUTH ZONE
UTM GRID DECLINATION 9° 44' EAST
1988 MAGNETIC NORTH DECLINATION 13' EAST
VERTICAL DATUM NATIONAL GEODETIC VERTICAL DATUM OF 1929
HORIZONTAL DATUM 1983 NORTH AMERICAN DATUM
To place on the predicted North American Datum of 1983,
move the projection lines as shown by dashed corner ticks
(5 meters north and 60 meters east)
There may be private inholdings within the boundaries of any
Federal and State Reservations shown on this map
Where omitted, land lines have not been established

PROVISIONAL MAP
Produced from original
manuscript drawings. Informa-
tion shown as of date of
photography.



ROAD LEGEND

Improved Road
Unimproved Road
Trail

Interstate Route U.S. Route State Route

DRUID ARCH, UTAH
PROVISIONAL EDITION 1988

38109-A7-TF-024

1	2	3	1	Spanish Bottom
2	3	4	2	The Loop
3	4	5	3	North Side-Shooter Peak
4	5	6	4	Cron Canyon
5	6	7	5	South Side-Shooter Peak
6	7	8	6	Fable Valley
7	8		7	House Park Butte
8			8	Cathedral Dome

ADJOINING 7.5' QUADRANGLE NAMES

RECEIVED
APR 30 2001
USGS INFO
HISTORICAL MAP ARCHIVES

