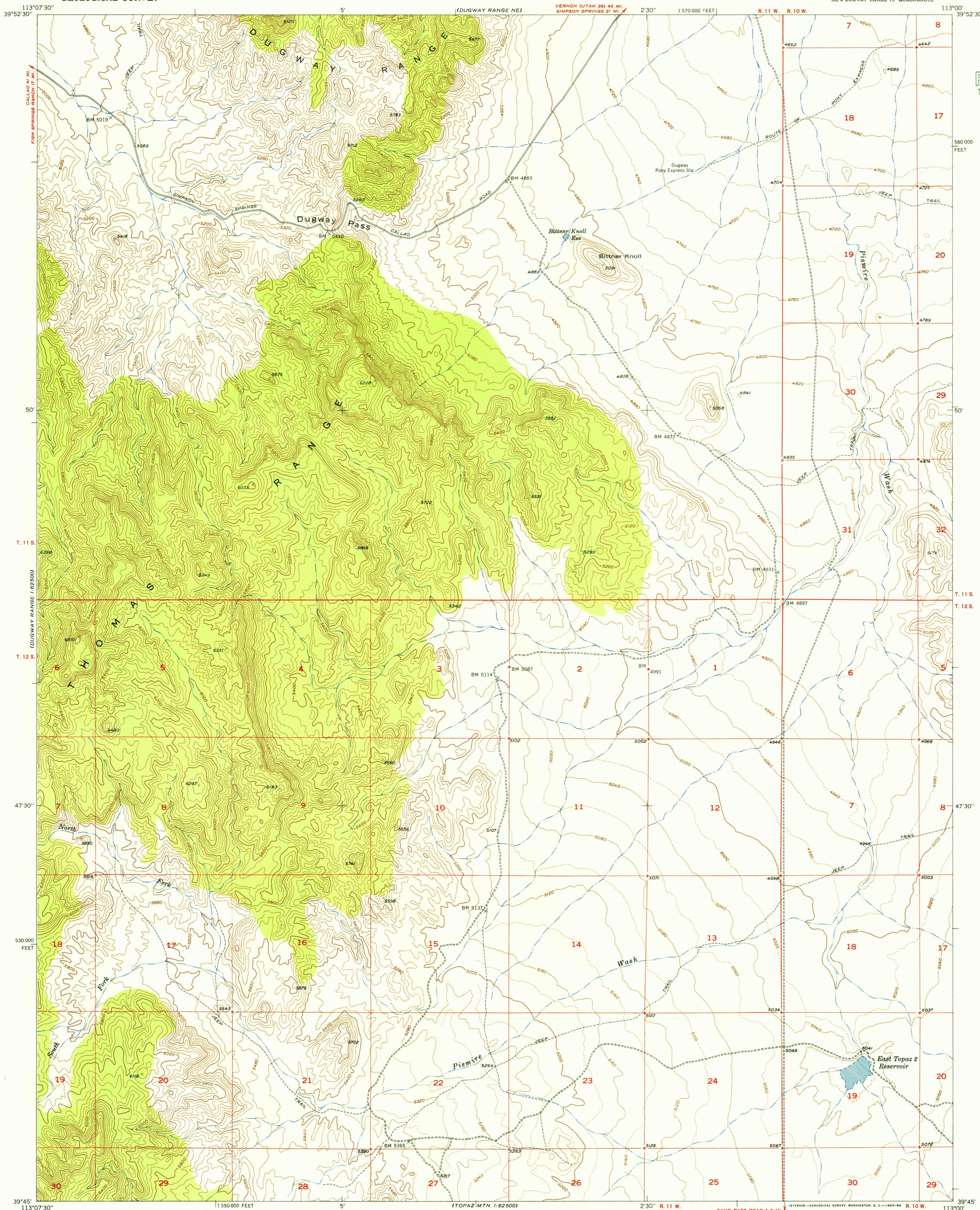


U.S.G.S.
FILE COPY
TOPOGRAPHIC DIVISION



560 000
FEET

T. 11 S.
T. 12 S.

47 30"

530 000
FEET

39° 45'

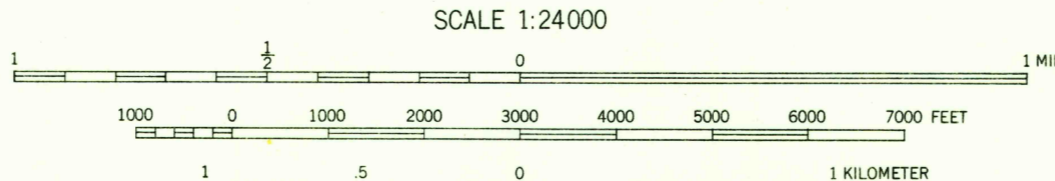
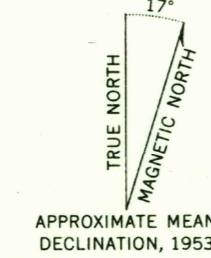
T. 11 S.
T. 12 S.

47 30"

39° 45'

Mapped, edited, and published by the Geological Survey

Control by USGS and US&GS
Topography from aerial photographs by multiplex methods
and by plane-table surveys 1953. Aerial photographs taken 1951
Polyconic projection. 1927 North American datum
10,000-foot grid based on Utah coordinate system, central zone



CONTOUR INTERVAL 40 FEET
DASHED LINES REPRESENT HALF-INTERVAL CONTOURS
DATUM IS MEAN SEA LEVEL

USGS
HISTORICAL FILE
TOPOGRAPHIC DIVISION



ROAD CLASSIFICATION
Heavy-duty 2 LANE 6 LANE Light-duty
Medium-duty 2 LANE 6 LANE Unimproved dirt
U. S. Route Slate Route

DUGWAY PASS, UTAH
SE/4 DUGWAY RANGE 15' QUADRANGLE
N3945—W11300/7.5

U.S.G.S.
FILE COPY
TOPOGRAPHIC DIVISION

THIS MAP COMPLIES WITH NATIONAL MAP ACCURACY STANDARDS
FOR SALE BY U. S. GEOLOGICAL SURVEY, FEDERAL CENTER, DENVER, COLORADO OR WASHINGTON 25, D. C.
A FOLDER DESCRIBING TOPOGRAPHIC MAPS AND SYMBOLS IS AVAILABLE ON REQUEST

1953

FEB 11 1955