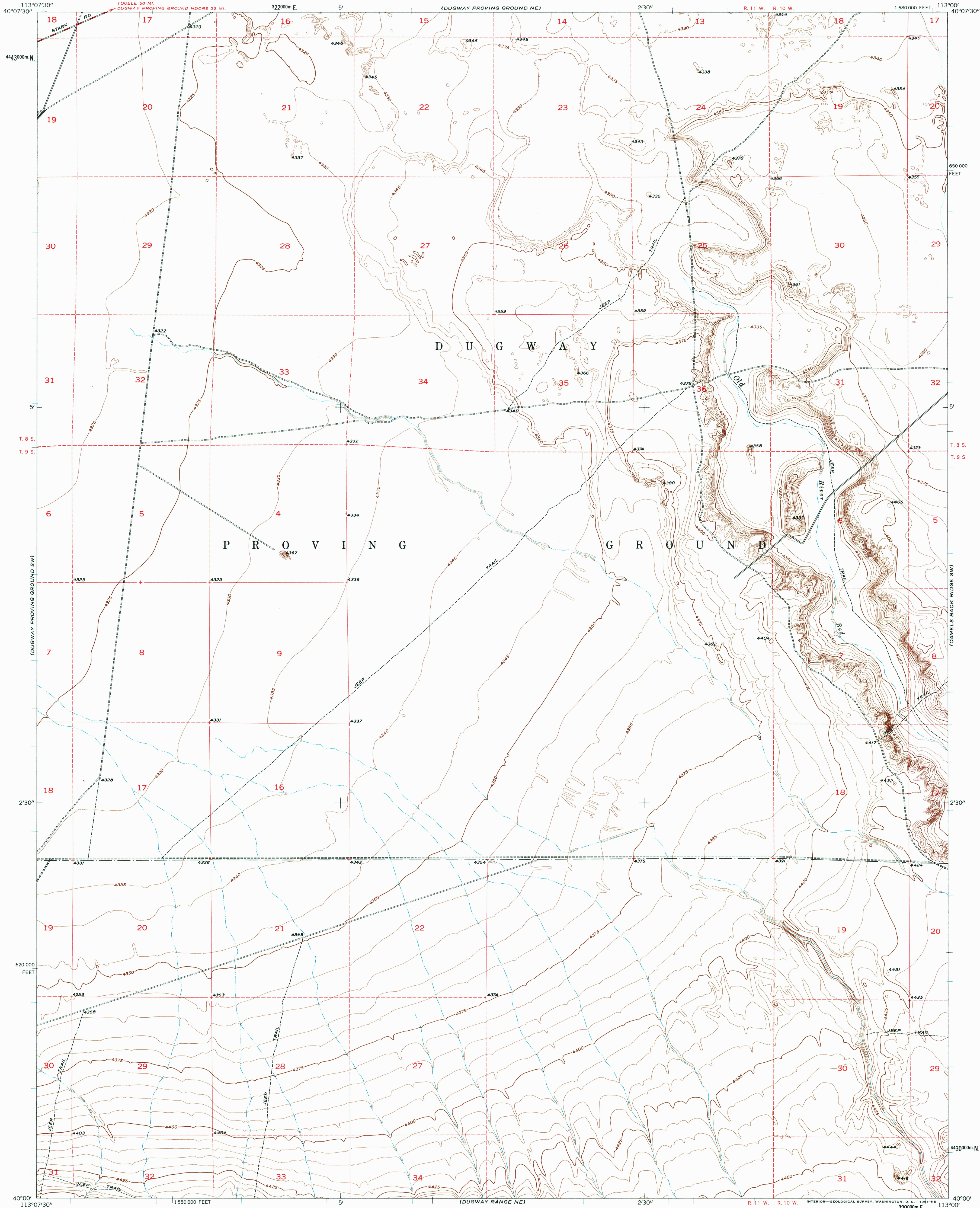
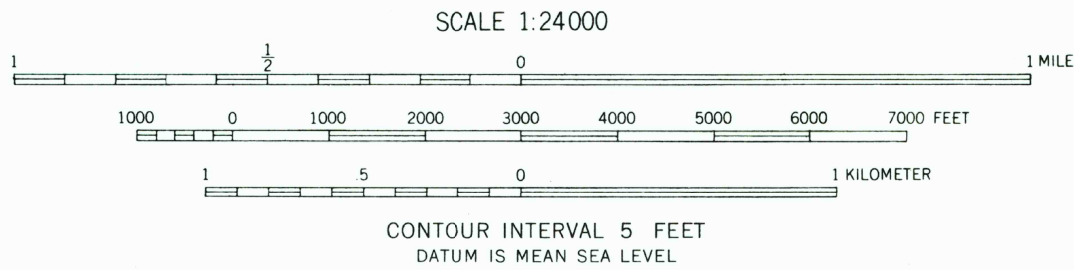
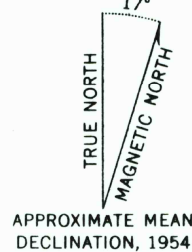


UNITED STATES  
DEPARTMENT OF THE INTERIOR  
GEOLOGICAL SURVEY

DUGWAY PROVING GROUND SE QUADRANGLE  
UTAH—TOOELE CO.  
7.5 MINUTE SERIES (TOPOGRAPHIC)



Mapped, edited, and published by the Geological Survey  
Control by USGS and USC&GS  
Culture and drainage compiled from aerial photographs  
taken 1953. Topography by plane-table methods 1954  
Polyconic projection. 1927 North American datum  
10,000-foot grid based on Utah coordinate system, central zone  
1000-meter Universal Transverse Mercator grid ticks,  
zone 12, shown in blue  
Dashed land lines indicate approximate locations



ROAD CLASSIFICATION  
Medium-duty ——— Light-duty ———  
Unimproved dirt =

DUGWAY PROVING GROUND SE, UTAH  
N 4000—W 11300/7.5

1954

THIS MAP COMPLIES WITH NATIONAL MAP ACCURACY STANDARDS  
FOR SALE BY U. S. GEOLOGICAL SURVEY, DENVER 25, COLORADO OR WASHINGTON 25, D. C.  
A FOLDER DESCRIBING TOPOGRAPHIC MAPS AND SYMBOLS IS AVAILABLE ON REQUEST

RETURN TO:  
USGS AND HISTORICAL MAP ARCHIVES

APR 11 1983  
F. MTN.