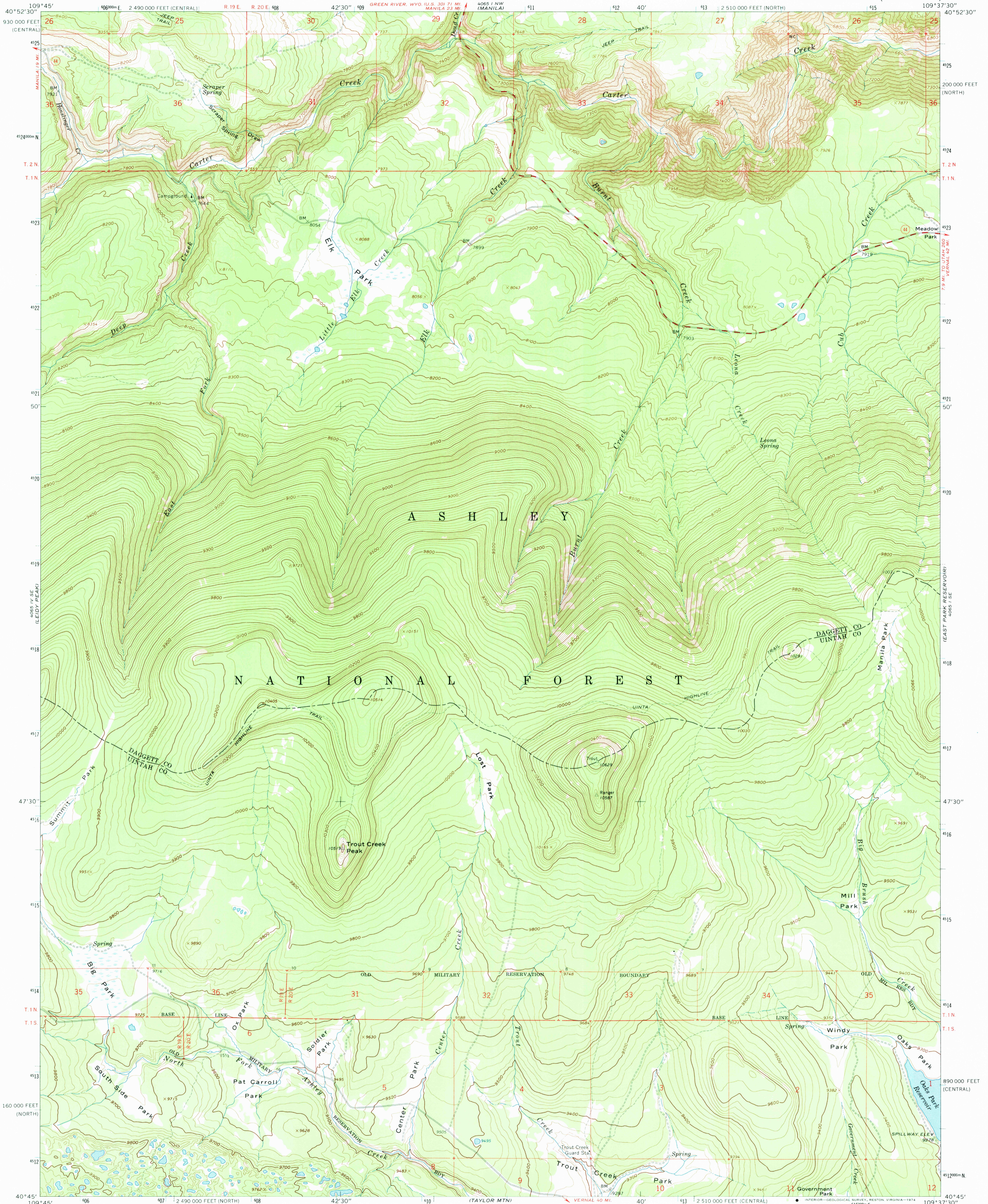


UNITED STATES
DEPARTMENT OF THE INTERIOR
GEOLOGICAL SURVEY

ELK PARK QUADRANGLE
UTAH
7.5 MINUTE SERIES (TOPOGRAPHIC)



Mapped, edited, and published by the Geological Survey

Control by USGS and USC&GS

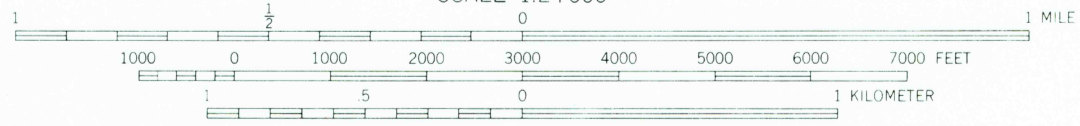
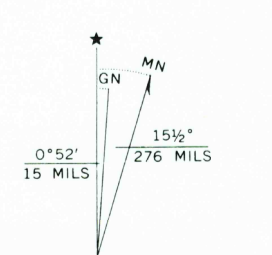
Topography by photogrammetric methods from aerial photographs taken 1959. Field checked 1963

Polyconic projection. 1927 North American datum 10,000-foot grids based on Utah coordinate system, north and central zones

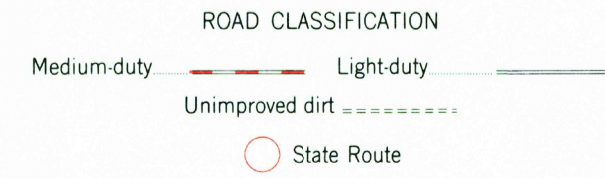
1000-meter Universal Transverse Mercator grid ticks, zone 12, shown in blue

Where omitted, land lines have not been established

Fine red dashed lines indicate selected fence lines



CONTOUR INTERVAL 20 FEET
DATUM IS MEAN SEA LEVEL



THIS MAP COMPLIES WITH NATIONAL MAP ACCURACY STANDARDS
FOR SALE BY U. S. GEOLOGICAL SURVEY, DENVER, COLORADO 80225, OR RESTON, VIRGINIA 22092
A FOLDER DESCRIBING TOPOGRAPHIC MAPS AND SYMBOLS IS AVAILABLE ON REQUEST

ELK PARK, UTAH
N4045-W10937.5/7.5

1963

AMS 4065 1 SW—SERIES V897

FEB 25 1974

3260