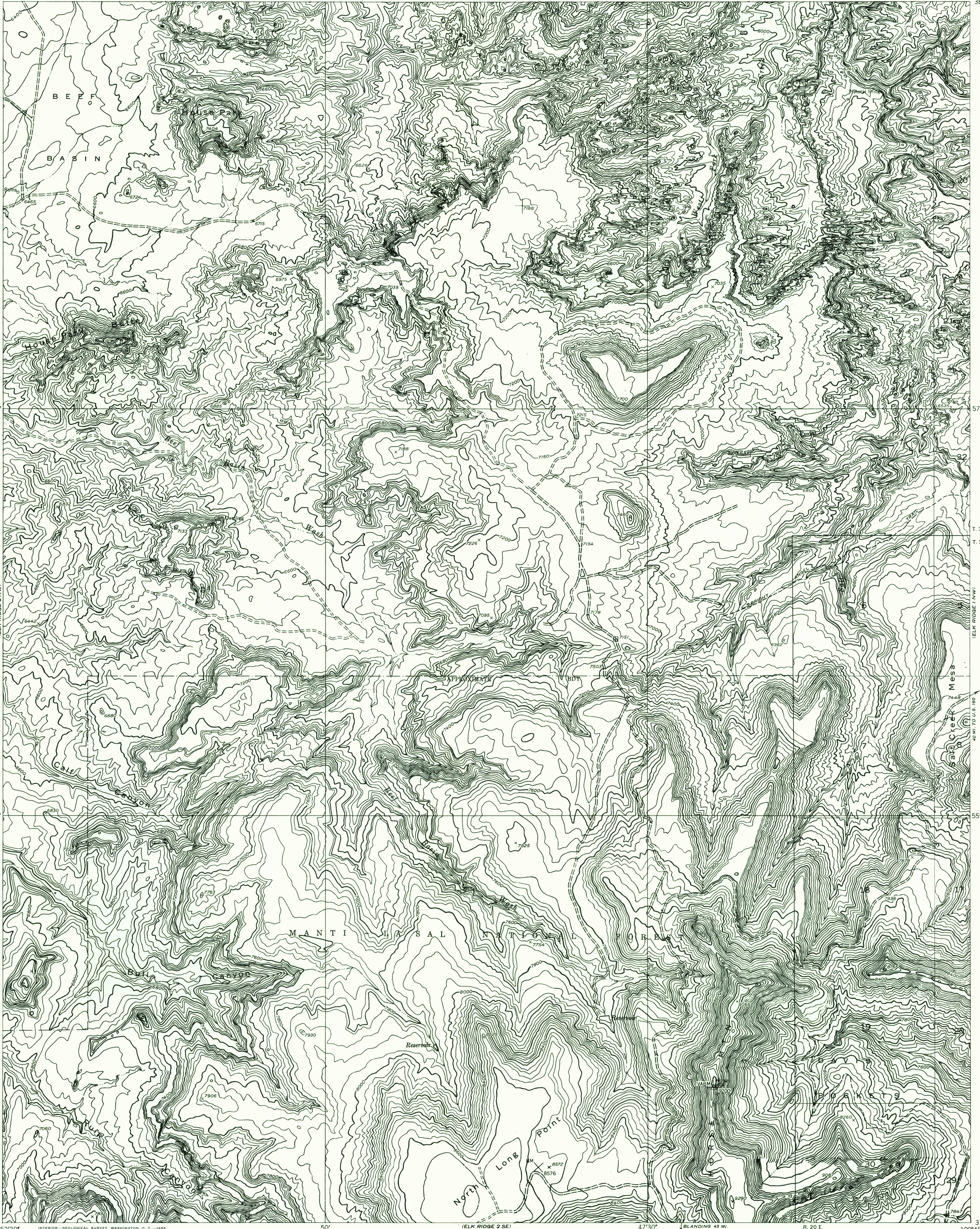
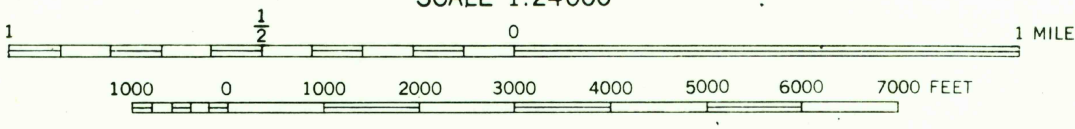
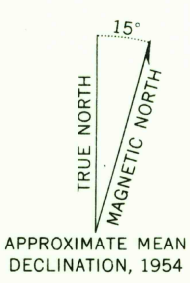


U.S.G.S.
FILE COPY
TOPOGRAPHIC DIVISION



37°52'30" 109°52'30" INTERIOR—GEOLOGICAL SURVEY, WASHINGTON, D. C.—1955

Mapped by the Geological Survey 1954
Topography by multiplex methods from
aerial photographs taken 1952



CONTOUR INTERVAL 40 FEET
DATUM IS MEAN SEA LEVEL

USGS
HISTORICAL FILE
TOPOGRAPHIC DIVISION

ROAD CLASSIFICATION
Improved ——— Unimproved - - - - -

ELK RIDGE 2 NE, UTAH
N3752.5—W10945/7.5

JUL 15 1955

2050