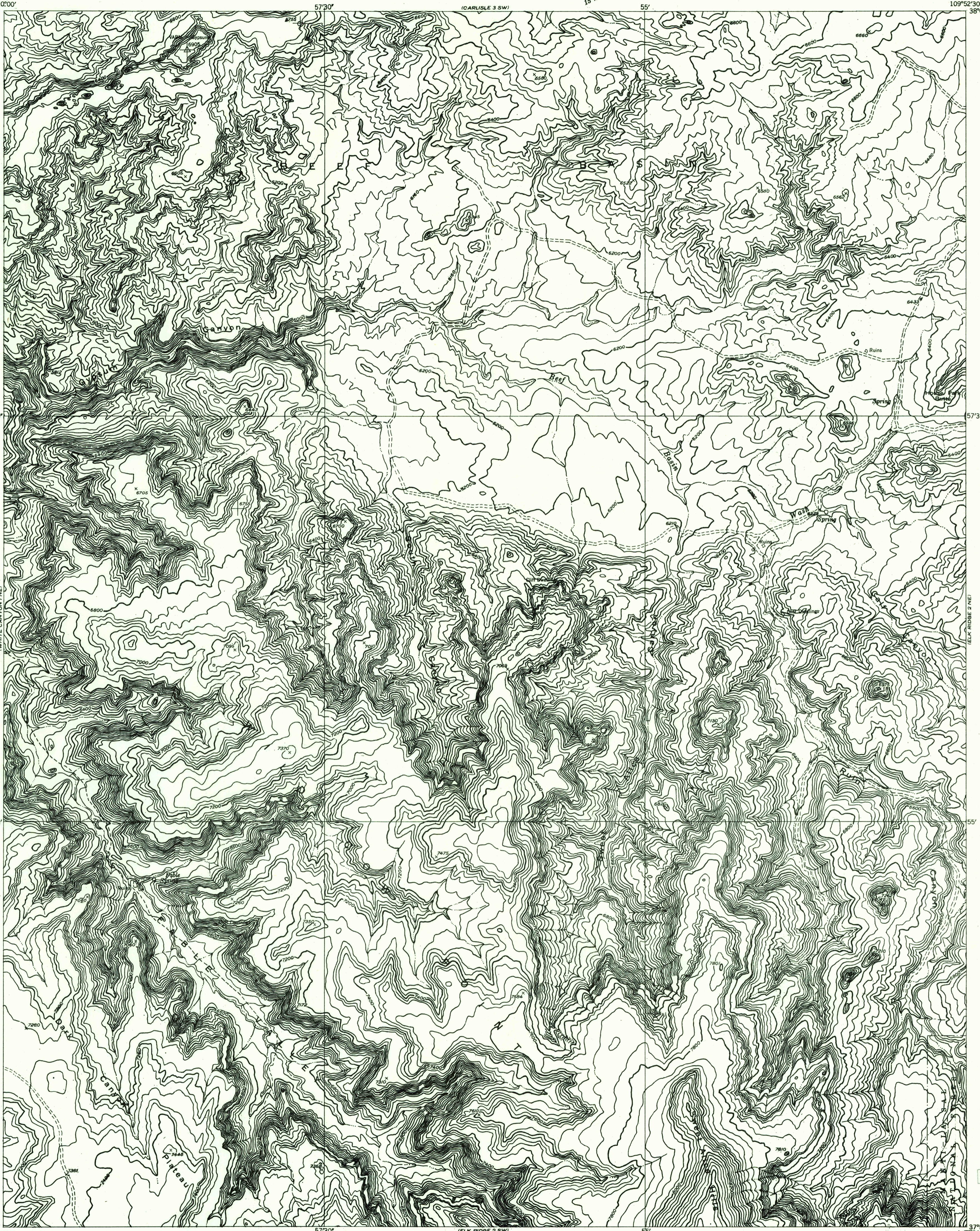
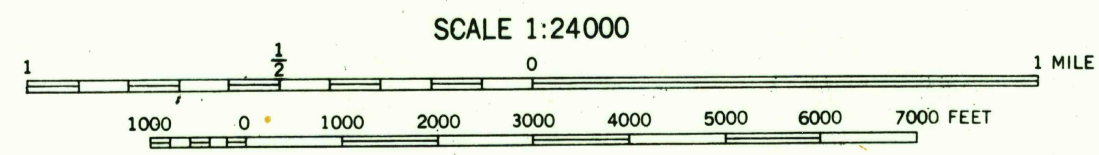
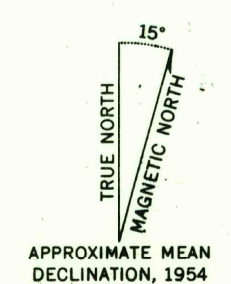


Preliminary edition  
Pending completion of 1:62,500 scale  
15 minute maps covering this area

U.S.G.S.  
FILE COPY  
TOPOGRAPHIC DIVISION



110°00' 37°52'30"  
110°00' Mapped by the Geological Survey 1954  
Topography by multiplex methods from  
aerial photographs taken 1952



USGS  
HISTORICAL FILE  
TOPOGRAPHIC DIVISION

ROAD CLASSIFICATION  
Improved ——— Unimproved - - - - -

CONTOUR INTERVAL 40 FEET  
DATUM IS MEAN SEA LEVEL

ELK RIDGE 2 NW, UTAH  
N3752.5-W10952.5/7.5

U.S.G.S.  
FILE COPY  
TOPOGRAPHIC DIVISION