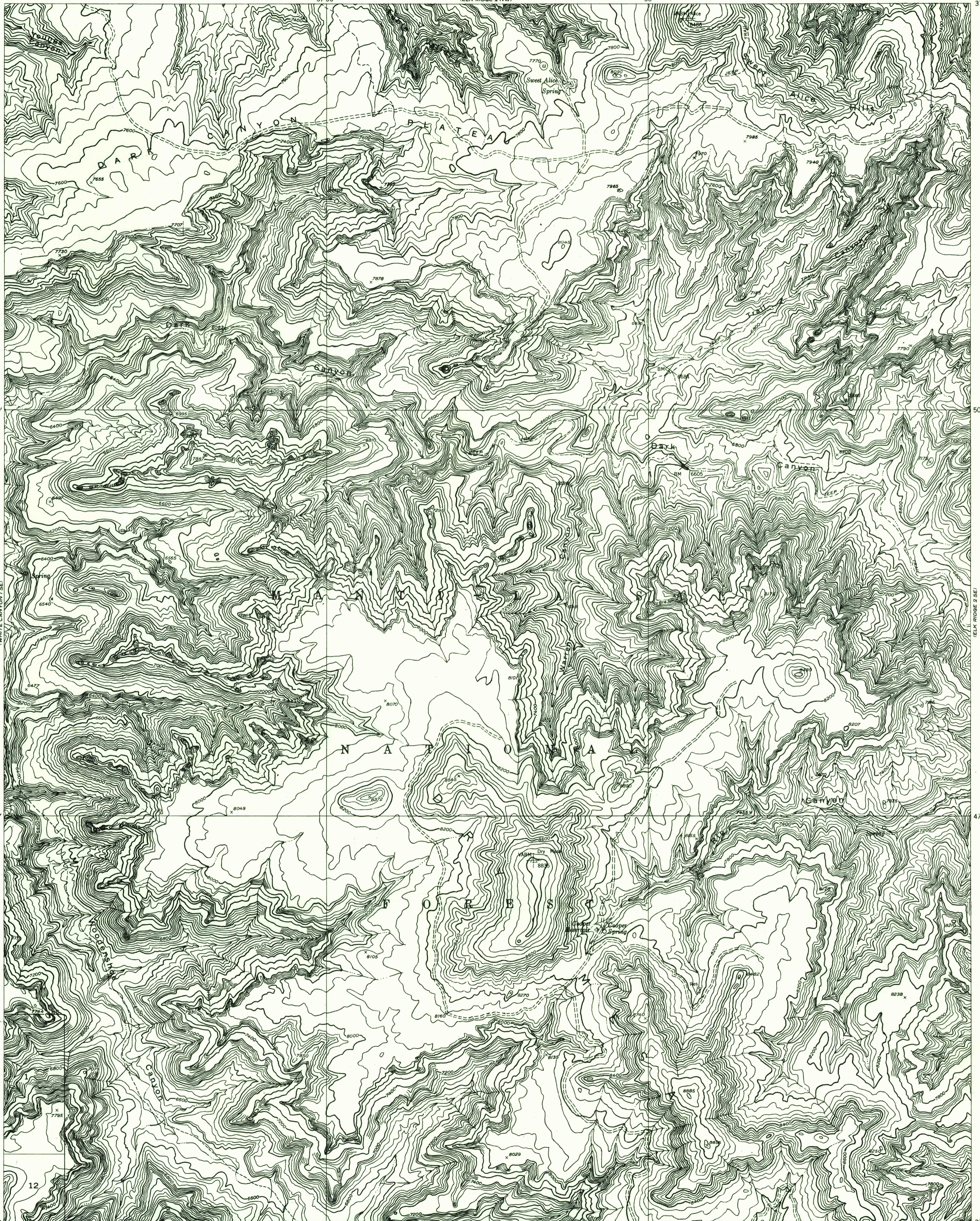


110°00' 37°52'30" 57°30' (ELK RIDGE 2 NW) 55' 109°52'30" 37°52'30"

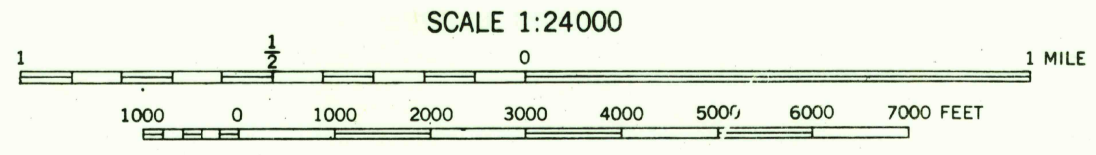
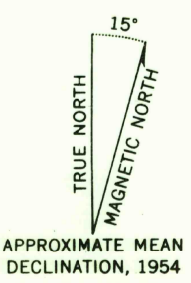
U.S.G.S.
FILE COPY
TOPOGRAPHIC DIVISION



U.S.G.S.
FILE COPY
TOPOGRAPHIC DIVISION

37°45' 110°00' R. 17 E. INTERIOR—GEOLOGICAL SURVEY, WASHINGTON, D. C.—1955 57°30' (ELK RIDGE 3 NW) 55' 37°45' 109°52'30"

Mapped by the Geological Survey 1954
Topography by multiplex methods from
aerial photographs taken 1952



SCALE 1:24000

CONTOUR INTERVAL 40 FEET
DATUM IS MEAN SEA LEVEL

USGS
HISTORICAL FILE
TOPOGRAPHIC DIVISION

ROAD CLASSIFICATION
Improved ——— Unimproved - - - - -

ELK RIDGE 2 SW, UTAH
37°45'—W109°52.5/7.5