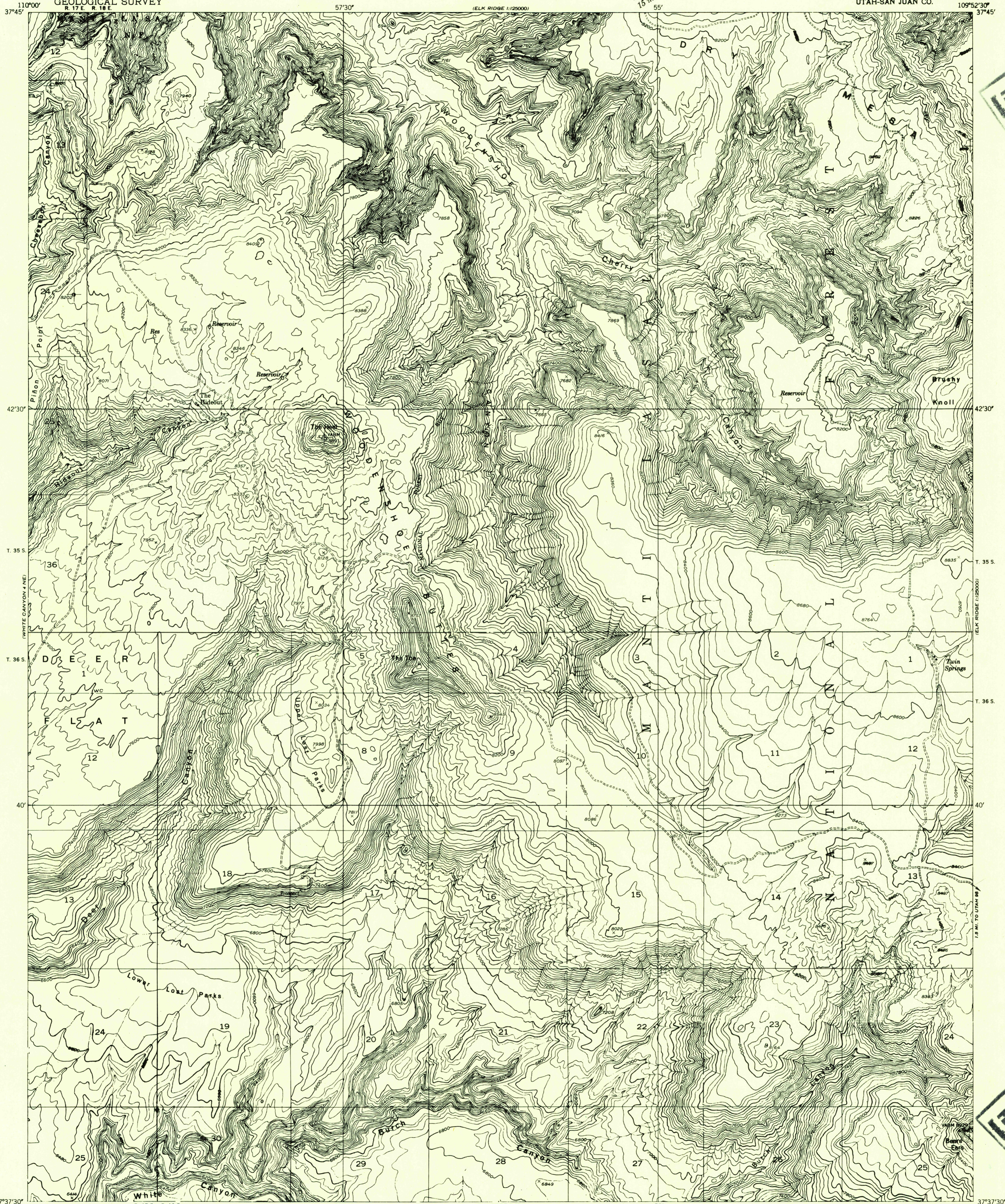


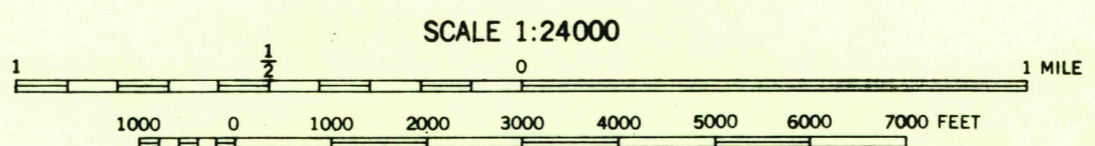
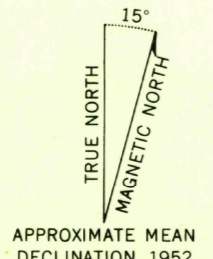
Preliminary edition
Pending completion of 1:62,500 scale
15 minute maps covering this area



FILE COPY
Map and Index

FILE COPY
Map and Index

Map by the Geological Survey 1952
Topography by multiplex methods from
aerial photographs taken 1951



USGS
HISTORICAL FILE
TOPOGRAPHIC DIVISION

ROAD CLASSIFICATION
Improved ——— Unimproved - - - - -

CONTOUR INTERVAL 40 FEET
DATUM IS MEAN SEA LEVEL

ELK RIDGE 3 NW, UTAH
N3737.5-W10952.5/7.5

JUN 24 1954

2050