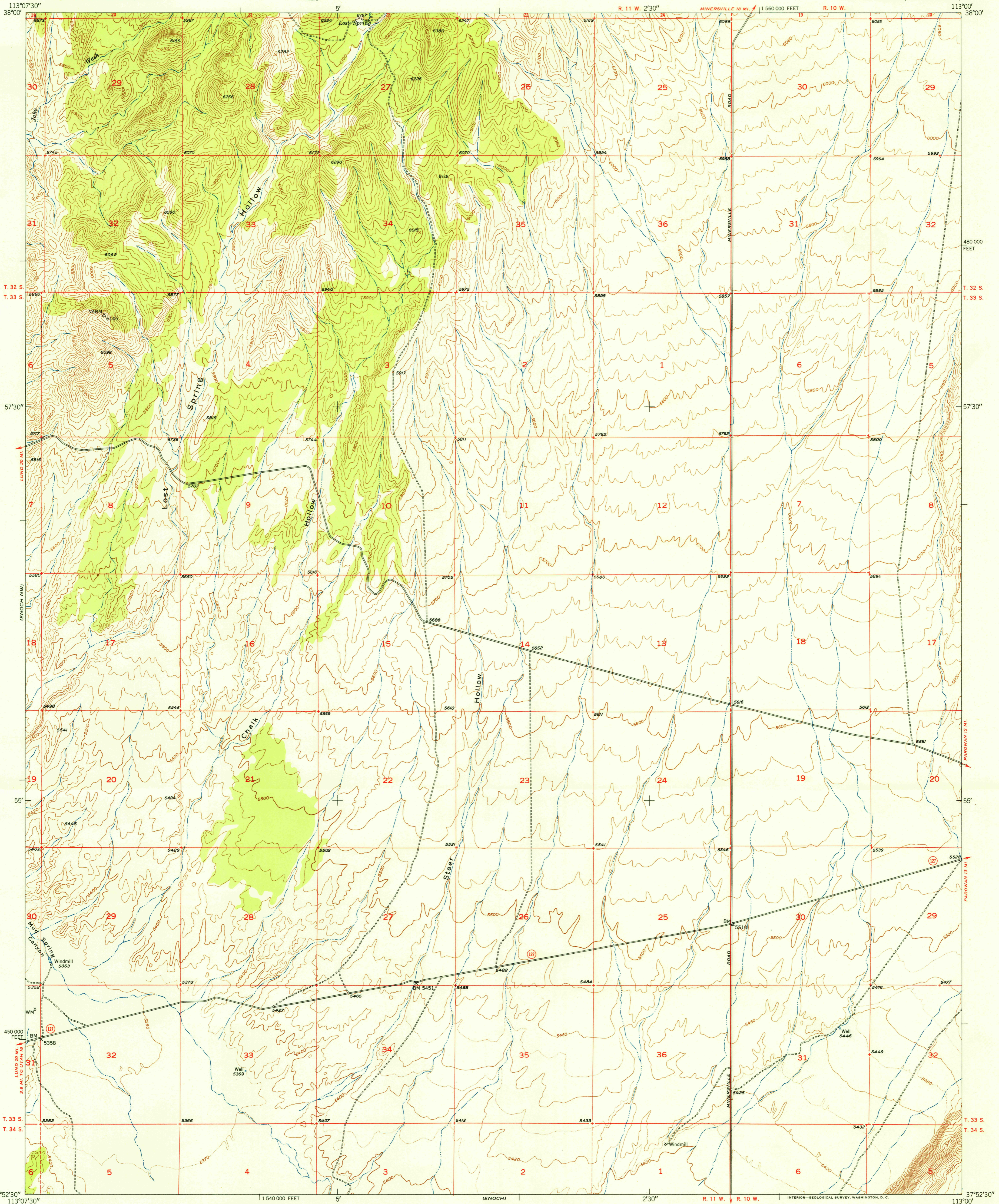
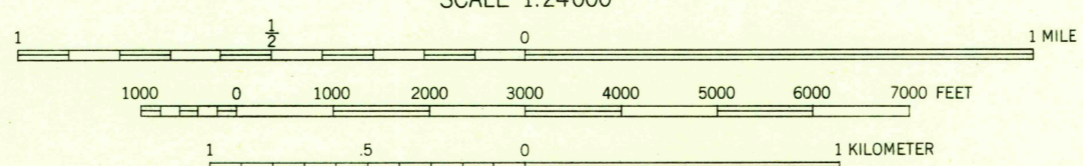
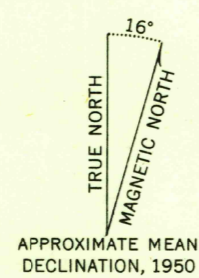


U. S. G. S.
FILE COPY
Inspection and Editing.



Mapped, edited, and published by the Geological Survey
Control by USGS and USC&GS
Topography from aerial photographs by multiplex methods,
and by plane-table surveys 1950
Aerial photographs taken 1948
Polyconic projection. 1927 North American datum
10,000-foot grid based on Utah coordinate system,
south zone
Dashed land lines indicate approximate location



CONTOUR INTERVAL 20 FEET
DOTTED LINES REPRESENT HALF-INTERVAL CONTOURS
DATUM IS MEAN SEA LEVEL

USGS
HISTORICAL FILE
TOPOGRAPHIC DIVISION

ROAD CLASSIFICATION
Heavy-duty 4 LANE IS LANE Light-duty
Medium-duty 4 LANE IS LANE Unimproved dirt
U. S. Route State Route

U. S. G. S.
FILE COPY
Inspection and Editing.

ENOCH NE, UTAH
N3752.5-W11300/7.5
EDITION OF 1952

THIS MAP COMPLIES WITH NATIONAL MAP ACCURACY STANDARDS
FOR SALE BY U. S. GEOLOGICAL SURVEY, FEDERAL CENTER, DENVER, COLORADO OR WASHINGTON 25, D. C.
A FOLDER DESCRIBING TOPOGRAPHIC MAPS AND SYMBOLS IS AVAILABLE ON REQUEST

MAR 3 1952 2145