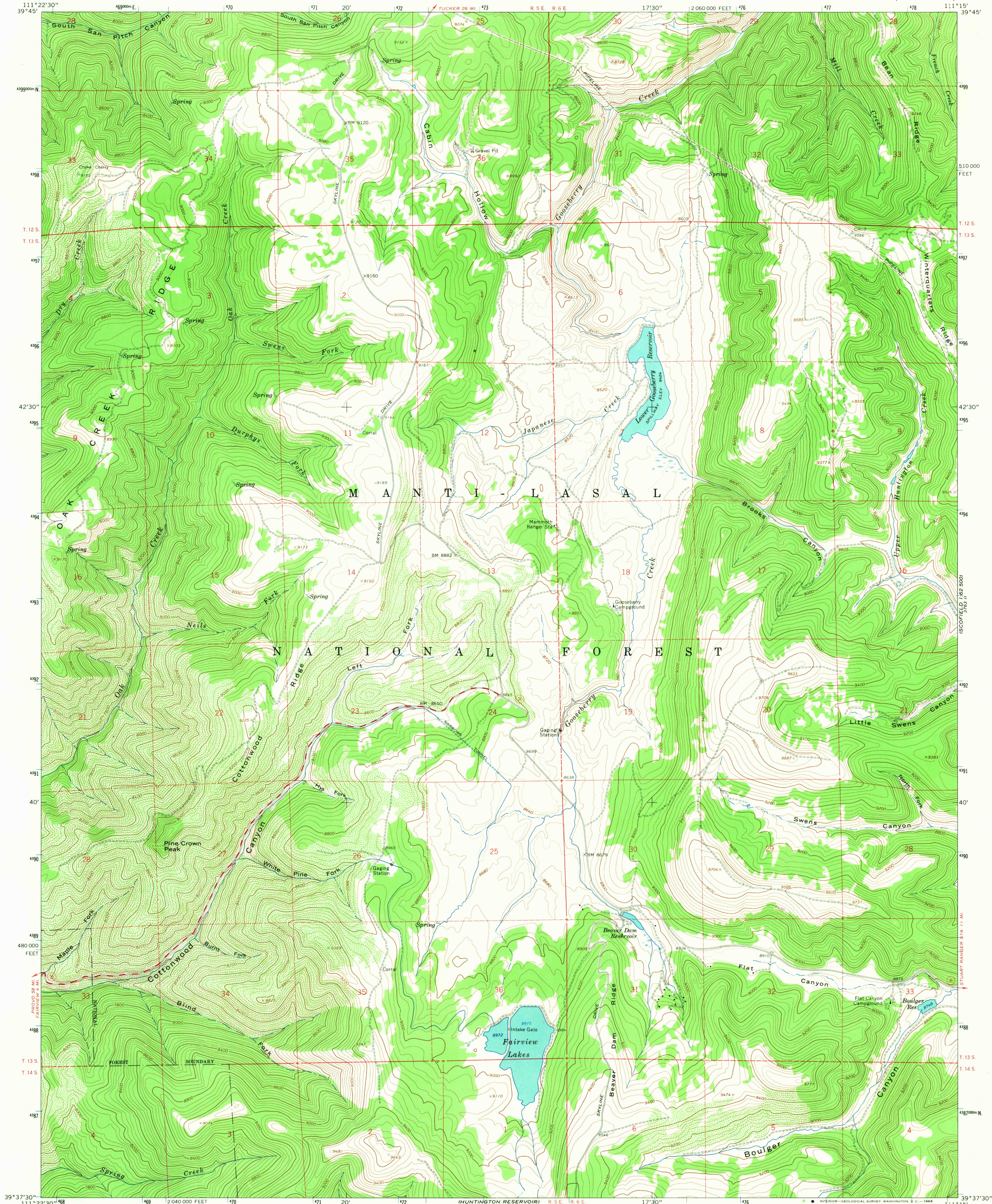
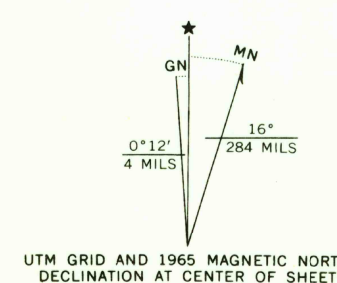


3763 I IUMM17  
ISOLD DLR  
162 200



Mapped, edited, and published by the Geological Survey  
Control by USGS and USC&GS  
Topography by photogrammetric methods from aerial  
photographs taken 1963. Field checked 1965  
Polyconic projection. 1927 North American datum  
10,000-foot grid based on Utah coordinate system, central zone  
1000-meter Universal Transverse Mercator grid ticks,  
zone 12, shown in blue



CONTOUR INTERVAL 40 FEET  
DOTTED LINES REPRESENT 20-FOOT CONTOURS  
DATUM IS MEAN SEA LEVEL

USGS  
HISTORICAL FILE  
TOPOGRAPHIC DIVISION

U.S.G.S.  
FILE COPY  
TOPOGRAPHIC DIVISION

ROAD CLASSIFICATION  
Medium-duty — Light-duty  
Unimproved dirt  
State Route

THIS MAP COMPLIES WITH NATIONAL MAP ACCURACY STANDARDS  
FOR SALE BY U. S. GEOLOGICAL SURVEY, DENVER, COLORADO 80225, OR WASHINGTON, D. C. 20242  
A FOLDER DESCRIBING TOPOGRAPHIC MAPS AND SYMBOLS IS AVAILABLE ON REQUEST

FAIRVIEW LAKES, UTAH  
N 3937.5—W 11115.75  
1965

AMS 3763 III NE—SERIES V897

3200  
NOV 15 1968