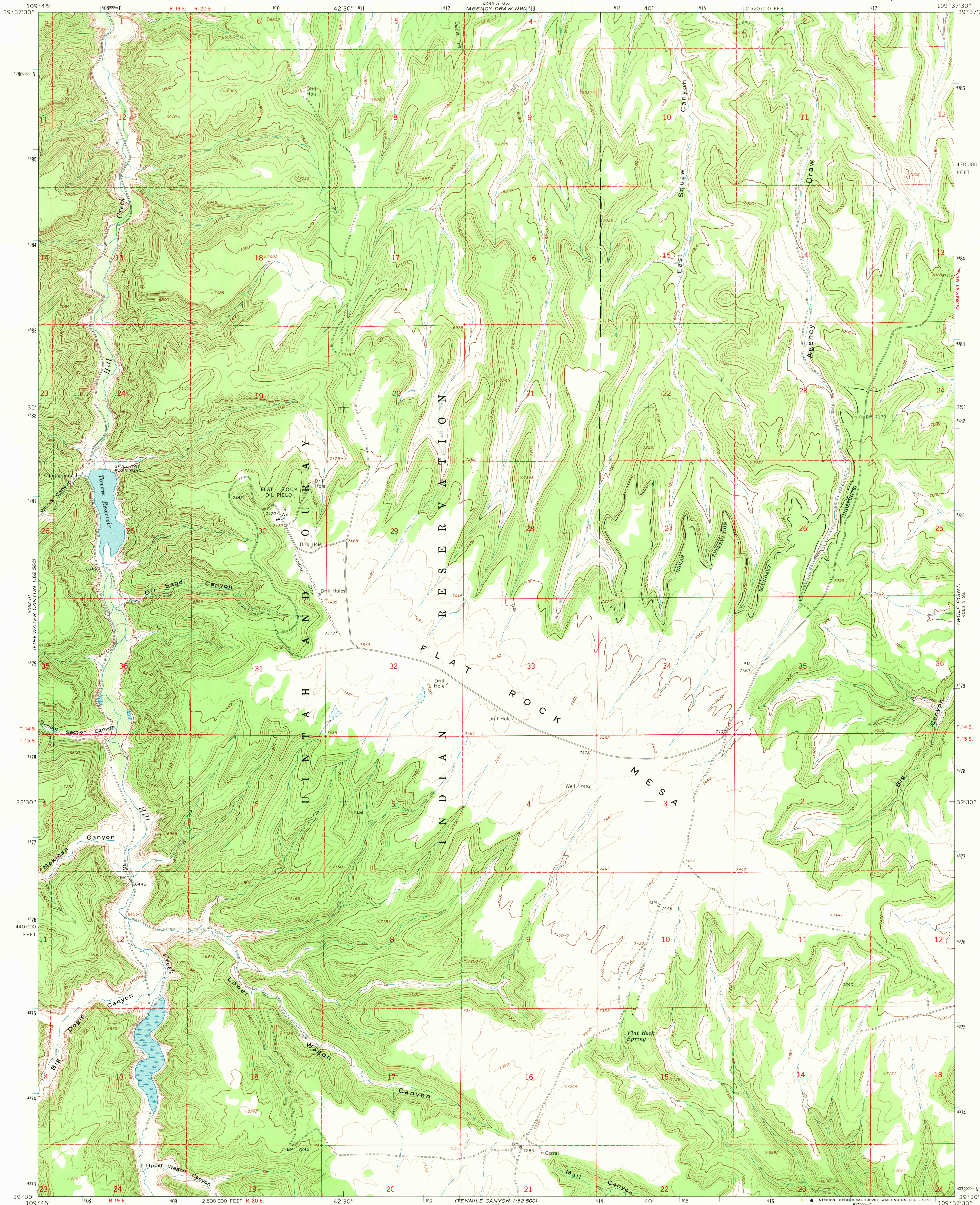
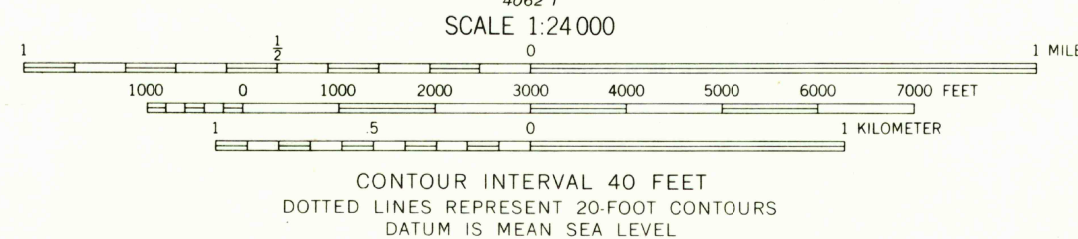
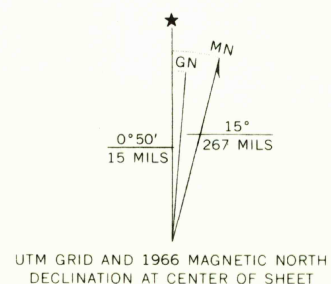


UNITED STATES  
DEPARTMENT OF THE INTERIOR  
GEOLOGICAL SURVEY

FLAT ROCK MESA QUADRANGLE  
UTAH—UINTAH CO.  
7.5 MINUTE SERIES (TOPOGRAPHIC)



Mapped, edited, and published by the Geological Survey  
Control by USGS and USC&GS  
Topography by photogrammetric methods from aerial  
photographs taken 1965. Field checked 1966  
Polyconic projection, 1927 North American datum  
10,000-foot grid based on Utah coordinate system, central zone  
1000-meter Universal Transverse Mercator grid ticks,  
zone 12, shown in blue  
Fine red dashed lines indicate selected fence lines



USGS  
HISTORICAL FILE  
TOPOGRAPHIC DIVISION



ROAD CLASSIFICATION  
Light duty ————— Unimproved dirt - - - - -

U.S.G.S. FILE COPY  
TOPOGRAPHIC DIVISION  
FLAT ROCK MESA, UTAH  
N3930—W10937.5/7.5  
1966  
UTAH 4063 II SW—SERIES B897

THIS MAP COMPLIES WITH NATIONAL MAP ACCURACY STANDARDS  
FOR SALE BY U.S. GEOLOGICAL SURVEY, DENVER, COLORADO 80225, OR WASHINGTON, D. C. 20242  
A FOLDER DESCRIBING TOPOGRAPHIC MAPS AND SYMBOLS IS AVAILABLE ON REQUEST

AUG 25 1970