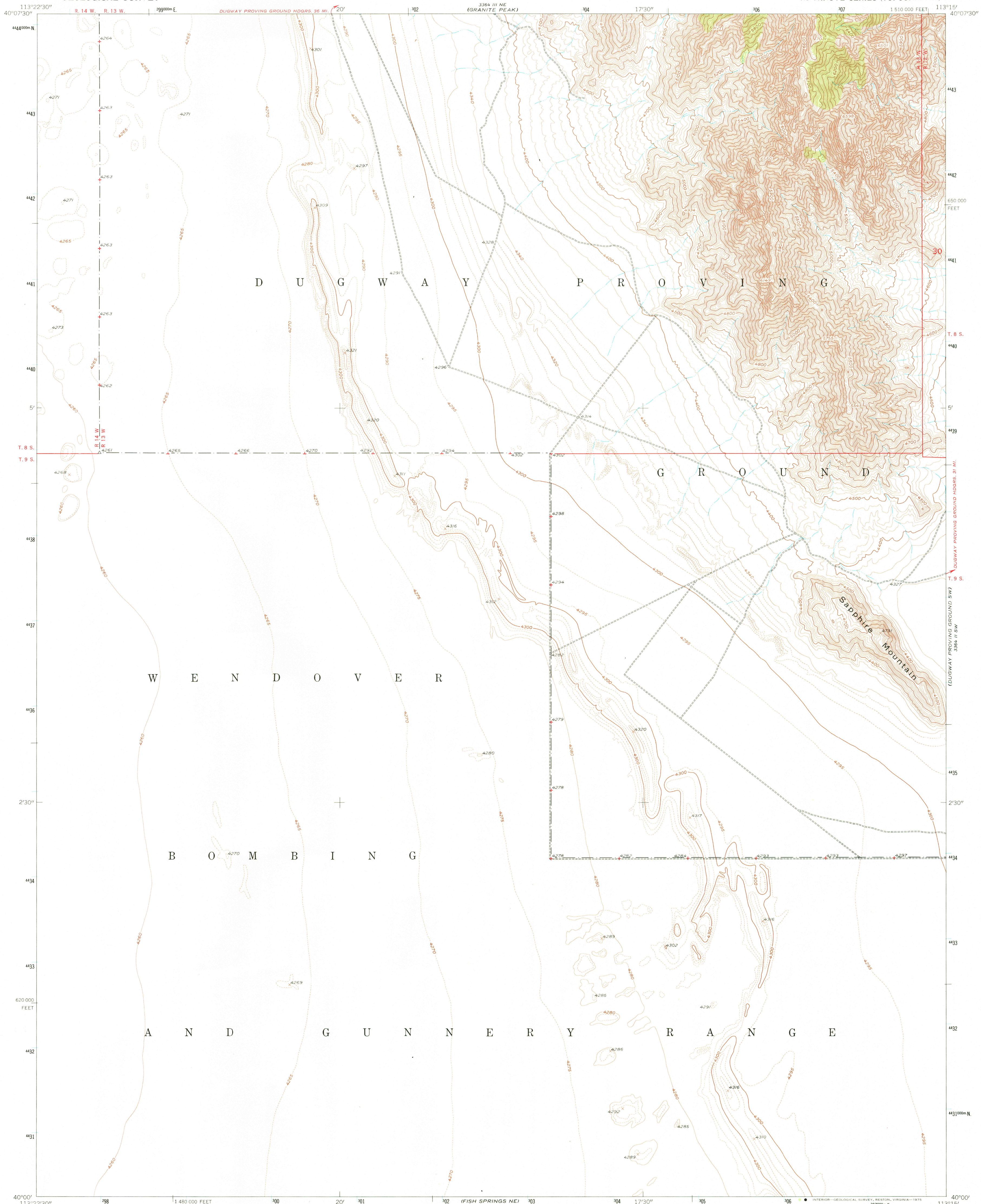
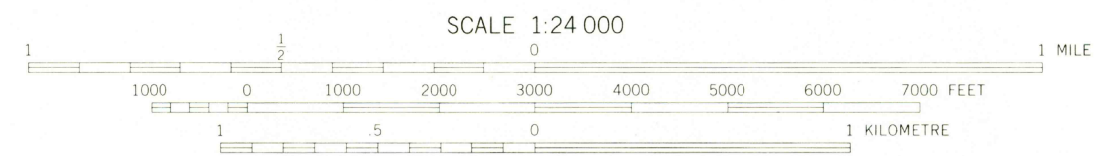
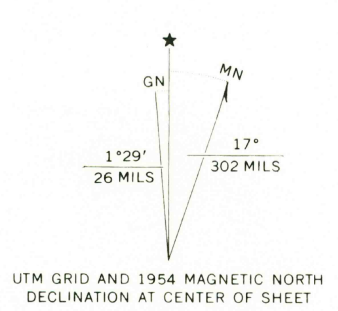


336 III NW
(DUGWAY PROVING GROUND NW)



Mapped, edited, and published by the Geological Survey
Control by USGS and USC&GS
Topography from aerial photographs by multiplex methods
and by planetable surveys 1954. Aerial photographs taken 1953
Polyconic projection. 1927 North American datum
10,000-foot grid based on Utah coordinate system, central zone
Dashed land lines indicate approximate locations
Unchecked elevations are shown in brown
1000-metre Universal Transverse Mercator grid ticks,
zone 12, shown in blue



SCALE 1:24 000
CONTOUR INTERVAL 20 FEET
DASHED LINES REPRESENT 5-FOOT CONTOURS
NATIONAL GEODETIC VERTICAL DATUM OF 1929



ROAD CLASSIFICATION

Heavy-duty	Light-duty
Medium-duty	Unimproved dirt
U.S. Route	State Route

THIS MAP COMPLIES WITH NATIONAL MAP ACCURACY STANDARDS
FOR SALE BY U. S. GEOLOGICAL SURVEY, DENVER, COLORADO 80225, OR RESTON, VIRGINIA 22092
A FOLDER DESCRIBING TOPOGRAPHIC MAPS AND SYMBOLS IS AVAILABLE ON REQUEST

USGS
Historical File
Topographic Division

GRANITE PEAK SE, UTAH
N 4000—W 11315/7.5
1954
AMS 3564 III SE—SERIES V897

1650

336 III NW
(DUGWAY RANGE NW)