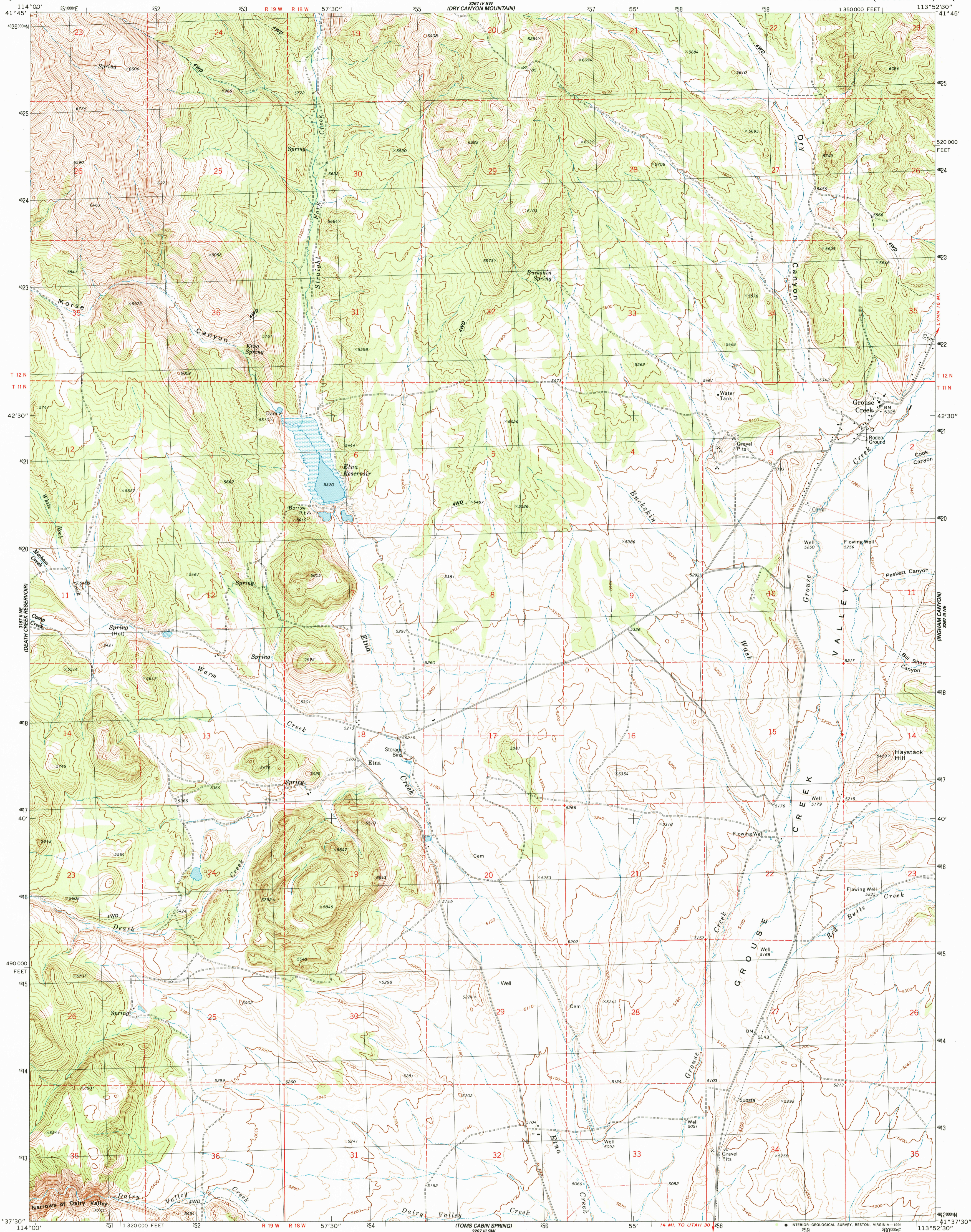


UNITED STATES
DEPARTMENT OF THE INTERIOR
GEOLOGICAL SURVEY

GROUSE CREEK QUADRANGLE
UTAH—BOX ELDER CO.
7.5 MINUTE SERIES (TOPOGRAPHIC)



Produced by the United States Geological Survey
Control by USGS and NOS/NOAA

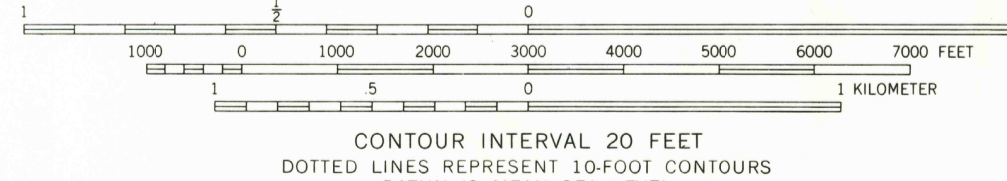
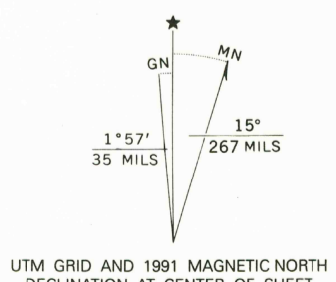
Compiled from aerial photographs taken 1968. Revised from aerial photographs taken 1987. Field checked 1990. Map edited 1991

North American Datum of 1927 (NAD 27). Projection and 10 000-foot grid ticks: Utah Coordinate System, north zone (Lambert Conformal Conic). 1000-meter Universal Transverse Mercator grid, zone 12

The difference between NAD 27 and North American Datum of 1983 (NAD 83) for 7.5 minute intersections is given in USGS Bulletin 1875. The NAD 83 is shown by dashed corner ticks

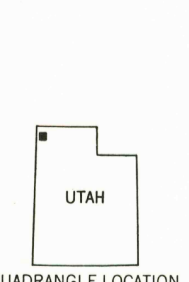
Areas covered by light-blue pattern are subject to controlled inundation

Fine red dashed lines indicate selected fence lines



CONTOUR INTERVAL 20 FEET
DOTTED LINES REPRESENT 10-FOOT CONTOURS
DATUM IS MEAN SEA LEVEL

THIS MAP COMPLIES WITH NATIONAL MAP ACCURACY STANDARDS
FOR SALE BY U.S. GEOLOGICAL SURVEY
DENVER, COLORADO 80225, OR RESTON, VIRGINIA 22092
A FOLDER DESCRIBING TOPOGRAPHIC MAPS AND SYMBOLS IS AVAILABLE ON REQUEST



ROAD CLASSIFICATION

Primary highway, hard surface	Light-duty road, hard or improved surface
Secondary highway, hard surface	Unimproved road
Interstate Route	U. S. Route
	State Route

MAR 1992 GROUSE CREEK, UTAH
41113-F8-TF-024

1991

DMA 3267 III NW-SERIES V897