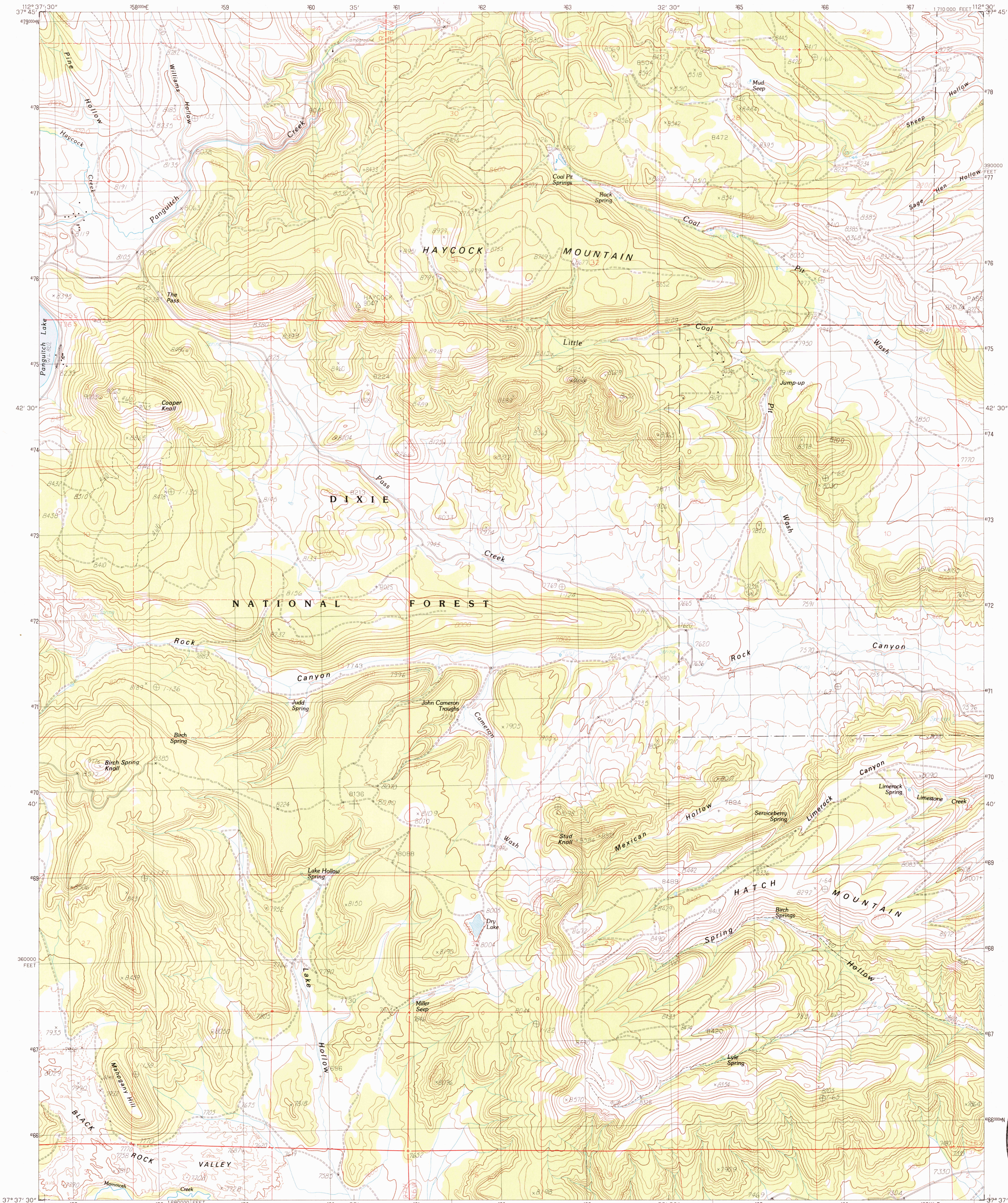


UNITED STATES
DEPARTMENT OF THE INTERIOR
GEOLOGICAL SURVEY

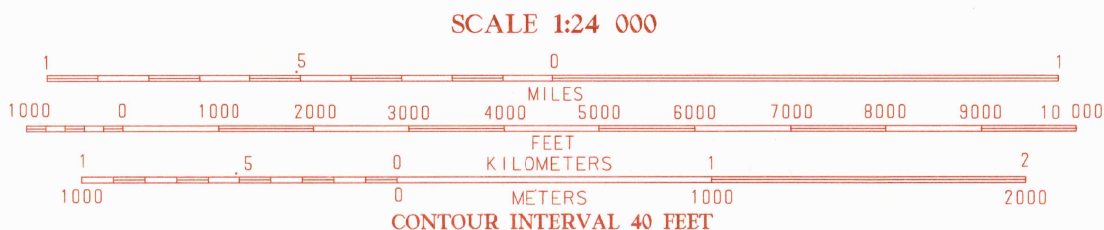
HAYCOCK MOUNTAIN QUADRANGLE
UTAH-GARFIELD CO.
7.5 MINUTE SERIES (TOPOGRAPHIC)



USGS NMD RESEARCH
NOV 27 1985
REFERENCE COLLECTION

PRODUCED BY THE UNITED STATES GEOLOGICAL SURVEY
CONTROL BY USGS NGS/NOAA
COMPILED FROM AERIAL PHOTOGRAPHS TAKEN 1976
FIELD CHECKED 1980 MAP EDITED 1985
PROJECTION LAMBERT CONFORMAL CONIC
GRID: 1000-METER UNIVERSAL TRANSVERSE MERCATOR ZONE 12
1000-FOOT STATE GRID TICKS UTAH, SOUTH ZONE
UTM GRID DECLINATION 0°57' WEST
1985 MAGNETIC NORTH DECLINATION 14° EAST
VERTICAL DATUM NATIONAL GEODETIC VERTICAL DATUM OF 1929
HORIZONTAL DATUM 1927 NORTH AMERICAN DATUM
To place on the predicted North American Datum of 1983,
move the projection lines as shown by dashed corner ticks
(6 meters north and 67 meters east)
There may be private inholdings within the boundaries of any
Federal and State Reservations shown on this map
All marginal data and lettering generated and positioned by
automated type placement procedures

PROVISIONAL MAP
Produced from original
manuscript drawings. Infor-
mation shown as of date of
field check. 2



QUADRANGLE LOCATION							
1	2	3	4	5	6	7	8
1 Red Creek Reservoir	2 Panguitch	3 Panguitch Lake	4 Hatch	5 Hatch	6 Hatch	7 Hatch	8 Hatch
9 Hatch	10 Hatch	11 Hatch	12 Hatch	13 Hatch	14 Hatch	15 Hatch	16 Hatch
17 Hatch	18 Hatch	19 Hatch	20 Hatch	21 Hatch	22 Hatch	23 Hatch	24 Hatch

ROAD LEGEND
Improved Road
Unimproved Road
Trail
Interstate Route U.S. Route State Route

HAYCOCK MOUNTAIN, UTAH
PROVISIONAL EDITION 1985

3712-F5-TF-024

THIS MAP COMPLIES WITH NATIONAL MAP ACCURACY STANDARDS
FOR SALE BY U.S. GEOLOGICAL SURVEY, DENVER, COLORADO 80225
OR RESTON, VIRGINIA 22092

ADJOINING 7.5 QUADRANGLE NAMES