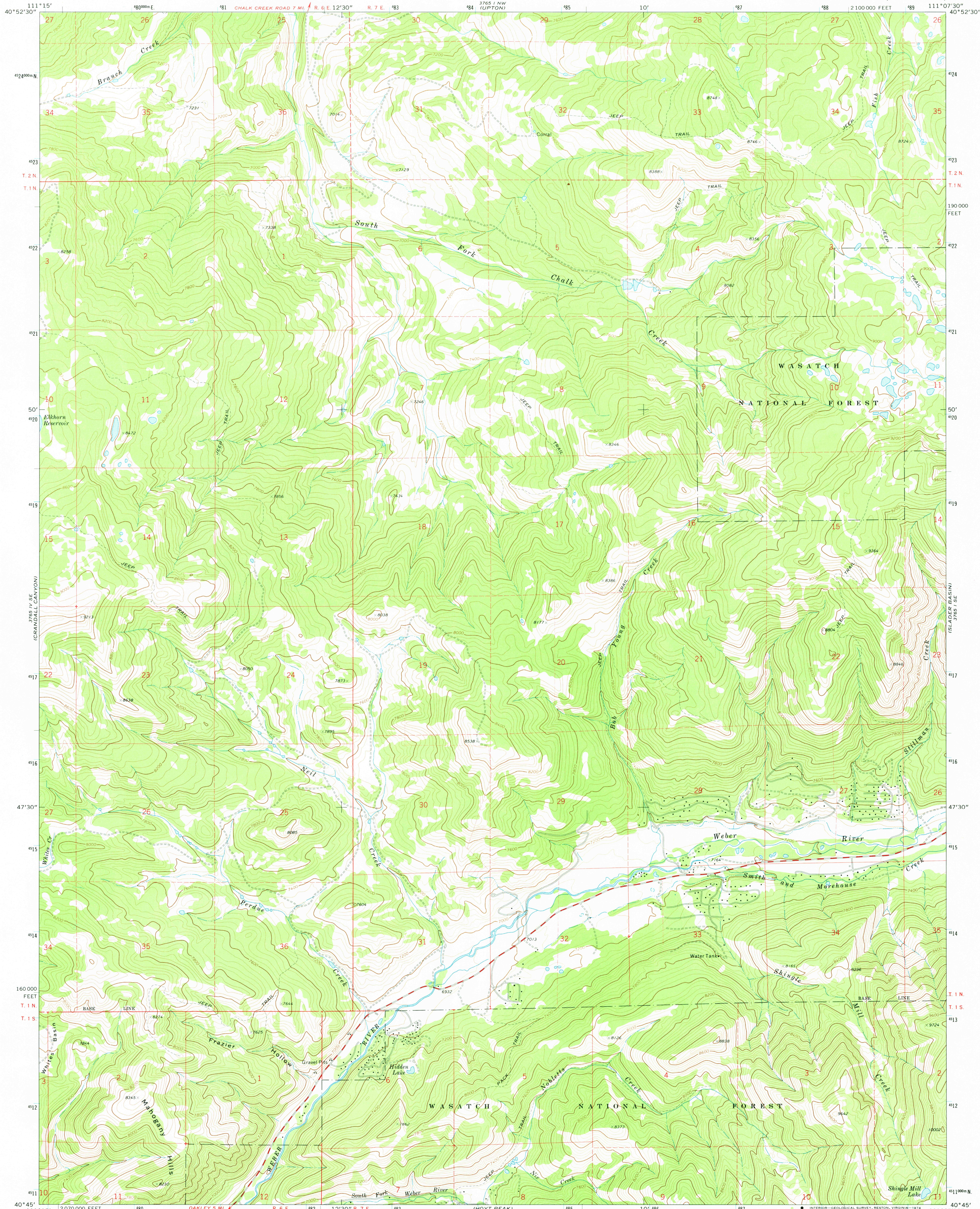
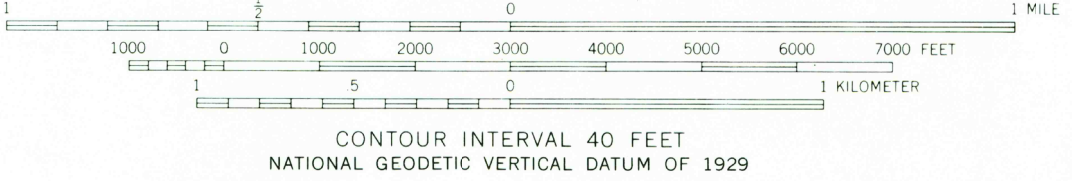
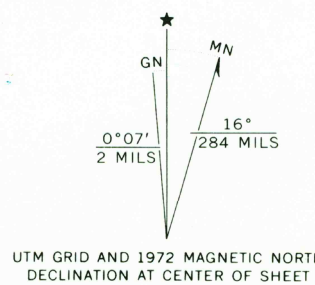


UNITED STATES
DEPARTMENT OF THE INTERIOR
GEOLOGICAL SURVEY

HIDDEN LAKE QUADRANGLE
UTAH—SUMMIT CO.
7.5 MINUTE SERIES (TOPOGRAPHIC)



Mapped by the U. S. Forest Service
Edited and published by the Geological Survey
Control by USGS, USC&GS, and U. S. Forest Service
Topography by photogrammetric methods from aerial
photographs taken 1967. Field checked by USGS 1972.
Projection and 10,000-foot grid ticks: Utah
coordinate system, north zone (Lambert conformal conic)
1000-meter Universal Transverse Mercator grid ticks,
zone 12, shown in blue. 1927 North American datum
Fine red dashed lines indicate selected fence lines



ROAD CLASSIFICATION
Primary highway, hard surface ————
Secondary highway, hard surface ————
Unimproved road ————
Interstate Route ————
U. S. Route ————
State Route ————

THIS MAP COMPLIES WITH NATIONAL MAP ACCURACY STANDARDS
FOR SALE BY U.S. GEOLOGICAL SURVEY, DENVER, COLORADO 80225 OR RESTON, VIRGINIA 22092
A FOLDER DESCRIBING TOPOGRAPHIC MAPS AND SYMBOLS IS AVAILABLE ON REQUEST

USGS
Historical File
Topographic Division

HIDDEN LAKE, UTAH
N4045—W11107.5/7.5
1972
AMS 3765 I SW—SERIES V897

DEC 0 2 1974