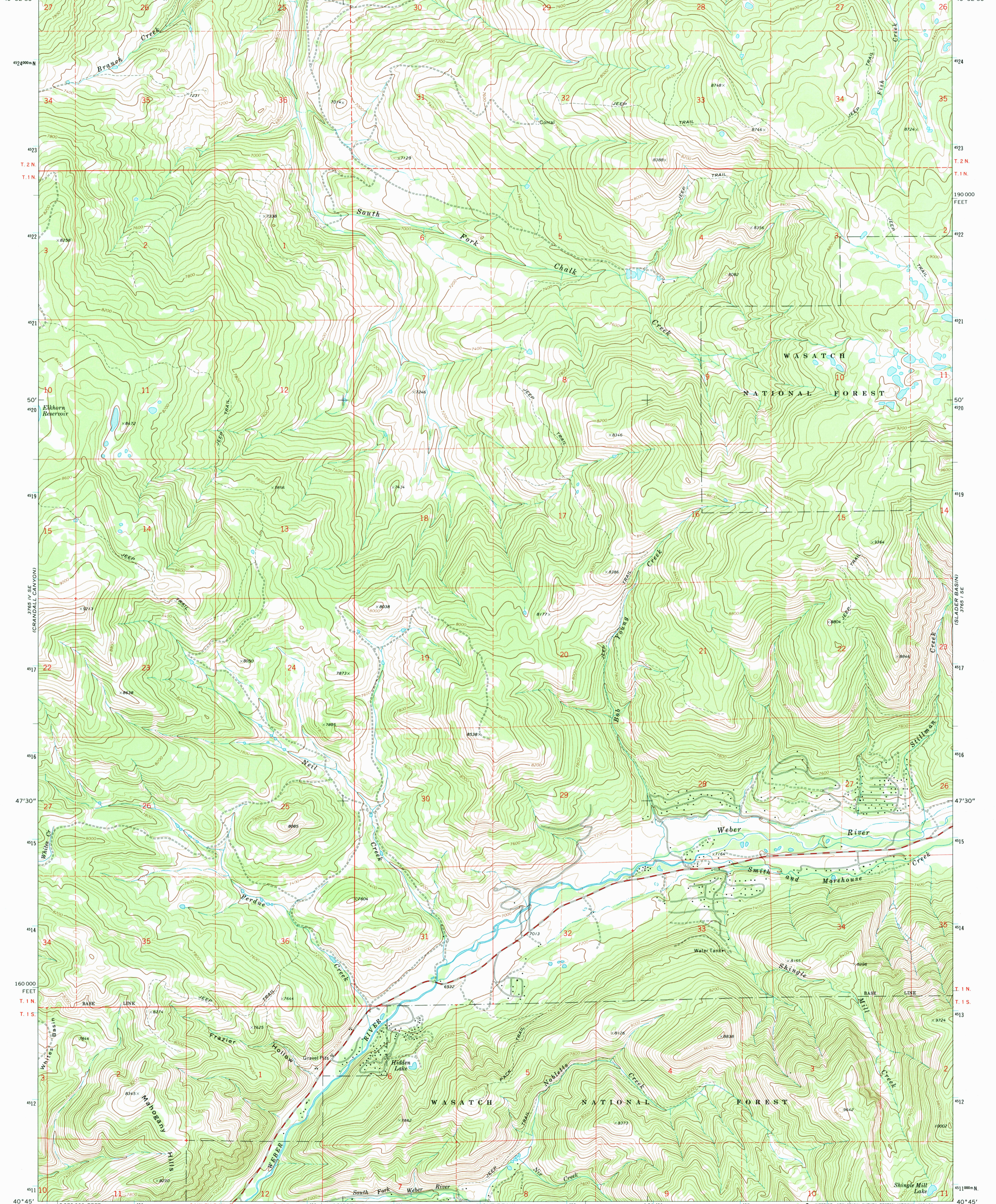
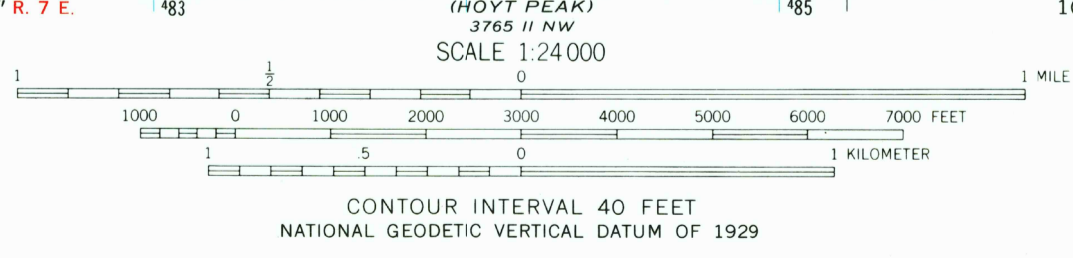
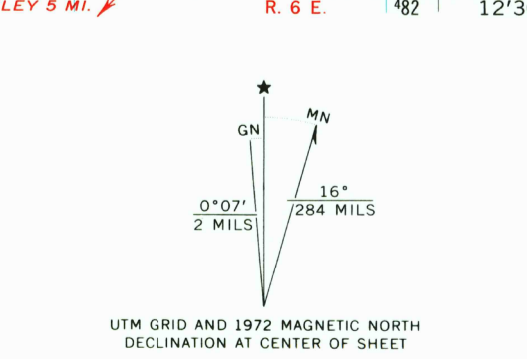


111°15' 180°0000 E. 481 CHALK CREEK ROAD 7 MI. R. 6 E. 12°30' R. 7 E. 483 3765 I NW (UPTON) 485 10' 487 488 2100000 FEET 489 111°07'30" 40°52'30"



Turner Hollow
3765 I NE
3765 I SE
3765 I NW
3765 I SW

Maped by the U. S. Forest Service
Edited and published by the Geological Survey
Control by USGS, USCO&GS, and U. S. Forest Service
Topography by photogrammetric methods from aerial photographs taken 1967. Field checked by USGS 1972.
Projection and 10,000-foot grid ticks: Utah coordinate system, north zone (Lambert conformal conic)
1000-meter Universal Transverse Mercator grid ticks, zone 12, shown in blue. 1927 North American datum
Fine red dashed lines indicate selected fence lines



ROAD CLASSIFICATION
Primary highway, hard surface
Secondary highway, hard surface
Interstate Route
U. S. Route
Light-duty road, hard or improved surface
Unimproved road
State Route

UTAH
QUADRANGLE LOCATION

USGS AND HISTORICAL MAP ARCHIVES
REC'D FILE COPY

HIDDEN LAKE, UTAH
N4045—W11107.5/7.5
1972
AMS 3765 I SW—SERIES V897

THIS MAP COMPLIES WITH NATIONAL MAP ACCURACY STANDARDS
FOR SALE BY U.S. GEOLOGICAL SURVEY, DENVER, COLORADO 80225, OR RESTON, VIRGINIA 22092
A FOLDER DESCRIBING TOPOGRAPHIC MAPS AND SYMBOLS IS AVAILABLE ON REQUEST

28 JUL 1995

