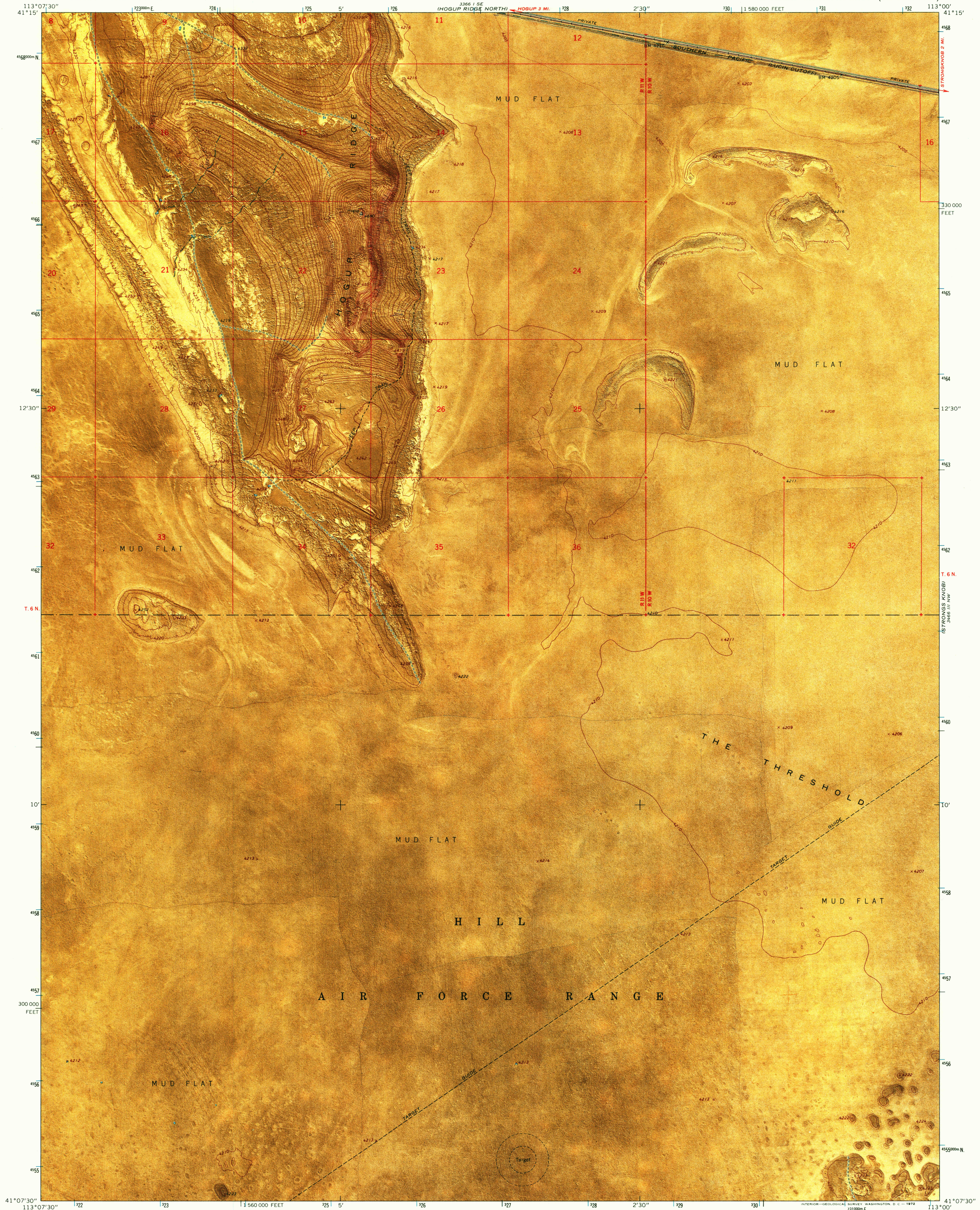
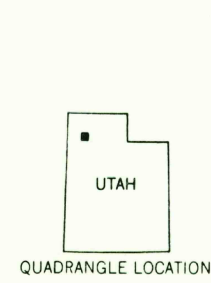
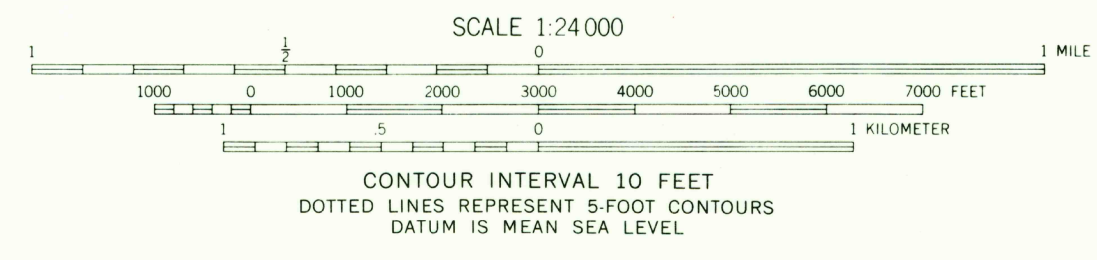
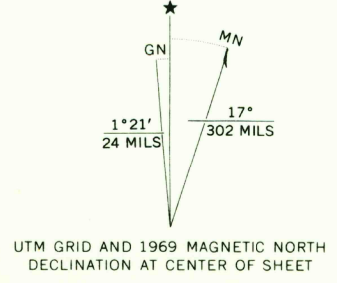


3466 IV SW
IBUNNISON ISLAND SW



Mapped, edited, and published by the Geological Survey
Control by USGS and USC&GS
Topography by photogrammetric methods from aerial
photographs taken 1966. Orthophotomosaic from aerial
photographs taken 1969. Field checked 1969
Polyconic projection. 1927 North American datum
10,000-foot grid based on Utah coordinate system, north zone
1000-meter Universal Transverse Mercator grid ticks,
zone 12, shown in blue
Where omitted, land lines have not been established



ROAD CLASSIFICATION
Light-duty road, all weather, improved surface
Unimproved road, fair or dry weather

THIS MAP COMPLIES WITH NATIONAL MAP ACCURACY STANDARDS
FOR SALE BY U.S. GEOLOGICAL SURVEY, DENVER, COLORADO 80225, OR WASHINGTON, D.C. 20242
A FOLDER DESCRIBING TOPOGRAPHIC MAPS AND SYMBOLS IS AVAILABLE ON REQUEST

HOGUP RIDGE SOUTH, UTAH
N4107.5—W11300/7.5
1969
AMS 3366 II NE—SERIES V897

2550
MAR 14 1972
USGS
HISTORICAL FILE
TOPOGRAPHIC DIVISION