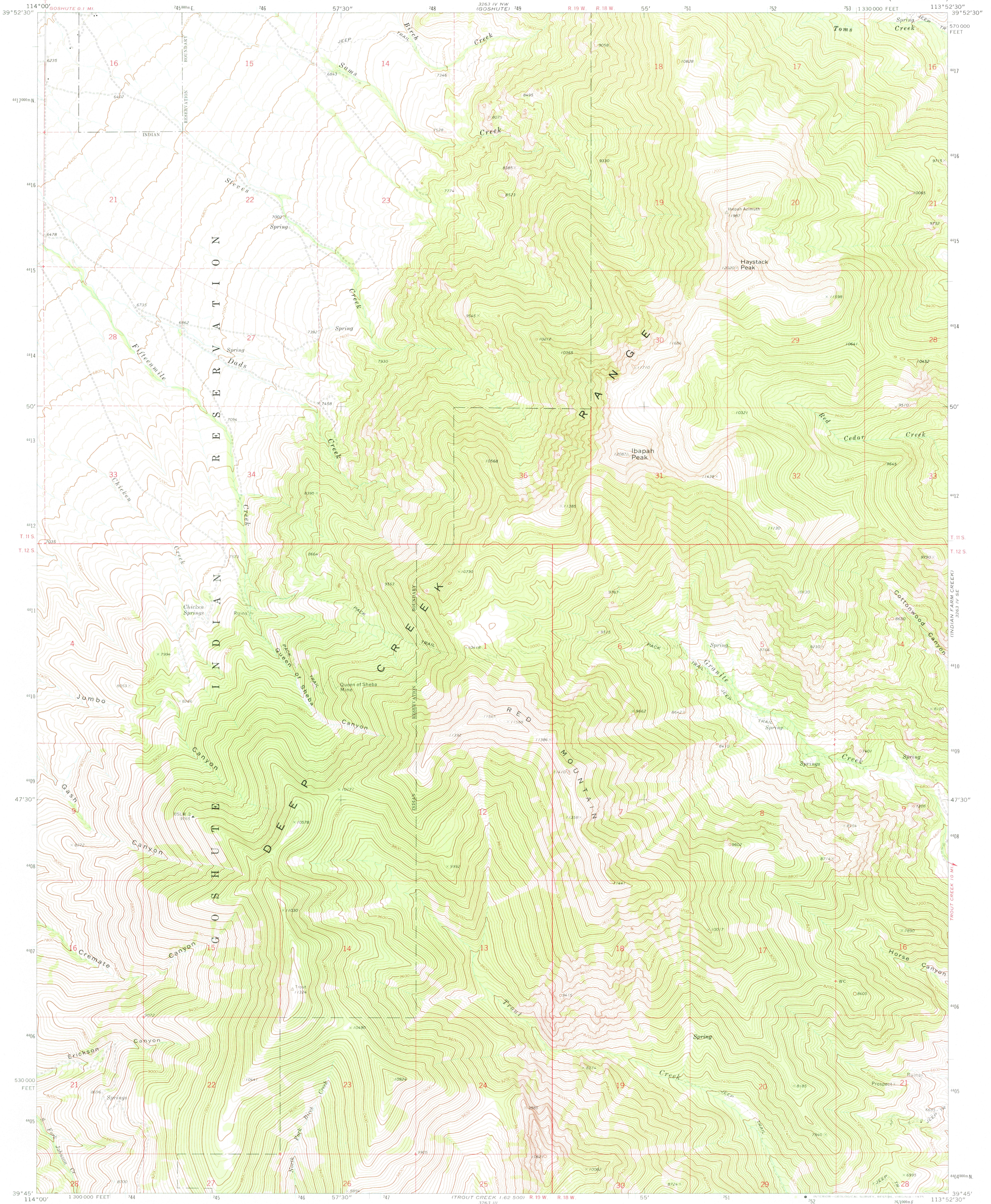
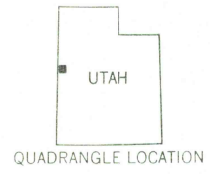
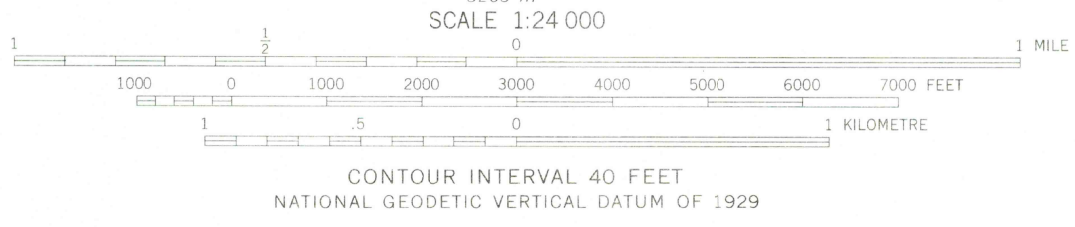
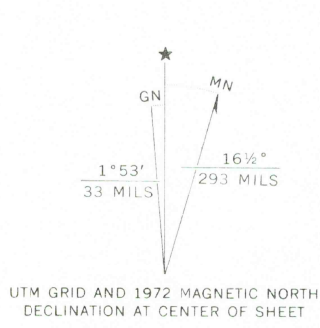


3263 IV NW  
(GOSHUTE CANYON)



Mapped, edited, and published by the Geological Survey  
Control by USGS and NOS/NOAA  
Topography by photogrammetric methods from aerial  
photographs taken 1970. Field checked 1972  
Projection and 10,000-foot grid ticks: Utah coordinate  
system, central zone (Lambert conformal conic)  
1000-metre Universal Transverse Mercator grid ticks,  
zone 12, shown in blue. 1927 North American datum  
Fine red dashed lines indicate selected fence lines  
Where omitted, land lines have not been established



ROAD CLASSIFICATION  
Primary highway, hard surface  
Secondary highway, hard surface  
Unimproved road  
Interstate Route  
U. S. Route  
State Route  
Light-duty road, hard or improved surface

THIS MAP COMPLIES WITH NATIONAL MAP ACCURACY STANDARDS  
FOR SALE BY U. S. GEOLOGICAL SURVEY, DENVER, COLORADO 80225 OR RESTON, VIRGINIA 22092  
A FOLDER DESCRIBING TOPOGRAPHIC MAPS AND SYMBOLS IS AVAILABLE ON REQUEST

USGS  
Historical File  
Topographic Division

IBAPAH PEAK, UTAH  
N3945-W11352.5/7.5

1972

AMS 3263 IV SW—SERIES V897

APR 14 1975

3263 IV NW  
(GOSHUTE CANYON)