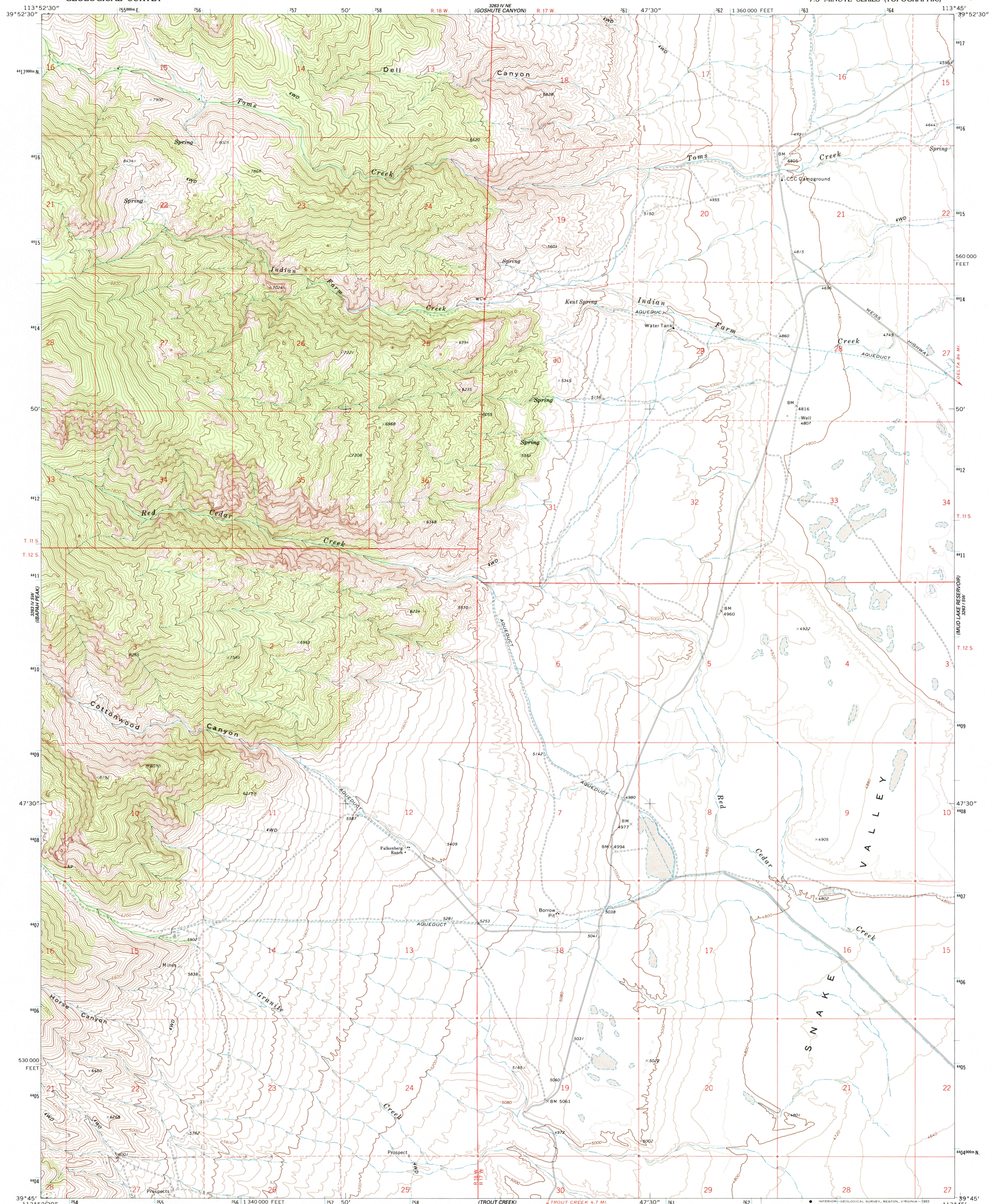


3263 IV NW  
GOSHUTE

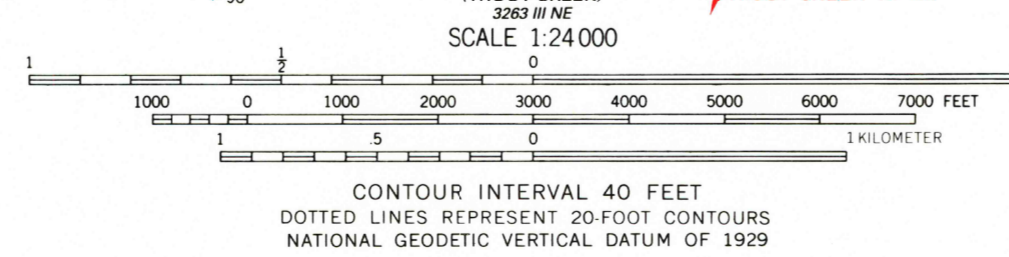
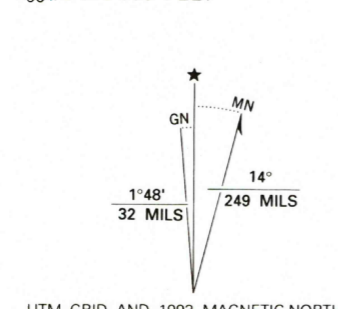
UNITED STATES  
DEPARTMENT OF THE INTERIOR  
GEOLOGICAL SURVEY

INDIAN FARM CREEK QUADRANGLE  
UTAH-JUAB CO.  
7.5 MINUTE SERIES (TOPOGRAPHIC)

3263 IV NE  
GALATI



Produced by the United States Geological Survey  
Control by USGS and NOS/NOAA  
Compiled from aerial photographs taken 1970  
Field checked 1972  
North American Datum of 1927 (NAD 27). Projection and  
10 000-foot grid ticks: Utah Coordinate System,  
central zone (Lambert Conformal Conic)  
1000-meter Universal Transverse Mercator grid ticks, zone 12  
shown in blue  
The difference between NAD 27 and North American Datum of  
1983 (NAD 83) for 7.5 minute intersections is given in USGS  
Bulletin 1875. The NAD 83 is shown by dashed corner ticks  
Fine red dashed lines indicate selected fence lines  
Photinspected from 1991 source; no major culture or  
drainage changes observed. Names verified 1993



ROAD CLASSIFICATION

|                                 |   |
|---------------------------------|---|
| Primary highway, hard surface   | Light-duty road, hard or improved surface |
| Secondary highway, hard surface | Unimproved road                           |
| Interstate Route                | U. S. Route                               |
|                                 | State Route                               |

THIS MAP COMPLIES WITH NATIONAL MAP ACCURACY STANDARDS  
FOR SALE BY U. S. GEOLOGICAL SURVEY, DENVER, COLORADO 80225, OR RESTON, VIRGINIA 22092  
A FOLDER DESCRIBING TOPOGRAPHIC MAPS AND SYMBOLS IS AVAILABLE ON REQUEST

INDIAN FARM CREEK, UTAH  
39113-G7-TF-024

1972  
MINOR REVISION 1993  
DMA 3263 IV SE-SERIES V897

